



**Abbey Caravans**  
**2004** Leaders in leisure



**YOUR 1<sup>ST</sup> CHOICE FOR  
MORE CHOICE**

- OVER 300 CARAVANS ON SHOW
- INDOOR & SEASONAL OUTDOOR CAMPING DISPLAY
- AWNING DISCOUNT CENTRE
- ACCESSORIES SUPERMARKET
- 5 STAR SERVICE CENTRE & REPAIR WORKSHOPS
- FINANCE & INSURANCE (SUBJECT TO STATUS)

**GUARANTEED A  
WARM WELCOME**

**HIGHBRIDGE**

Caravan and Camping Centre

**OPEN 7 DAYS  
A WEEK**



**01278 782725**

A38, BRISTOL RD, HIGHBRIDGE, SOMERSET, TA9 4EX  
[www.highbridgecaravans.co.uk](http://www.highbridgecaravans.co.uk)



# Abbey Caravans



All Abbey models have been certified by the National Caravan

Council for compliance with stringent European Standards, British Legislation and industry set Codes of Practice specifically relating to health and safety issues. The approval process covers the testing and inspection of critical areas of the product from fire safety, weights and dimensions, to gas, electrics and ventilation. Every Abbey caravan carries the "NCC Approved Caravan" badge. The NCC also conduct unannounced inspections at the Abbey factory to ensure continued compliance. NCC Approval gives you peace of mind that your caravan is legal and safe.

Bursting with design innovation and offering countless luxury features, the 2004 Abbey range of caravans is stylish, practical and outstanding value for money. As distinctive as ever, Abbey boasts 23 exciting model layouts across three stunning ranges, ensuring that every individual taste and requirement is met.

2004 sees an upgraded Aventura range and all-new GTS Vogue and Spectrum models. Increased specification, stylish, curved interior furniture, and new layouts make this the most desirable Abbey range ever.

Design practicality is high on the agenda as Abbey succeeds in delivering the ideal balance between form and function. Distinctive glacier white GRP (Glass Reinforced Plastic) front and rear panels are joined by one-piece GRP sidewalls on all models, making this impressive collection truly unique.

A stylish, durable and astonishingly tough alternative to aluminium, GRP offers a host of incredible advantages including improved qualities of impact and scratch resistance as well as distinctive good looks and a totally smooth gloss finish.

Customer satisfaction is of high priority and Abbey want to ensure your touring experience is enjoyable and trouble-free. Our aftersales service, SuperCare, is designed to achieve this, whilst SuperSure, a comprehensive manufacturer's 3 year warranty, provides reassurance and peace of mind.

Abbey has an active owners club, open to all purchasers of Abbey tourers. Full details can be found by logging onto [www.abbeycoc.co.uk](http://www.abbeycoc.co.uk)

## Aventura

Offering the ideal combination of style, specification and sophistication, the Aventura offers affordable accommodation for those who seek home from home comfort.

Displaying further enhancements for 2004, a glacier white GRP exterior shows off flamboyant graphics and stylish new Hella light clusters. A new spare wheel and tyre mounted on a convenient underslung carrier optimises storage space, whilst an AKS 2004 AI-ko stabiliser provides added stability for easy and relaxed towing.

This popular entry level caravan continues to offer a varied range of layouts, including two exciting new additions for 2004 - a six berth family layout and an L-shaped lounge model with fixed rear bed.

## GTS Vogue

This superior range has been totally redesigned inside and out to include a stunning array of luxurious and practical new features, all set within a selection of popular and inventive new layouts. A striking new graphics scheme adorns the sleek white exterior which also offers flush-fitting windows, innovative rear light clusters and styled wheel spats.

Brimming with new features, the interior offers a brand new look and a level of specification that's hard to beat. Two new layouts bring the total choice to ten outstanding models.

## Spectrum

The flagship of the Abbey range, the Spectrum leaps forward for 2004 with a classy, contemporary new look, and a whole host of new features.

An all-new white bodysell sports colourful new graphics and 14" alloy wheels, whilst the GRP back panel houses a distinctive rear light cluster formation. The high standards set by the Spectrum's exterior are easily matched by the elegance within, which provides a stylish, sumptuous, and relaxing environment.

With five innovative layouts enjoying the highest quality of fixtures and fittings, this versatile, elegant, twin-axle tourer offers a wide choice of models all striving to accommodate every need with supreme luxury and style.



# Aventura



Aventura 330

Enjoying a colourful combination of contemporary style and flair is the Aventura's stunning interior. Sumptuous Bilbao terracotta fabrics create a relaxing environment that is both stylish and comfortable.

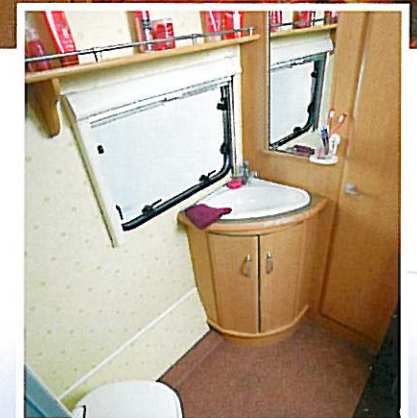


room to play

Aventura 318



Aventura 319



Aventura 315, 320, 325

Matching gold curtains on twin track with tie-backs and contrasting terracotta pelmets add to the classic Aventura look.

Worktops and tables have stylish rolled edged hardwood mouldings. This type of superior quality is carried through to the washroom where there is easy access to wardrobe shelving behind the hinged vanity mirror, and contemporary chrome fittings.







*peace and tranquillity*

The high quality equipment found in the Aventura takes all the stress out of day-to-day living, creating an atmosphere of relaxation and leisure. Superb new kitchen facilities include an electronic ignition dual fuel hob incorporated into the Belling gun metal grey thermostatic oven. Kitchen space is plentiful with convenient locker storage and a new recessed stainless steel bowl drainer and chrome finish domestic style pillar tap.



Aventura 318



Aventura 319



# GTS Vogue



GTS Vogue 415

New rich green and gold furnishings give the interior a sumptuous appeal and this is echoed by the stylish new curved Italian designed locker doors with contemporary new handles and paneling.



get to the heart of life



GTS Vogue 415



A variety of different washroom styles is now available in this new range, each carefully planned to optimise space, and offering newly-designed circular or square separate shower cubicles. Showing real attention to detail, the furniture has a stylish curved look throughout.

New centre washroom module with integral separate circular shower, GTS Vogue 418, 420, 516, 517







GTS Vogue 217

*live your free time to the full*

Interior designers have packed the GTS with thoughtful features, designed to make your holiday even more enjoyable. Cooking facilities have been upgraded with new sink design and improved storage, plus a superb new Belling dual fuel hob. A cocktail cabinet with framed smoked acrylic door and internal lighting adds to the sumptuous feel.



Optional microwave,  
GTS Vogue 216, 217



GTS Vogue 217



# Spectrum



Spectrum 419

Plush burgundy and rich gold fabrics create an opulent background in which to relax, and blend with the luxurious loose fit carpets. A combination of large and mini Heki rooflights give a light and airy atmosphere.



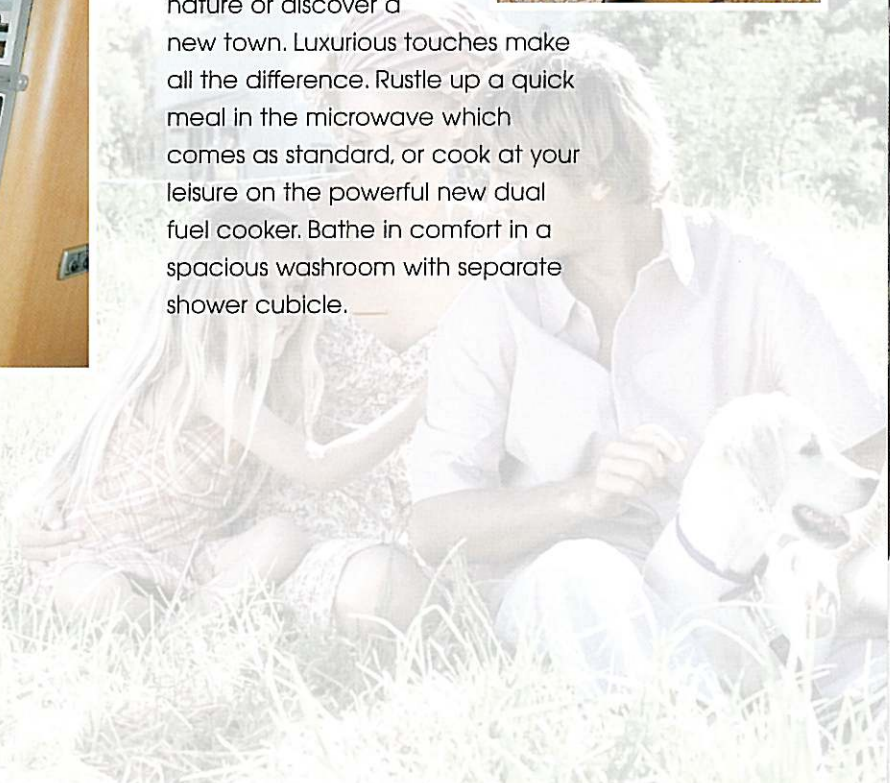
make weekends *an adventure*

Spectrum 419

The new Spectrum provides an ideal base for exploring your favourite parts of the world, whether you want to get closer to nature or discover a new town. Luxurious touches make all the difference. Rustle up a quick meal in the microwave which comes as standard, or cook at your leisure on the powerful new dual fuel cooker. Bathe in comfort in a spacious washroom with separate shower cubicle.



Spectrum 540







*break out of the usual routine*

The Spectrum offers superb accommodation that ensures you will have many fantastic holidays. Spacious curved wood lockers not only look good, but also offer an enormous amount of storage. Hinged bed tops open easily to reveal even more room for luggage and equipment, as well as providing a comfortable night's sleep.



Multi-position mini-heki clear skylight with blind and flyscreen





# Washrooms



GTS Vogue 216, 217

Top: GTS Vogue 418  
Above: Aventura 315, 320, 325



MODEL	312	315	316
<b>Berths</b>	2	2	5
<b>Number of Axles</b>	1	1	1
<b>Internal Length</b> (at bed box height)	3.94m/12' 11"	4.61m/15' 2"	5.03m/16' 6"
<b>Overall Width</b>	2.16m/7' 1"	2.16m/7' 1"	2.16m/7' 1"
<b>Overall Height</b> (including Status TV aerial)	2.76m/9' 1"	2.76m/9' 1"	2.76m/9' 1"
<b>Overall Length</b>	5.56m/18' 3"	6.24m/20' 6"	6.65m/21' 10"
<b>Mass in Running Order</b>	956kg/18.8cwt	1036kg/20.4cwt	1119kg/22.0cwt*
<b>Essential Habitation Equipment Payload</b>	90kg/1.8cwt	82kg/1.6cwt	90kg/1.8cwt
<b>Personal Effects Payload</b>	96kg/1.9cwt	103kg/2.0cwt	137kg/2.7cwt
<b>Optional Equipment Payload</b>	4kg/0.1cwt	4kg/0.1cwt	4kg/0.1cwt
<b>Maximum Technical Permissible Laden Mass</b>	1146kg/22.6cwt	1225kg/24.1cwt	1350kg/26.6cwt
<b>Awning A/A Dimension††</b>	8.22m/26' 12"	8.90m/29' 2"	9.31m/30' 7"
<b>Tyre Size</b>	195/70 r14 91	195/70 r14 91	195/70r14 95

BED SIZES			
<b>Front Double†</b>	204cm x 190cm/6'8" x 6'3"	204cm x 190cm/6'8" x 6'3"	204cm x 190cm/6'8" x 6'3"
<b>or One Single</b>	190cm x 67cm/6'3" x 2'2"	190cm x 67cm/6'3" x 2'2"	190cm x 67cm/6'3" x 2'2"
<b>and One Single</b>	190cm x 67cm/6'3" x 2'2"	190cm x 67cm/6'3" x 2'2"	190cm x 67cm/6'3" x 2'2"
<b>Rear Double</b>			204cm x 119cm/6'8" x 3'11"
<b>Rear Bunk</b>			198cm x 56cm/6'6" x 1'10"
<b>Side Single (offside)</b>			
<b>Side Bunk</b>			
<b>Rear Lower Bunk</b>			
<b>Rear Upper Bunk</b>			

MODEL	318	319	320	325	330
<b>Berths</b>	4	4	4	4	6
<b>Number of Axles</b>	1	1	1	1	1
<b>Internal Length</b> (at bed box height)	5.39m/17' 8"	5.23m/17' 2"	5.23m/17' 2"	5.23m/17' 2"	5.50m/18' 1"
<b>Overall Width</b>	2.23m/7' 4"	2.23m/7' 4"	2.16m/7' 1"	2.16m/7' 1"	2.23m/7' 4"
<b>Overall Height</b> (including Status TV aerial)	2.76m/9' 1"	2.76m/9' 1"	2.76m/9' 1"	2.76m/9' 1"	2.76m/9' 1"
<b>Overall Length</b>	7.02m/23' 0"	6.86m/22' 6"	6.86m/22' 6"	6.86m/22' 6"	7.13m/23' 5"
<b>Mass in Running Order</b>	1181kg/23.2cwt	1135kg/22.3cwt	1138kg/22.4cwt	1133kg/22.3cwt	1195.0kg/23.5cwt
<b>Essential Habitation Equipment Payload</b>	82kg/1.6cwt	90kg/1.8cwt	82kg/1.6cwt	82kg/1.6cwt	90.0kg/1.8cwt
<b>Personal Effects Payload</b>	131kg/2.6cwt	129kg/2.5cwt	129kg/2.5cwt	129kg/2.5cwt	211.0kg/4.1cwt
<b>Optional Equipment Payload</b>	4kg/0.1cwt	4kg/0.1cwt	4kg/0.1cwt	4kg/0.1cwt	4.0kg/0.1cwt
<b>Maximum Technical Permissible Laden Mass</b>	1398kg/27.5cwt	1358kg/26.7cwt	1353kg/26.6cwt	1348kg/26.5cwt	1500.0kg/29.5cwt
<b>Awning A/A Dimension††</b>	9.68m/31' 9"	9.52m/31' 3"	9.52m/31' 3"	9.52m/31' 3"	9.79m/32' 1"
<b>Tyre Size</b>	175r14 99	175r14 99	175r14 99	175r14 99	175r14 99

208cm x 167cm/6'10" x 5'6"	209cm x 139cm/6'10" x 4'7"	204cm x 180cm/6'8" x 5'11"	204cm x 139cm/6'8" x 4'7"	204cm x 180cm/6'8" x 5'11"
190cm x 71cm/6'3" x 2'4"		190cm x 67cm/6'3" x 2'2"	190cm x 67cm/6'3" x 2'2"	180cm x 71cm/5'11" x 2'4"
167cm x 71cm/5'6" x 2'4"		180cm x 67cm/5'11" x 2'2"	190cm x 71cm/6'3" x 2'4"	180cm x 71cm/5'11" x 2'4"
198cm x 138cm/6'6" x 4'6"	205cm x 138cm/6'8" x 4'6"			
		180cm x 66cm/5'11" x 2'2"	180cm x 66cm/5'11" x 2'2"	180cm x 66cm/5'11" x 2'2"
		178cm x 56cm/5'10" x 1'10"	178cm x 56cm/5'10" x 1'10"	178cm x 56cm/5'10" x 1'10"
				182cm x 62cm/6'0" x 2'1"
				182cm x 60cm/6'0" x 2'0"

\*Estimated weight. †Front Double Bed sizes quoted with wrap round seating.

††Note on awning sizes: Due to the varying awning designs and sizes the awning sizes given are approximate only. Specific awning sizes must be confirmed by your dealer or the awning manufacturer prior to purchase.



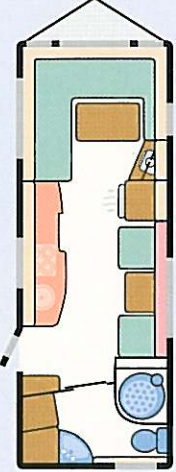
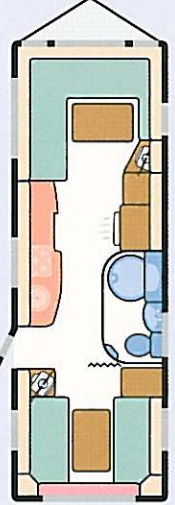

MODEL	215	216	217	415
		New Layout	New Layout	
<b>Berths</b>	2	2	2	4
<b>Number of Axles</b>	1	1	1	1
<b>Internal Length</b> (at bed box height)	4.61m/15' 2"	4.61m/15' 2"	4.61m/15' 2"	5.39m/17' 8"
<b>Overall Width</b>	2.23m/7' 4"	2.23m/7' 4"	2.23m/7' 4"	2.23m/7' 4"
<b>Overall Height</b> (including Status TV aerial)	2.76m/9' 1"	2.76m/9' 1"	2.76m/9' 1"	2.76m/9' 1"
<b>Overall Length</b>	6.29m/20' 8"	6.29m/20' 8"	6.29m/20' 8"	7.07m/23' 2"
<b>Mass in Running Order</b>	1134kg/22.4cwt*	1117kg/22.0cwt*	1102kg/21.7cwt	1252kg/24.6cwt*
<b>Essential Habitation Equipment Payload</b>	82kg/1.6cwt	82kg/1.6cwt	82kg/1.6cwt	82kg/1.6cwt
<b>Personal Effects Payload</b>	104kg/2.0cwt	104kg/2.0cwt	104kg/2.0cwt	132kg/2.6cwt
<b>Optional Equipment Payload</b>	4kg/0.1cwt	17kg/0.4cwt	17kg/0.4cwt	4kg/0.1cwt
<b>Maximum Technical Permissible Laden Mass</b>	1324kg/26.1cwt*	1320kg/26.0cwt*	1305kg/25.7cwt	1470kg/28.9cwt*
<b>Awning A/A Dimension††</b>	8.90m/29' 2"	8.90m/29' 2"	8.90m/29' 2"	9.68m/31' 9"
<b>Tyre Size</b>	195/70r14 95	195/70r14 95	195/70r14 95	175r14 99
<b>BED SIZES</b>				
<b>Front Double†</b>	208cm x 190cm/6'10" x 6'3"	208cm x 190cm/6'10" x 6'3"	208cm x 139cm/6'10" x 4'7"	208cm x 166cm/6'10" x 5'5"
<b>or One Single</b>	190cm x 71cm/6'3" x 2'4"	190cm x 71cm/6'3" x 2'4"		190cm x 71cm/6'3" x 2'4"
<b>and One Single</b>	190cm x 71cm/6'3" x 2'4"	190cm x 71cm/6'3" x 2'4"		166cm x 71cm/5'5" x 2'4"
<b>Rear Double</b>				196cm x 138cm/6'5" x 4'6"
<b>Rear Bunk</b>				
<b>Side Single (offside)</b>				
<b>Side Bunk</b>				


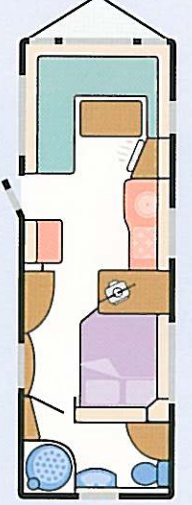
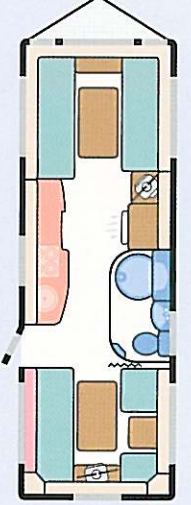
\*Estimated weight. †Front Double Bed sizes quoted with wrap round seating.

††Note on awning sizes: Due to the varying awning designs and sizes the awning sizes given are approximate only. Specific awning sizes must be confirmed by your dealer or the awning manufacturer prior to purchase.

MODEL	416	417	418	420	516	517
			Revised Layout	New Layout	Revised Layout	Revised Layout
<b>Berths</b>	4	4	4	4	5	5
<b>Number of Axles</b>	1	1	1	1	1	1
<b>Internal Length</b> (at bed box height)	5.23m/17' 2"	5.23m/17' 2"	5.39m/17' 8"	5.39m/17' 8"	5.39m/17' 8"	5.39m/17' 8"
<b>Overall Width</b>	2.23m/7' 4"	2.23m/7' 4"	2.23m/7' 4"	2.23m/7' 4"	2.23m/7' 4"	2.23m/7' 4"
<b>Overall Height</b> (including Status TV aerial)	2.76m/9' 1"	2.76m/9' 1"	2.76m/9' 1"	2.76m/9' 1"	2.76m/9' 1"	2.76m/9' 1"
<b>Overall Length</b>	6.91m/22' 8"	6.91m/22' 8"	7.07m/23' 2"	7.07m/23' 2"	7.07m/23' 2"	7.07m/23' 2"
<b>Mass in Running Order</b>	1223kg/24.0cwt	1225kg/24.1cwt*	1273kg/25.0cwt*	1263kg/24.9cwt*	1272kg/25.0cwt*	1267kg/24.9cwt*
<b>Essential Habitation Equipment Payload</b>	82kg/1.6cwt	82kg/1.6cwt	82kg/1.6cwt	82kg/1.6cwt	82kg/1.6cwt	82kg/1.6cwt
<b>Personal Effects Payload</b>	130kg/2.6cwt	130kg/2.6cwt	132kg/2.6cwt	132kg/2.6cwt	142kg/2.8cwt	142kg/2.8cwt
<b>Optional Equipment Payload</b>	4kg/0.1cwt	4kg/0.1cwt	4kg/0.1cwt	4kg/0.1cwt	4kg/0.1cwt	4kg/0.1cwt
<b>Maximum Technical Permissible Laden Mass</b>	1439kg/28.3cwt	1441kg/28.4cwt*	1491kg/29.3cwt*	1481kg/29.2cwt*	1500kg/29.5cwt*	1495kg/29.4cwt*
<b>Awning A/A Dimension††</b>	9.52m/31' 3"	9.52m/31' 3"	9.68m/31' 9"	9.68m/31' 9"	9.68m/31' 9"	9.68m/31' 9"
<b>Tyre Size</b>	175r14 99	175r14 99	175r14 99	175r14 99	175r14 99	175r14 99
<b>BED SIZES</b>						
<b>Front Double†</b>	208cm x 180cm/6'10" x 5'11"	208cm x 139cm/6'10" x 4'7"	208cm x 180cm/6'10" x 5'11"	208cm x 139cm/6'10" x 4'7"	208cm x 180cm/6'10" x 5'11"	208cm x 139cm/6'10" x 4'7"
<b>or One Single</b>	190cm x 71cm/6'3" x 2'4"	190cm x 71cm/6'3" x 2'4"	190cm x 71cm/6'3" x 2'4"		190cm x 71cm/6'3" x 2'4"	
<b>and One Single</b>	180cm x 71cm/5'11" x 2'4"	190cm x 71cm/6'3" x 2'4"	180cm x 71cm/5'11" x 2'4"		180cm x 71cm/5'11" x 2'4"	
<b>Rear Double</b>			190cm x 138cm/6'3" x 4'6"	190cm x 138cm/6'3" x 4'6"	192cm x 138cm/6'4" x 4'6"	208cm x 138cm/6'10" x 4'6"
<b>Rear Bunk</b>					192cm x 58cm/6'4" x 1'11"	192cm x 58cm/6'4" x 1'11"
<b>Side Single (offside)</b>	180cm x 66cm/5'11" x 2'2"	180cm x 66cm/5'11" x 2'2"				
<b>Side Bunk</b>	178cm x 56cm/5'10" x 1'10"	178cm x 56cm/5'10" x 1'10"				



MODEL	419	520
	New Model	Revised Layout
		
		
<b>Berths</b>	4	5
<b>Number of Axles</b>	2	2
<b>Internal Length</b> (at bed box height)	5.85m/19' 2"	6.27m/20' 7"
<b>Overall Width</b>	2.23m/7' 4"	2.23m/7' 4"
<b>Overall Height</b> (including Status TV aerial)	2.76m/9' 1"	2.76m/9' 1"
<b>Overall Length</b>	7.53m/24' 8"	7.95m/26' 1"
<b>Mass in Running Order</b>	1373kg/27.0cwt	1474kg/29.0cwt*
<b>Essential Habitation Equipment Payload</b>	115kg/2.3cwt	115kg/2.3cwt
<b>Personal Effects Payload</b>	136kg/2.6cwt	150kg/2.9cwt
<b>Optional Equipment Payload</b>	29kg/0.6cwt	29kg/0.6cwt
<b>Maximum Technical Permissible Laden Mass</b>	1653kg/32.5cwt	1768kg/34.8cwt*
<b>Awning A/A Dimension††</b>	10.08m/33' 1"	10.50m/34' 5"
<b>Tyre Size</b>	175/65r14 82	175/65r14 82
<b>BED SIZES</b>		
<b>Front Double†</b>	208cm x 139cm/6'10" x 4'7"	208cm x 139cm/6'10" x 4'7"
<b>or One Single</b>		
<b>and One Single</b>		
<b>Rear Double</b>		208cm x 138cm/6'10" x 4'6"
<b>Rear Bunk</b>		192cm x 58cm/6'4" x 1'11"
<b>Side Single (offside)</b>	180cm x 66cm/5'11" x 2'2"	
<b>Side Bunk</b>	178cm x 56cm/5'10" x 1'10"	
<b>Rear Lower Bunk</b>		
<b>Rear Upper Bunk</b>		

MODEL	535	540	620
	Revised Layout	Revised Layout	Revised Layout
			
<b>Berths</b>	4	4	5 Opt 6
<b>Number of Axles</b>	2	2	2
<b>Internal Length</b> (at bed box height)	6.27m/20' 7"	6.27m/20' 7"	6.27m/20' 7"
<b>Overall Width</b>	2.23m/7' 4"	2.23m/7' 4"	2.23m/7' 4"
<b>Overall Height</b> (including Status TV aerial)	2.76m/9' 1"	2.76m/9' 1"	2.76m/9' 1"
<b>Overall Length</b>	7.95m/26' 1"	7.95m/26' 1"	7.95m/26' 1"
<b>Mass in Running Order</b>	1427kg/28.1cwt*	1494kg/29.4cwt*	1475kg/29.0cwt*
<b>Essential Habitation Equipment Payload</b>	115kg/2.3cwt	115kg/2.3cwt	115kg/2.3cwt
<b>Personal Effects Payload</b>	140kg/2.7cwt	140kg/2.7cwt	160kg/3.1cwt
<b>Optional Equipment Payload</b>	29kg/0.6cwt	29kg/0.6cwt	49kg/1.0cwt
<b>Maximum Technical Permissible Laden Mass</b>	711kg est/33.7cwt*	1778kg/35.0cwt*	1799kg/35.4cwt*
<b>Awning A/A Dimension††</b>	10.50m/34' 5"	10.50m/34' 5"	10.50m/34' 5"
<b>Tyre Size</b>	175/65r14 82	175/65r14 82	175/65r14 82
<b>BED SIZES</b>			
<b>Front Double†</b>	208cm x 174cm/6'10" x 5'8½"	208cm x 139cm/6'10" x 4'7"	208cm x 180cm/6'10" x 5'11"
<b>or One Single</b>	174cm x 71cm/5'8½" x 2'4"		190cm x 71cm/6'3" x 2'4"
<b>and One Single</b>	180cm x 71cm/5'11" x 2'4"		180cm x 71cm/5'11" x 2'4"
<b>Rear Double</b>	186cm x 134cm/6'1" x 4'5"	192cm x 138cm/6'4" x 4'6"	205cm x 137cm/6'9" x 4'6"
<b>Rear Bunk</b>			
<b>Side Single (offside)</b>			177cm x 68cm/5'10" x 2'3"
<b>Side Bunk</b>			177cm x 68cm/5'10" x 2'3"
<b>Rear Lower Bunk</b>			172cm x 56cm/5'8" x 1'10"
<b>Rear Upper Bunk</b>			172cm x 56cm/5'8" x 1'10"

\*Estimated weight. †Front Double Bed sizes quoted with wrap round seating.

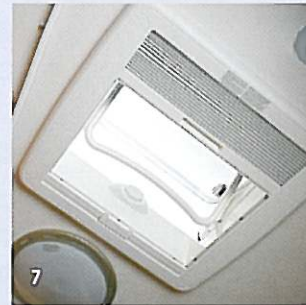
††Note on awning sizes: Due to the varying awning designs and sizes the awning sizes given are approximate only. Specific awning sizes must be confirmed by your dealer or the awning manufacturer prior to purchase.



# Features



1. New colour co-ordinated Champagne electrical sockets and switches
2. Flush fitting aluminium side windows with concertina blinds and flyscreens (GTS Vogue and Spectrum ranges)
3. Underslung wheel carrier with steel rim and tyre
4. Removable draining board (GTS Vogue and Spectrum ranges)
5. Restyled GRP back panel incorporating high level spoiler, high level brake light and round rear light cluster
6. Colour co-ordinated electrical control panel over exterior door (GTS Vogue and Spectrum ranges)
7. Multi-position mini Heki clear skylight with blind and flyscreen (model specific, GTS Vogue and Spectrum ranges)
8. 135 litre 7 series electronic fridge freezer (Spectrum 540)
9. Microwave fitted as standard in Spectrum, optional in GTS Vogue 216 and 217
10. Large curved upper lockers with integral front corner light moulding (GTS Vogue and Spectrum ranges)
11. Omnivent 3 speed roof fan and skylight (GTS Vogue and Spectrum ranges)
12. Lined external access locker (model specific)
13. Luxury loose fit carpets with wood block effect vinyl floor covering (GTS Vogue and Spectrum ranges)





## Exterior

### New for 2004

- New glacier white exterior
- Understung spare wheel carrier
- GRP front panel with 3 opening windows
- ABS rear lower panel with rear light clusters
- Durable one piece GRP sidewall construction
- Exterior door with window and blind
- Exterior access locker door (end washroom models)
- Exterior access battery box with mains inlet (battery not included)
- Lined external access locker (model specific)
- Gas bottle storage with gas strut supported door
- Double glazed opening windows with concealed fixings
- Heki large liting panoramic roof window with flynet and blind (2 in 318)
- AL-KO lightweight galvanised steel chassis with Euro-Axle
- Gas strut assisted handbrake
- 14" wheels with trims
- High level brake light
- Reversing light
- High level side marker lights
- Awning light
- Awning channel on both sides of caravan
- Status TV/FM aerial and booster
- Removable fridge vents with integral fly mesh for easy maintenance and inspection
- Quick release door retainer
- Fixing points for rear mounted cycle rack (model specific)

## Lounge & Dining Area

- Pennsylvania Cherry colour furniture with co-ordinated handles
- 'Bilbao' chenille upholstery fabric
- Worktop laminate in Maple woodgrain
- Long front beds 1920mm (6'3½") (model specific)
- Large 'L' shaped front lounge (319 & 325)
- Chest of drawers with occasional table (model specific)
- Curtain storage for centre dinette curtain (320 & 325)
- Dedicated permanent bunk bed featuring fixed ladder, lockers and lighting (330 only)
- Two table storage compartments (330 only)
- Freestanding table with dedicated storage location
- Front roof lockers
- Aircraft style upper locker doors
- Rolled edged ash/hardwood mouldings to worktops and tables
- Cocktail cabinet
- Front ventilation boards
- Split front base cushions for easy bed make up
- Super quality domestic style sprung seats and backrests

- Cantilever hinged bed tops sized for easy access
- Curtains with tie-backs and contrasting pelmets
- Twin curtain tracks for improved hanging presentation and ease of use
- Scatter cushions
- Drop down front side bed flaps
- Luxury fitted carpet
- Clock

## Body Structure

- 25mm bonded side walls with polystyrene insulation core
- 32mm semi bonded roof with polystyrene core
- 44mm bonded floor with styrofoam insulation core

## Kitchen

### New for 2004

- Dual fuel hob with 800w electric hot plate and three gas burners with electronic ignition incorporating flame failure protection
- New flush fitting gun metal grey thermostatic oven with grill and pan storage
- Flush fitting stainless steel bowl and drainer with toughened glass lid
- Long spouted surface mounted microswitched chrome tap
- 80 litre fridge with full width freezer and electronic ignition
- L shape kitchen with swivel TV facility incorporating drop down extendible work surface (318)
- Heat resistant work surface
- Moulded cutlery drawer on smooth steel runners
- Safety hob lid with cut out feature

## Washroom

- Fully fitted luxury washroom with sealed shower cubicle (model specific)
- Fully fitted luxury washroom with vanity unit and curtained shower area (model specific)
- Thelford cassette toilet with independent tank and manual flush
- Access to wardrobe shelving from vanity mirror door (315, 320 & 325)
- Improved design hinged door to allow see through vision (315, 320 & 325)
- Large window in centre washrooms (316 & 319)
- Chrome finish shower equipment
- Microswitched chrome finish lever mixer tap
- Light pelmet and shelf (model specific)

## Heating & Plumbing

### New for 2004

- New dual fuel gas and mains 800W electric storage water heater
- Bulkhead mounted gas regulator
- New updated 12 litre/minute submersible pump

- Dual fuel 3kw gas space heater complete with 2kw electric ducted blown air heating
- Grade 2 classification for thermal heating and insulation
- Large bore understung rigid waste pipes
- Inboard semi-rigid piped fresh water system

## Electrical

### New for 2004

- TV station with modern 230v/12v sockets and coax/aerial connection
- Fully protected mains electric system with two 230v mains sockets
- 12 amp switchmode charger/transformer
- 12v electrical system with one 12v socket and plug
- Electrical 12v distribution panel
- Colour co-ordinated mains lights
- Colour co-ordinated 12v halogen ceiling lights
- Colour co-ordinated ellipse kitchen light
- Colour co-ordinated halogen lighting in washroom
- Colour co-ordinated adjustable 12v halogen reading lights
- 25 metre mains hook-up lead

## Fittings & Equipment

### New for 2004

- Steel rimmed spare wheel and tyre
- Full height exterior door flyscreen
- Large exterior offside entry door into multifunction storage area, incorporating a unique hinged bunk base allowing full access (330 only)
- Storage area floor fixing eyelets, for securing large items (330 only)
- Night latch ventilation to all windows
- Cassette flyscreen and blind to all windows
- Multi directional roof lights with sliding blind and flynet
- Caravan entrance step
- Bunk ladder (where bunks provided)
- Smoke alarm
- Wooden partition doors to rear bedroom models (model specific)
- Domestic style cabinet hinges
- Smooth operation steel drawer runners
- Removable entrance mat
- Isolation taps to all gas appliances
- Pull out roller slatted beds

## Security & Safety

- AKS 2004 AL-KO stabiliser
- Identity number etched to windows and caravan chassis
- Concealed security data chip within caravan construction
- Single key operated locks
- All models comply with European standards



## Exterior

### New for 2004

- New glacier white exterior
- Restyled GRP back panel incorporating high level spoiler, high level brake light and round rear light cluster
- New increased body width of 2.23m/7'4"
- Restyled graphics scheme
- Flush fitting aluminium framed windows
- AL-KO Euro hitch with assisted handbrake
- Underlung spare wheel carrier
- Heavy duty corner steadies
- Restyled wheel spat
- External gas bottle compartment light moulded into a restyled cover
- New curved high level side marker lights
- Barbecue point with isolation valve
- New body colour front gutter mould
- GRP front panel with 3 opening windows
- Durable one piece GRP sidewall construction
- Exterior door with window, blind and moulded interior door liner with integral magazine storage
- External access heated locker (model specific)
- Exterior access battery box with mains inlet and aerial input socket (battery not included)
- External access door under fixed bed (415, 418, 420)
- Lined external access locker with 230v external socket
- Gas bottle storage with gas strut supported door
- Heki large hilling panoramic roof window with flynet and blind (2 in 415)
- AL-KO lightweight galvanised steel chassis with Euro-Axle
- 14" polished alloy wheels
- Reversing light
- Flush fitting awning light
- Awning channel on both sides of caravan
- Status TV/FM aerial and booster
- Removable fridge vents for easy maintenance and inspection
- Quick release door retainer
- Fixing points for rear mounted cycle rack (model specific)

## Lounge & Dining Area

### New for 2004

- Large curved upper lockers with integral front corner light moulding
- Luxury loose fit carpet
- Wood block effect vinyl floor covering
- New furniture door handle
- Pennsylvania Cherry colour furniture with co-ordinated handles
- Worktop laminate in Maple woodgrain
- 'Anita' chenille upholstery fabric
- Long front beds 1920mm (6'3½") (model specific)
- Large 'L' shaped front lounge (model specific)
- Freestanding table with dedicated storage location
- Chest of drawers with occasional table (model specific)
- Front roof lockers

- Cocktail cabinet with courtesy light
- Backrest ventilation boards
- Canilever hinged bed lops sized for easy access
- Drop down front side bed flaps
- Rolled edged mouldings to worktops and tables
- Super quality domestic style sprung seats and backrests
- Split front base cushions for easy bed make up
- Curtains with lie-backs and contrasting pelmets
- Curtain storage for centre dinette curtain (model specific)
- Twin curtain tracks for improved hanging presentation and ease of use
- Scatter cushions
- Clock

## Body Structure

- 44mm bonded floor with styrofoam insulation core
- 32mm semi bonded roof with polystyrene core
- 25mm bonded side walls with polystyrene insulation core

## Kitchen

### New for 2004

- Flush fitting gun metal grey thermostatic oven with grill and pan storage
- Recessed stainless steel bowl with pillar tap, removable draining board and chopping board
- New 86 litre '7 series' electronic power fridge (216 & 217)
- New 77 litre '7 series' electronic power fridge (model specific)
- Microwave oven provision (216,217)
- Dual fuel hob with 800w electric hot plate and three gas burners incorporating flame failure protection and electronic ignition
- L shaped kitchen with swivel TV facility and worktop extension (415)
- Moulded cutlery drawer on smooth steel runners
- Pull out storage baskets (model specific)
- Heat resistant work surface
- Safety hob lid with cut out feature
- Utensil rack (model specific)
- Towel rail on fridge door

## Washroom

### New for 2004

- Fully fitted luxury washroom with vanity unit and separate sealed shower cubicle (not 415)
- Thelford cassette toilet with independent tank and electric flush
- Access to wardrobe shelving from vanity mirror door (215, 416 & 417)
- Chrome finish shower equipment
- Microswitched chrome finish lever mixer tap
- Opening window

## Heating & Plumbing

### New for 2004

- New dual fuel gas and mains 800W electric storage water heater
- Bulkhead mounted gas regulator
- Up rated 12 litre/minute submersible water pumps

- Dual fuel 3kw gas space heater complete with 2kw electric ducted blown air heating
- Grade 2 classification for thermal heating and insulation
- Large bore underlung rigid waste pipes
- Inboard semi-rigid piped fresh water system

## Electrical

### New for 2004

- New electrical control panel over exterior door
- New electrical sockets and switches
- Fully protected mains electric system with three 230v mains sockets
- ESM 2000 power supply unit incorporating 12 amp switchmode charger/transformer
- TV station with 230v/12v sockets and coax/aerial connection
- Colour co-ordinated mains lights
- Colour co-ordinated adjustable 12v halogen reading lights
- Colour co-ordinated halogen lighting in washroom
- Colour co-ordinated 12v halogen ceiling lights
- 12v electrical system with one 12v socket and plug
- Colour co-ordinated downlighters in kitchen
- Fitted speakers, wiring, housing and aerial for easy fitting of a sound system
- Omnivent 3 speed fan and skylight
- 25 metre mains hook-up lead

## Fittings & Equipment

### New for 2004

- Multi position 'Mini Heki' clear skylights with blind and flyscreen (model specific)
- Cassette flyscreens and blinds to all windows (concertina on sides and rear)
- Steel rimmed spare wheel and tyre
- Concertina partition doors to rear bedroom models (model specific)
- Night latch ventilation to all windows
- Multi directional roof lights with sliding blind and flynet
- Full height exterior door flyscreen
- Entrance mat with embroidered logo in brush out tray
- Caravan entrance step
- Smoke alarm
- Bunk ladder (where bunks provided)
- Removable hanging rail in shower (model specific)
- Domestic style cabinet hinges
- Pull out roller slatted beds
- Smooth operation steel drawer runners
- Isolation taps to all gas appliances

## Security & Safety

- AKS 2004 AL-KO stabiliser
- Identity number etched to windows and caravan chassis
- Concealed security data chip within caravan construction
- Single key operated locks
- All models comply with European standards



**Exterior****New for 2004**

- New glacier white exterior
- Restyled GRP back panel incorporating high level spoiler, high level brake light and round rear light cluster
- New graphics scheme
- Restyled wheelspot
- New body colour front gutter mould
- External gas bottle compartment light moulded into a restyled cover
- New curved high level side marker lights
- AL-KO Euro hitch with assisted handbrake
- New 14" alloy wheels
- Underslung spare wheel carrier
- Barbecue point with isolation valve
- GRP front panel with 3 opening windows
- Durable one piece GRP sidewall construction
- Flush fitting aluminium framed windows
- Heki large lifting panoramic roof window with flynet and blind (2 in 535 & 540)
- Exterior door with window, blind and moulded interior door liner with integral magazine storage
- External access door under fixed bed (540)
- Lined external access locker with 230v external socket
- Exterior access battery box with mains inlet and aerial input socket (battery not included)
- Gas bottle storage with gas strut supported door
- AL-KO lightweight galvanised steel chassis with Euro-Axle
- Heavy duty corner steadies
- Status TV/FM aerial and booster
- Flush fitting awning light
- Reversing light
- Awning channel on both sides of caravan
- Removable fridge vents for easy maintenance and inspection
- Quick release door retainer
- Fixing points for rear mounted cycle rack (model specific)

**Lounge & Dining Area****New for 2004**

- New large curved upper lockers with integrated front corner light mouldings
- 'Johan Stanford' upholstery fabric
- Luxury loose fit carpet
- Wood block effect vinyl floor covering
- Aluminium double framed bed tops (535, 540)
- New furniture door handles
- 'Pennsylvania Cherry' colour furniture
- Worktop laminate in Maple woodgrain
- Long front beds 1920mm (6'3½") (model specific)
- Drop down front side bed flaps
- Improved cantilever hinged action bed top with beech sprung slats
- Backrest ventilation boards
- Freestanding table with dedicated storage location
- Curtain storage for centre dinette curtain (Spectrum 419)
- Front roof lockers
- Rolled edged mouldings to worktops and tables

- Two television station points (520, 620, 535)
- Super quality domestic style sprung seats and backrests
- Split front base cushions for easy bed make up
- Curtains with lie-backs and contrasting pelmets
- Twin curtain tracks for improved hanging presentation and ease of use
- Scatter cushions
- Cocktail cabinet with courtesy light
- Clock
- Chest of drawers with occasional table (model specific)
- Optional 6 berth layout (620)

**Body Structure**

- 44mm bonded floor with styrofoam insulation core
- 32mm semi bonded roof with polystyrene core
- 25mm bonded side walls with polystyrene insulation core

**Kitchen****New for 2004**

- Flush fitting gun metal grey thermostatic oven with grill and pan storage
- Dual fuel hob with 800w electric hot plate and three gas burners incorporating flame failure protection and electronic ignition
- 86 litre '7 series' electronic power fridge
- 135 litre '7 series' electronic fridge/freezer (540)
- Microwave oven
- Recessed stainless steel bowl with pillar tap, removable draining board and chopping board
- L shaped kitchen with swivel TV facility and worktop extension (540)
- Safety hob lid with cut out feature
- Heat resistant work surface
- Moulded cutlery drawer on smooth steel runners
- Towel rail on fridge door
- Pull out storage baskets (model specific)
- Utensil rack (model specific)

**Washroom****New for 2004**

- New fully fitted luxury washroom with vanity unit and sealed shower cubicle (model specific)
- Thetford cassette toilet with independent tank and electric flush
- Microswitched chrome finish lever mixer tap
- Chrome finish shower equipment
- Opening window

**Heating & Plumbing****New for 2004**

- New dual fuel gas and mains 800W electric storage water heater
- Bulkhead mounted gas regulator
- Up rated 12 litres/minute submersible water pump
- Dual fuel 3kw gas space heater complete with 2kw electric ducted blown air heating
- Grade 2 classification for thermal heating and insulation
- Internal 9 gallon water tank with filling pump and level gauge

- Inboard semi-rigid piped fresh water system
- Large bore underslung rigid waste pipes

**Electrical****New for 2004**

- New electrical control panel over exterior door
- New electrical sockets and switches
- Fully protected mains electric system with four 230v mains sockets (one external)
- 12v electrical system with one 12v socket and plug (2 in 520 & 620)
- Colour co-ordinated adjustable 12v halogen reading lights
- Colour co-ordinated downlighters in kitchen
- Colour co-ordinated halogen lighting in washroom
- Colour co-ordinated 12v halogen ceiling lights
- Colour co-ordinated mains lights
- ESM 2004 power supply unit
- TV station with 230v/12v sockets and coax/aerial connection (2 in 520 & 620)
- Omnivent 3 speed fan and skylight
- Fitted speakers, wiring, housing and aerial for easy fitting of a sound system
- 25 metre mains hook-up lead

**Fittings & Equipment****New for 2004**

- Multi position 'Mini Heki' clear skylights with blind and flyscreen (model specific)
- Concertina partition doors to rear bedroom models (model specific)
- Cassette flyscreens and blinds to all windows (concertina to sides and rear)
- Full height exterior door flyscreen
- Multi directional roof lights with sliding blind and flynet
- Night latch ventilation to all windows
- Entrance mat with embroidered logo in brush out tray
- Caravan entrance step
- Portable wheeled waste water container
- Smoke alarm
- Bunk ladder (where bunks provided)
- Removable hanging rail in shower (model specific)
- Steel rimmed spare wheel and tyre
- AL-KO side mounted scissor jack
- Domestic style cabinet hinges
- Isolation taps to all gas appliances
- Smooth operation steel drawer runners
- Pull out roller slatted beds

**Security & Safety****New for 2004**

- New lockable rear corner steadies (lock not supplied)
- AKS 2004 AL-KO stabiliser
- Alarm system with passive infra red sensor and tilt sensor with easy to use key fob operation
- Concealed security data chip within caravan construction
- Identity number etched to windows and caravan chassis
- Single key operated locks
- All models comply with European standards



Your Local Dealer



Leaders in Leisure

Abbey Caravans, Dunswell Road, Cottingham, East Yorkshire HU16 4JX.  
Tel: 01482 847332 Fax: 01482 841042  
e-mail: enquiry@swiftleisure.co.uk web site: www.abbeycaravans.co.uk  
A MEMBER OF THE SWIFT GROUP



INVESTOR IN PEOPLE

This brochure does not constitute an offer by Swift Group Limited (Swift). Swift reserves the right to alter specifications and prices at any time as materials and conditions demand. Distributors and dealers sell Abbey products on their own account and not as agents of Swift. Accordingly they have no authority to bind Swift or to make any representation or undertaking whatsoever on behalf of Swift.

The touring caravans described in this brochure are designated by their model year. The model year runs from 1 September to 31 August and the despatch of 2004 models will have commenced on or after 1 September 2003.

Issued September 2003

Cars courtesy of Volvo Cars UK Limited

