

BESSACARR

Caravan Range 2004

**YOUR 1ST CHOICE FOR
MORE CHOICE**

- OVER 300 CARAVANS ON SHOW
- INDOOR & SEASONAL OUTDOOR CAMPING DISPLAY
- AWNING DISCOUNT CENTRE
- ACCESSORIES SUPERMARKET
- 5 STAR SERVICE CENTRE & REPAIR WORKSHOPS
- FINANCE & INSURANCE (SUBJECT TO STATUS)

**GUARANTEED A
WARM WELCOME**

HIGHBRIDGE

Caravan and Camping Centre

**OPEN 7 DAYS
A WEEK**

 **01278 782725**

A38, BRISTOL RD, HIGHBRIDGE, SOMERSET, TA9 4EX
www.highbridgecaravans.co.uk



Individually styled ~ beautifully built

HOLIDAYS

in luxury

Bessacarr offers you an experience in luxury, style and elegance with their magnificent new range of single and twin axle tourers. Whilst retaining a classical, traditional style, the Cameo boasts a whole new look. From the unique lines of the individually designed exteriors to the extravagance of the exclusive interiors, the new Bessacarr Cameo range takes touring to another level.

Cameo's distinctive offering of designer appeal is without compromise. Showing great attention to detail and a quality finish, the Cameo is in a class of its own.

With refined interiors enjoying greater levels of comfort, style and quality, the Cameo collection strikes a balance between form and function.

Quality and service are assured with all models backed by a privileged service from specially selected dealers and a comprehensive three year manufacturer backed SuperSure warranty, which together provide the greatest luxury of all - the freedom to tour with peace of mind.

Bessacarr has an active owners club, open to all purchasers of Bessacarr tourers. Full details can be found by logging onto www.bessacarr-ownersclub.co.uk



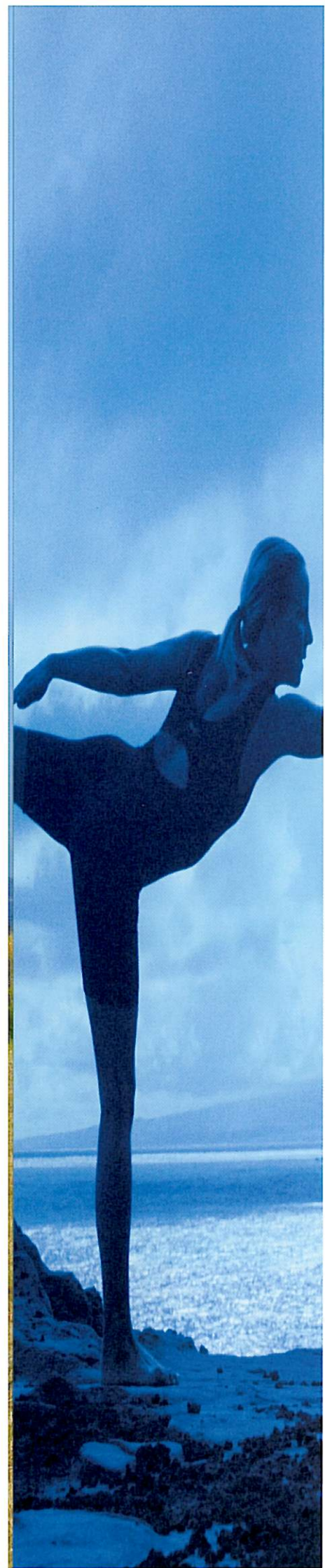
All Bessacarr models have been certified by the National Caravan Council for compliance with stringent European Standards, British Legislation and industry set Codes of Practice specifically relating to health and safety issues. The approval process covers the testing and inspection of critical areas of the product from fire safety, weights and dimensions, to gas, electrics and ventilation. Every Bessacarr caravan carries the "NCC Approved Caravan" badge. The NCC also conduct unannounced inspections at the Bessacarr factory to ensure continued compliance. NCC Approval gives you peace of mind that your caravan is legal and safe.



TWIN-AXLE

stability

A skillfully designed all-new exterior offers a unique and exclusive appeal. Tasteful new graphics are understated, yet add a splash of colour to the sleek white bodyshell. A stylish new GRP rear panel incorporates innovative and stylish light clusters, successfully combining aesthetics with functionality. A new colour coded-framed Seitz one-piece door has an opening window for added ventilation and a distinctive new look, and complements the colour coded framed Seitz windows. A fully bonded roof, chrome grab handles and smart alloy wheels complete this designer style, whilst an Al-ko Euro AKS 2004 stabiliser ensures easy towing.

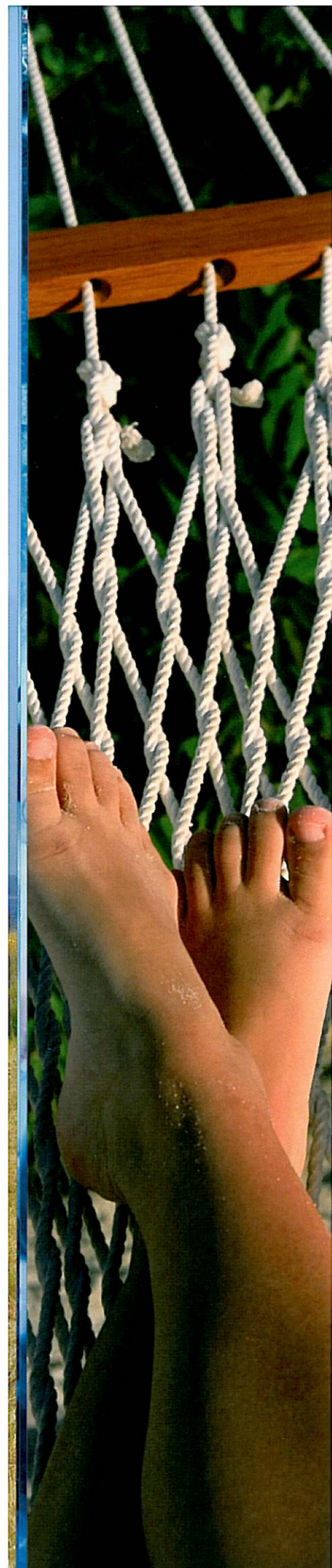


BATHE IN tranquillity

Continuing the outstanding levels of specification seen throughout the range, Bessacarr displays the very latest in washroom design. Careful planning and design innovation ensures that all available space fulfils its potential. Stylish new wallboard panelling and contemporary chrome finish equipment add to the sophisticated, modern look, and improved hanging space in the washroom wardrobe creates a useful storage area. Separate sealed circular shower units and electric flush Thetford toilets all add to the quality appeal.



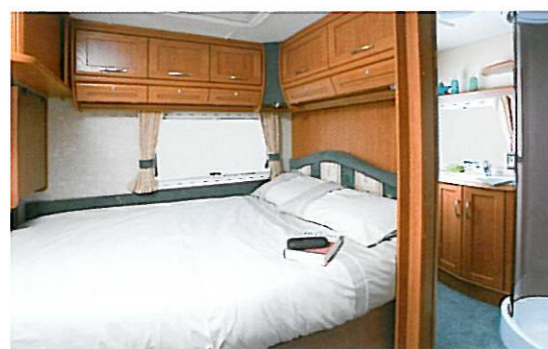
CAMEO 525SL, 550GL & 625GL



SLEEP

serenely

Bessacarr's standards of accommodation are exemplified with their sumptuous beds. Bessacarr offers a choice of four model layouts, each with different sleeping arrangements, and each ensuring a perfect night's sleep. All beds are quick and simple to assemble and have beech sprung slats giving superior levels of comfort and cushion support.



CAMEO 625GL

DINE IN splendour

The Cameo's lavish and comfortable environment guarantees a pleasant dining experience. The sparkling stainless steel kitchen boasts an enviable specification and domestic style appliances such as microwave and dual fuel oven with electric hotplate and three gas burners. A new sink with pull-out chopping board, pedestal kitchen tap and removable drainer provides more work space than ever before, and smart wood effect tambour doors on the cupboards complete this stylish and unique look.



CAMEO 495SL



CAMEO 525SL

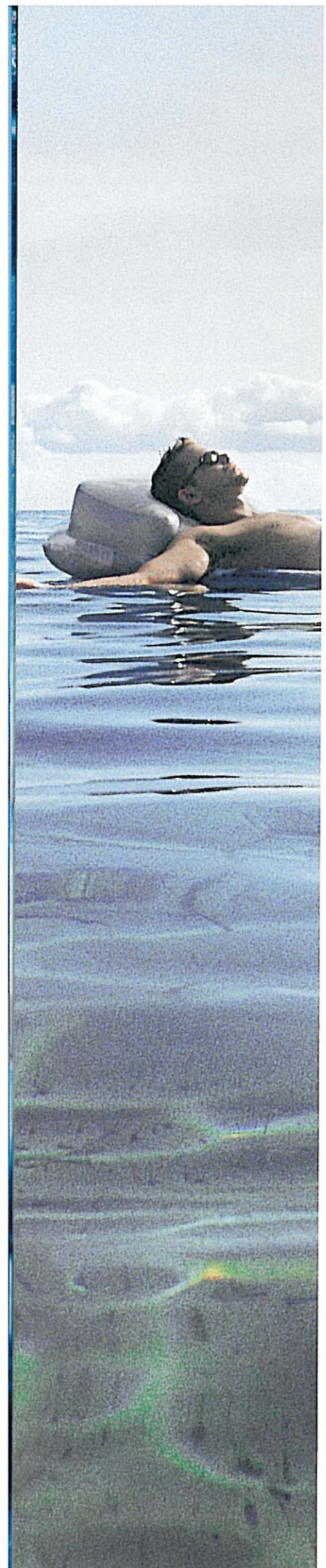
RELAX

in comfort

Throughout the caravan, Bessacarr's attention to detail is evident. A team of experienced designers have created a highly desirable living space that is both sumptuous and practical. The Cameo offers a choice of two new luxurious soft furnishing schemes in soothing green or stylish tan, each perfectly complementing the richly polished Cherry Wave colour furniture. Special touches include reclining seats, cocktail cabinet and CD player as standard. New mini Heki rooflights introduce even more light and air into the already spacious atmosphere.



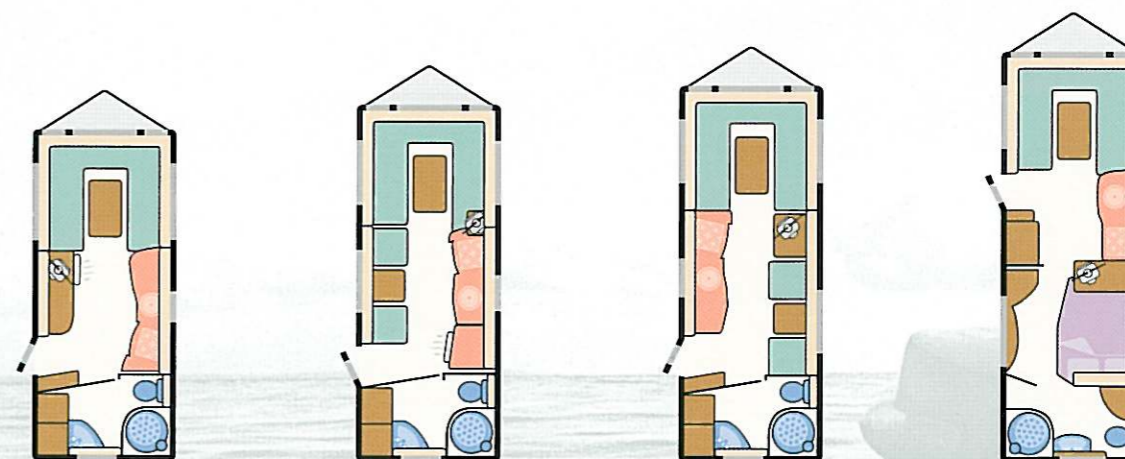
CAMEO 495SL



CAMEO 625GL

CAMEO

specification



Model	495SL	525SL	550GL	625GL
Berths	2	3	3	4
Number of Axles	1	1	2	2
Internal Length (at bed box height)	5.09m/16' 8"	5.36m/17' 7"	5.85m/19' 2"	6.35m/20' 10"
Overall Width	2.23m/7' 4"	2.23m/7' 4"	2.23m/7' 4"	2.23m/7' 4"
Overall Height (including Status TV aerial)	2.80m/9' 2"	2.80m/9' 2"	2.71m/8' 11"	2.71m/8' 11"
Overall Length	6.77m/22' 3"	7.05m/23' 1"	7.54m/24' 9"	8.04m/26' 4"
Mass in Running Order	1349kg/26.6cwt	1403kg/27.6cwt	1494kg/29.4cwt*	1590kg/31.3cwt
Essential Habitation Equipment Payload	115kg/2.3cwt	115kg/2.3cwt	115kg/2.3cwt	115kg/2.3cwt
Personal Effects Payload	109kg/2.1cwt	132kg/2.6cwt	136kg/2.7cwt	141kg/2.8cwt
Optional Equipment Payload	27kg/0.5cwt	47kg/0.9cwt	47kg/0.9cwt	27kg/0.5cwt
Maximum Technical Permissible Laden Mass	1600kg/31.5cwt	1697kg/33.4cwt	1792kg/35.3cwt*	1873kg/36.9cwt
Awning A/A Dimension**	9.42m/30' 11"	9.69m/31' 9"	10.18m/33' 5"	10.68m/35' 0"
Tyre Size	195/70r15 104	195/70r15 104	165r13 82	165r13 82
Bed Sizes				
Front Double'	205cm x 188cm/6'9" x 6'2"	205cm x 177cm/6'9" x 5'10"	205cm x 188cm/6'9" x 6'2"	205cm x 177cm/6'9" x 5'10"
or one Single	188cm x 71cm/6'2" x 2'4"	177cm x 71cm/5'10" x 2'4"	188cm x 71cm/6'2" x 2'4"	177cm x 71cm/5'10" x 2'4"
and one Single	188cm x 71cm/6'2" x 2'4"	188cm x 71cm/6'2" x 2'4"	188cm x 71cm/6'2" x 2'4"	188cm x 71cm/6'2" x 2'4"
Rear Double				190cm x 137cm/6'3" x 4'6"
Side Single		180cm x 66cm/5'11" x 2'2"	180cm x 66cm/5'11" x 2'2"	
Optional Bunk		172cm x 56cm/5'8" x 1'10"	172cm x 56cm/5'8" x 1'10"	

*Estimated weight. †Front double bed sizes quoted with wrap round seating.
 ††Note on awning sizes: Due to the varying awning designs and sizes the awning sizes given are approximate only. Specific awning sizes must be confirmed by your dealer or the awning manufacturer prior to purchase.

FEATURES

Exterior

New for 2004

- New glacier white exterior
- New restyled GRP back panel with round rear light clusters
- Seitz one piece entrance door with opening window and integral blind and flyscreen
- New graphic scheme
- Seitz S4 framed flush fitting window system to side and rear windows with new colour co-ordinated frames
- External gas bottle compartment light moulded into a restyled cover
- AL-KO Euro hitch with assisted handbrake
- New polished 13" alloy wheel (twin axle models)
- Underslung spare wheel carrier
- New curved high level side marker lights
- Barbecue point with isolation valve
- GRP front panel with 3 opening windows
- Front double glazed windows with concealed fittings
- Heki large tilting panoramic roof window with flynet and blind (2 in 625GL)
- Exterior access battery box with mains inlet and aerial input socket (battery not included)
- External access heated locker (not 625GL)
- External access door under fixed bed (625GL)
- Gas bottle storage with gas strut supported door
- Lined external access locker with 230v external socket
- AL-KO lightweight galvanised steel chassis with Euro-Axle
- Heavy duty corner steadies
- 15" alloy wheels (single axle models)
- Awning channel on both sides of caravan
- Flush fitting awning light to both sides
- Side direction indicator repeater lights
- Reversing lights
- High level brake light
- Status TV/FM aerial and booster
- Telescopic radio aerial with built in amplifier
- Heavy duty stainless steel grab handles to front, rear and gas locker door
- Smooth aluminium single joint side panels
- Low level rubbing stakes with awning skirt channel
- Winter fridge vent covers
- Door retainer
- Fixing points for rear mounted cycle rack (model specific)

Body Structure

- 44mm bonded floor with styrofoam insulation core
- 25mm bonded side walls with polystyrene insulation core
- 32mm fully bonded one-piece roof (except front sweep)

Electrical

- Fully protected mains electric system with at least four internal and 1 external 230v mains sockets
- Electrical control panel over exterior door
- Exclusive 12v downlights
- Colour co-ordinated electrical sockets, switches and light fittings
- Colour co-ordinated mains lights with dimmer control
- Colour co-ordinated downlighters in kitchen
- Colour co-ordinated halogen lighting in washroom
- Colour co-ordinated 12v halogen ceiling lights
- Colour co-ordinated adjustable 12v halogen reading lights
- Low level floor courtesy and night lighting
- Two TV stations with 230v/12v sockets and coax/aerial connection
- ESM 2004 power supply unit
- 12v electrical system with two 12v sockets and plugs
- Programmable timer thermostat for wet central heating system (550GL & 625GL only)
- Omnivent 3 speed fan and skylight
- 25 metre mains hook-up lead
- Concealed radio/CD player with speakers and CD storage facility
- Key fob operated entry light 12v isolation
- Courtesy light in wardrobe and cocktail cabinet (model specific)

Washroom

New for 2004

- New washroom wall covering
- New multi position 'Mini Heki' clear skylights with blind and flyscreen (not 625GL)
- Fully fitted luxury washroom with vanity unit and sealed shower cubicle
- Thetford cassette toilet with independent tank and electric flush
- Chrome finish shower equipment
- Microswitched chrome finish lever mixer tap
- Opening window

Heating and Plumbing

New for 2004

- New dual fuel gas and mains 800W electric storage water heater (495SL & 525SL only)

- Bulkhead mounted gas regulator
- Dual fuel 3kw gas space heater complete with 2kw electric ducted blown air heating (495SL & 525SL only)
- Alde wet central heating systems (550GL & 625GL only)
- Water system with internal Shurflo pump system
- Mains water connection facility
- Internal 9 gallon water tank with filling pump and level gauge
- Grade 2 classification for thermal heating and insulation
- Inboard semi-rigid piped fresh water system
- Large bore underslung rigid waste pipes

Kitchen

New for 2004

- Recessed stainless steel bowl with pillar tap, removable draining board and chopping board
- New 86 litre 7 series power fridge (not 525SL)
- New 135 litre 7 series power fridge 525SL only)
- Dual fuel hob with 800w electric hot plate and three gas electronic ignition burners incorporating flame failure protection
- Microwave oven (495SL & 550GL only)
- Flush fitting stainless steel thermostatic oven with grill and pan storage
- L shaped kitchen with swivel TV facility and sliding room divider storage unit (625GL)
- Safety hob lid with cut out feature
- Heat resistant work surface
- Moulded cutlery drawer on smooth steel runners
- Utensil rack (model specific)
- Pull out storage baskets (model specific)

Lounge and Dining Area

New for 2004

- Nordica green with optional Nordica Orange upholstery fabric
- Aluminium framed double bed tops (625GL)
- Long front beds 1920mm (6'3") (model specific)
- Wrap round seating with occasional coffee table or optional chest of drawers
- Worktop laminate in Caramel Birds Eye woodgrain
- Super quality domestic style sprung seats and backrests
- Freestanding table with dedicated storage location
- Ash framed furniture doors with inlaid cherry wave woodgrain panels
- Corner display units to front seating area (model specific)
- Drop down front side bed flaps
- Beech sprung slats to all seats for improved comfort and cushion support
- Ergonomically adjusted backrests to front beds
- Split front base cushions for easy bed make up
- Cocktail cabinet with courtesy light (model specific)
- Backrest ventilation boards
- Rolled edged ash/hardwood mouldings to worktops and tables
- Curtains with tie-backs
- Curtain storage for centre dinette curtain (model specific)
- Twin curtain tracks for improved hanging presentation and ease of use
- Front roof lockers
- Luxury wall to wall fitted carpet
- Four scatter cushions
- Clock and barometer

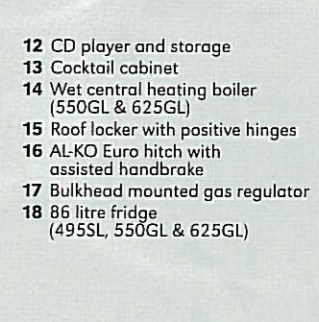
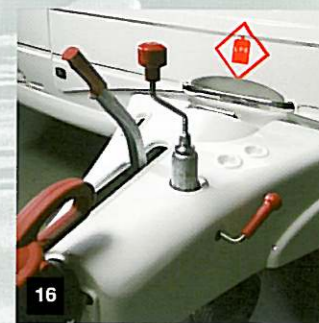
Fittings & Equipment

New for 2004

- Multi position 'Mini Heki' clear skylights with blind and flyscreen
- Multi directional roof lights with sliding blind and flynet
- Night latch ventilation to all windows
- Cassette flyscreen & blinds to all windows
- Spare wheel and tyre (steel rimmed on twin axles)
- AL-KO side mounted scissor jack
- Removable hanging rail in shower (model specific)
- Caravan entrance step
- Entrance mat with embroidered logo in brush out tray
- Portable wheeled waste water container
- Smoke alarm
- Pull out roller slatted beds
- Domestic style cabinet hinges
- Bunk ladder (where bunks provided)
- Smooth operation steel drawer runners
- Isolation taps to all gas appliances

Security & Safety

- AKS 2004 AL-KO stabiliser
- Identity number etched to windows and caravan chassis
- Lockable rear corner steadies (lock not supplied)
- Concealed security data chip within caravan construction
- Alarm system with passive infra red and tilt sensors with easy to use key fob operation
- Single key operated locks
- All models comply with European standards



- 1 Round rear light cluster
- 2 Reclining front seats
- 3 New style kitchen pillar tap
- 4 Underslung spare wheel carrier
- 5 Multi position 'Mini Heki' skylight
- 6 Alloy wheel
- 7 Omnivent 3 speed fan
- 8 135 litre fridge (525SL only)
- 9 Exterior wet locker
- 10 Front occasional table (with wraparound cushions)
- 11 Heki rooftop
- 12 CD player and storage
- 13 Cocktail cabinet
- 14 Wet central heating boiler (550GL & 625GL)
- 15 Roof locker with positive hinges
- 16 AL-KO Euro hitch with assisted handbrake
- 17 Bulkhead mounted gas regulator
- 18 86 litre fridge (495SL, 550GL & 625GL)

Your Local Dealer



Individually styled ~ beautifully built

Bessacarr Caravans, Dunswell Road,
Cottingham, East Yorkshire HU16 4JX.
Tel: 01482 847332 Fax: 01482 841042
e-mail: enquiry@swiftleisure.co.uk
web site: www.bessacarrcaravans.co.uk

A MEMBER OF THE SWIFT GROUP



INVESTOR IN PEOPLE



This brochure does not constitute an offer by Swift Group Limited (Swift). Swift reserves the right to alter specifications and prices at any time as materials and conditions demand. Distributors and dealers sell Bessacarr products on their own account and not as agents of Swift. Accordingly, they have no authority to bind Swift or to make any representation or undertaking whatsoever on behalf of Swift.

The touring caravans described in this brochure are designated by their model year. The model year runs from 1 September to 31 August and the despatch of 2004 models will have commenced on or after 1 September 2003.

Issued September 2003

Cars courtesy of Volvo Cars UK Limited