



# sterling caravans 2004



BOOK YOURS TODAY! WE'VE INTRODUCED THE NEWEST RANGE OF  
STERLING CARAVANS FOR 2004. FROM THE NEWEST TO THE MOST  
POPULAR, WE'VE GOT YOU COVERED.

THE NEWEST RANGE OF CARAVANS IS NOW AVAILABLE. FROM THE  
NEWEST TO THE MOST POPULAR, WE'VE GOT YOU COVERED.

THE NEWEST RANGE OF CARAVANS IS NOW AVAILABLE. FROM THE  
NEWEST TO THE MOST POPULAR, WE'VE GOT YOU COVERED.

THE NEWEST RANGE OF CARAVANS IS NOW AVAILABLE. FROM THE  
NEWEST TO THE MOST POPULAR, WE'VE GOT YOU COVERED.

THE NEWEST RANGE OF CARAVANS IS NOW AVAILABLE. FROM THE  
NEWEST TO THE MOST POPULAR, WE'VE GOT YOU COVERED.

THE NEWEST RANGE OF CARAVANS IS NOW AVAILABLE. FROM THE  
NEWEST TO THE MOST POPULAR, WE'VE GOT YOU COVERED.

THE NEWEST RANGE OF CARAVANS IS NOW AVAILABLE. FROM THE  
NEWEST TO THE MOST POPULAR, WE'VE GOT YOU COVERED.

THE NEWEST RANGE OF CARAVANS IS NOW AVAILABLE. FROM THE  
NEWEST TO THE MOST POPULAR, WE'VE GOT YOU COVERED.

THE NEWEST RANGE OF CARAVANS IS NOW AVAILABLE. FROM THE  
NEWEST TO THE MOST POPULAR, WE'VE GOT YOU COVERED.

THE NEWEST RANGE OF CARAVANS IS NOW AVAILABLE. FROM THE  
NEWEST TO THE MOST POPULAR, WE'VE GOT YOU COVERED.

THE NEWEST RANGE OF CARAVANS IS NOW AVAILABLE. FROM THE  
NEWEST TO THE MOST POPULAR, WE'VE GOT YOU COVERED.

THE NEWEST RANGE OF CARAVANS IS NOW AVAILABLE. FROM THE  
NEWEST TO THE MOST POPULAR, WE'VE GOT YOU COVERED.

THE NEWEST RANGE OF CARAVANS IS NOW AVAILABLE. FROM THE  
NEWEST TO THE MOST POPULAR, WE'VE GOT YOU COVERED.

THE NEWEST RANGE OF CARAVANS IS NOW AVAILABLE. FROM THE  
NEWEST TO THE MOST POPULAR, WE'VE GOT YOU COVERED.

THE NEWEST RANGE OF CARAVANS IS NOW AVAILABLE. FROM THE  
NEWEST TO THE MOST POPULAR, WE'VE GOT YOU COVERED.

THE NEWEST RANGE OF CARAVANS IS NOW AVAILABLE. FROM THE  
NEWEST TO THE MOST POPULAR, WE'VE GOT YOU COVERED.

experience  
the world...

Bursting with Scandinavian style and packed with exciting new features and layouts across all ranges, the trend-setting Sterling range offers all-new Eccles and Eccles Elite ranges for 2004. An outstanding specification includes new wider bodyshells, stylish alloy wheels, sumptuous soft furnishings, and a host of innovative new layouts. The entry level Europa builds on its successful redesign last year by adding further features and two new layouts.

The three distinctive ranges are designed and built with the utmost care, using a winning combination of traditional craftsmanship and the latest computer technology. Peace of mind comes as part of the Sterling package, with the market-leading SuperCare aftersales service and 3 year SuperSure manufacturer's warranty, designed to make the ownership of your new tourer enjoyable and trouble-free.

Sterling has an active owners club, open to all purchasers of Sterling tourers. Full details can be found by logging onto [www.sterlingcaravanowners.co.uk](http://www.sterlingcaravanowners.co.uk)



All Sterling models have been certified by the National Caravan Council for compliance with stringent European Standards, British Legislation and industry set Codes of Practice specifically relating to health and safety issues. The approval process covers the testing and inspection of critical areas of the product from fire safety, weights and dimensions, to gas, electrics and ventilation. Every Sterling caravan carries the "NCC Approved Caravan" badge. The NCC also conduct unannounced inspections at the Sterling factory to ensure continued compliance. NCC Approval gives you peace of mind that your caravan is legal and safe.

elegant  
exterior



## Europa

The Europa has a distinctive new look for 2004 and cleverly combines style, safety and security. A sleek white bodyshell and colourful graphics belie the caravan's price bracket, whilst an AKS stabiliser comes as standard to facilitate safer towing. With new features such as a spare wheel and tyre on a handy underslung carrier, which makes room for a gas regulator on the bulkhead, and a heavy duty jockey wheel, the new Europa offers quality touring at an affordable price.

elegant  
exterior



## Eccles

Sterling have completely redesigned the Eccles range for 2004, introducing exciting new layouts and scores of new features. Stepping up its already impressive external specification, the Eccles offers an all-new glacier white bodyshell and reshaped front panel which boasts special shaped windows. A new GRP rear panel offers a sleek, strong finish and modern light clusters. Blue and gold graphics, polished alloy wheels and new styled ABS wheel spats all make for a truly stunning exterior.

elegant  
exterior



## Eccles Elite

The critically-acclaimed Sterling Eccles Elite range also sees a dramatic and total redesign for 2004. The distinctive, modern exterior has been extensively updated and upgraded with a white bodyshell giving a fresh new look. Colourful new graphics, restyled alloy wheels and stylish new ABS wheel spats complete the overall appearance of style, elegance, and attention to detail. A sophisticated new remote control alarm is operated from a simple car style key fob, for added security.

relax in  
comfort

## Europa

Inspired by contemporary, Scandinavian design, expert interior designers have created a unique and trend-setting style for the Europa range. Pale Locarno Apple wood and fashionable cream and peach fabrics combine with state-of-the-art appliances and innovative layouts to provide high quality, modern and chic accommodation.



Europa 520



Europa 500



relax in  
comfort



Eccles Opal



Eccles Emerald

## Eccles

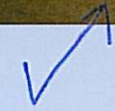
Creating perfect synergy between style and quality, the Eccles range offers a host of practical and luxurious features. A fresh, light atmosphere is produced by the pale wood, modern furnishings and multi-positioned mini and large Heki rooflights which flood the caravan with sunlight. Elegantly curving lockers provide a stylish, streamlined look, and offer plenty of storage space.



relax in  
comfort



Eccles Elite Searcher



## Eccles Elite

Continuing this unique, distinctive and chic continental theme, the interior of the Eccles Elite is packed with style and practicality. Softly curving wardrobes and lockers combine with luxurious carpets and curtains to give a sumptuous feel. A combination of sprung and foam upholstery provides comfort and support and an attractive blue and cream soft furnishing scheme creates an aesthetically pleasing environment. Colour co-ordinated fixtures and fittings add to the stylish appeal.



Eccles Elite Overlander



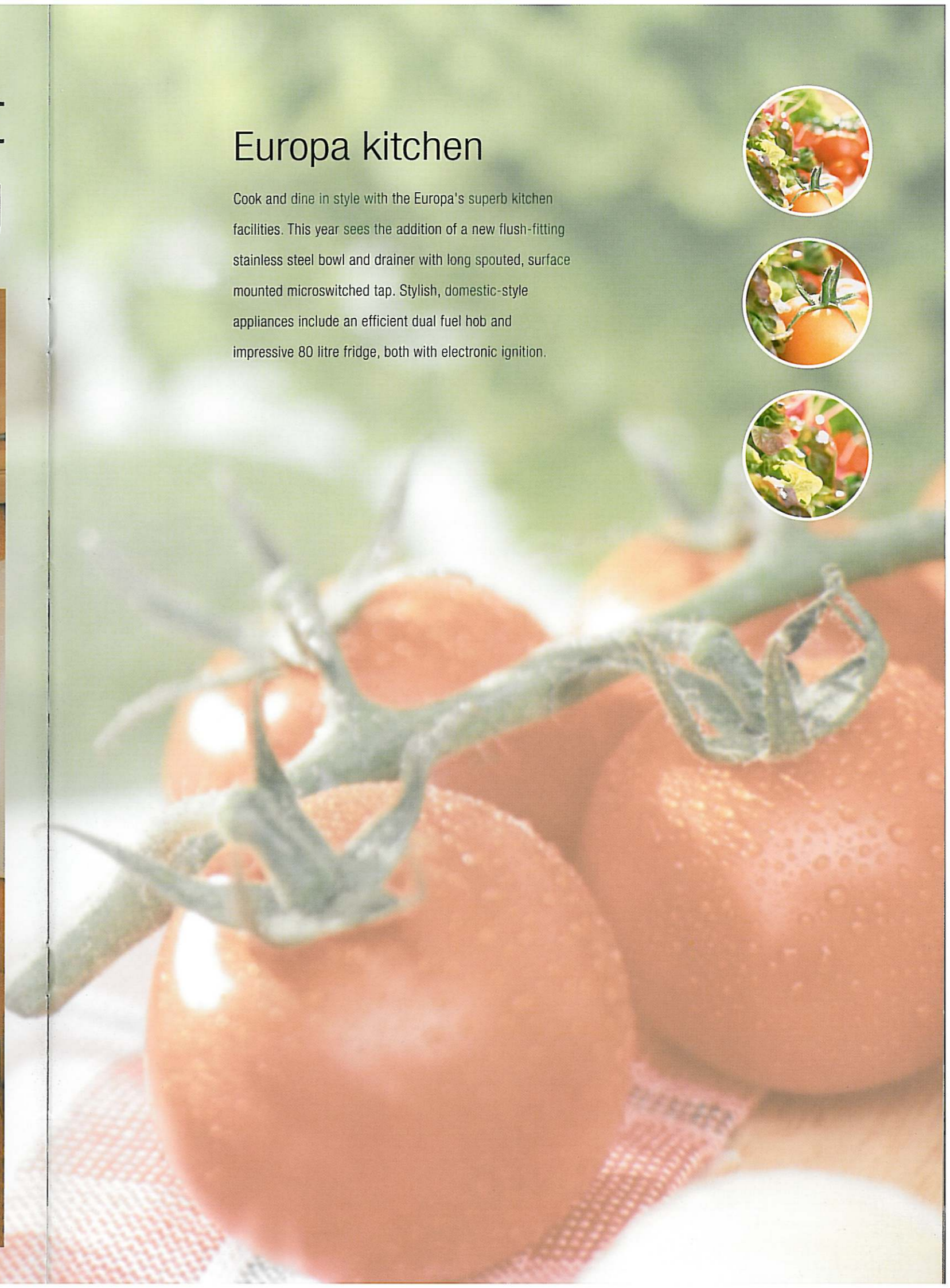
# elegant dining



Europa 495

## Europa kitchen

Cook and dine in style with the Europa's superb kitchen facilities. This year sees the addition of a new flush-fitting stainless steel bowl and drainer with long spouted, surface mounted microswitched tap. Stylish, domestic-style appliances include an efficient dual fuel hob and impressive 80 litre fridge, both with electronic ignition.





## Eccles kitchen

The Eccles range offers an elegant freestanding table and spacious seating area. And the kitchen itself boasts a wealth of new luxurious and practical features such as electronic ignition power fridge, dual fuel hob, and stainless steel bowl with chopping board and drainer which can be removed when not in use. This innovative feature, coupled with an extended dropdown work surface in some models, creates more workspace than ever before.



Eccles Onyx

elegant  
dining



Eccles Amber & Diamond



## Eccles Elite kitchen

Setting new standards in kitchen and dining equipment, the new Eccles Elite offers home-from-home comfort and style. The same clever workspace arrangement as the Eccles makes room for a microwave oven and 135 litre fridge (Searcher only). Storage is offered in the form of pull-out baskets and spacious cupboards. A flush-fitting silver steel thermostatic oven with grill and pan storage has a dual fuel hob with cut out safety feature.

# elegant dining



Eccles Elite Searcher



Eccles Elite Searcher



Sterling caravans provide superb, state-of-the-art washroom facilities with separate showers in some models and practical vanity units. Sterling washrooms are spacious and light and provide all mod cons as well as offering plenty of storage for toiletries.

## Europa washroom

Even the entry level Europa offers luxuries such as stylish chrome finish shower equipment, microswitched chrome finish lever mixer tap, and Thetford cassette toilet with independent tank. Water is heated by an efficient dual fuel water heater.



Europa 495 & 500



Europa 460, 520 & 525

spacious  
bathing



# Eccles washroom

Some models offer a pelmet shelf with light, and access to handy wardrobe shelving which is located behind the vanity mirror. Shower areas are spacious, and colour co-ordinated halogen lighting is contemporary and stylish to suit the overall look.



Eccles Amethyst, Jewel, Sapphire & Opal



Eccles Onyx



Eccles Topaz, Emerald & Moonstone

spacious  
bathing



## Eccles Elite washroom

Moving up the range, new washroom layouts are more spacious than ever and enjoy luxurious sealed, circular shower cubicles with chrome finish equipment, large vanity bowls, windows and electric flush Thetford cassette toilets. Stylish new wallboard adds to the domestic style luxury.



Eccles Elite Trekker & Wayfarer



Eccles Elite Searcher

spacious  
bathing

## Europa bedroom

With no less than eight stylish and innovative models to choose from in the Europa range, there is a layout and bed arrangement to suit everyone. Layouts include fixed rear beds with large centre or rear washrooms, or full length front beds and rear bunks, which, in the new 540, are hinged to reveal handy 'garage' storage space.



peaceful  
slumber



Europa 495



Europa 540



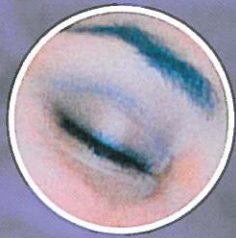
## Eccles bedroom

Spacious and comfortable, the Eccles range offers several superb sleeping options. Whether you have a large family or travel alone, there is a layout to suit. Interior designers and skilled craftsmen have created sumptuous living areas which cleverly and easily convert to form ample sleeping accommodation, which also incorporates spacious storage solutions.



peaceful  
slumber





## Eccles Elite bedroom

The high standards of furniture provided by Sterling ensure that every night spent in an Eccles Elite will be a peaceful one. Comfort is top of the list with double beds offering robust aluminium frames, and all beds offering cantilever action hinged, slatted bed tops which ensure a good night's sleep, as well as offering easy access to under-bed storage.

peaceful  
slumber



# features



1



2



3



4



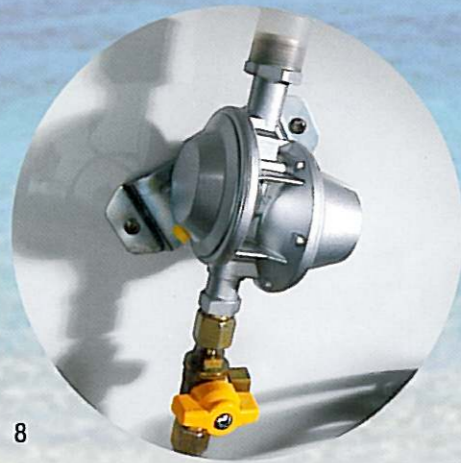
5



6



7



8



9



10



11



12

1. Fridge with full width freezer and electronic ignition
2. Electrical control panel over door (Eccles and Eccles Elite)
3. Luxury loose fit carpet (Eccles and Eccles Elite)
4. Provision for sound system, with fitted speakers and aerial for easy fitting
5. Cocktail cabinet with courtesy light
6. Dual fuel hob with 800w electric hot plate and three gas burners incorporating flame failure protection and electronic ignition
7. Microwave oven (Eccles Elite)
8. Bulkhead mounted gas regulator
9. AKS 2004 AL-KO stabiliser
10. Round rear light cluster (Eccles and Eccles Elite)
11. Underslung spare wheel carrier
12. Multi position 'Mini Heki' clear skylights with blind and flyscreen (model specific)
13. Kitchen utensil rack (model specific)



13

# Eccles Elite

## Features

### Exterior

#### New for 2004

- New glacier white exterior
- Restyled GRP 3 window front with high level marker lights
- Restyled GRP back panel incorporating high level spoiler, high level brake light and round rear light cluster
- Flush fitting aluminium framed windows
- Restyled wheelspat
- New design 14" polished alloy wheels
- Underslung spare wheel carrier
- Barbecue point with isolation valve
- New curved high level side marker lights
- External gas bottle compartment light moulded into a restyled cover
- New body coloured front gutter mould
- AL-KO Euro hitch with assisted handbrake
- Heki large tilting panoramic roof window with flynet and blind (2 in Searcher and Explorer)
- Exterior door with window, blind and moulded interior door liner with integral magazine storage
- External access door under fixed bed (Searcher)
- Exterior access battery box with mains inlet and aerial input socket (battery not included)
- Gas bottle storage with gas strut supported door
- Lined external access locker with 230v external socket
- Smooth aluminium single joint side panels
- AL-KO lightweight galvanised steel chassis with Euro-Axle
- Heavy duty corner steadies
- Awning channel on both sides of caravan
- Flush fitting awning light
- External gas bottle compartment light
- Reversing light
- Status TV/FM aerial and booster
- Removable fridge vents for easy maintenance and inspection
- Quick release door retainer
- Fixing points for rear mounted cycle rack (model specific)

### Lounge and Dining Area

#### New for 2004

- Larger curved upper lockers with integrated front corner light mouldings
- Woodblock effect vinyl floor covering
- Aluminium framed fixed double bed tops (Searcher, Explorer)
- 'Locarno Apple' colour furniture with co-ordinated handles
- Worktop laminate in Maple woodgrain
- 'Fellini' chenille upholstery fabric
- Split front base cushions for easy bed make up
- Super quality domestic style sprung seats and backrests
- Long front beds 1920mm (6'3 1/2") (model specific)
- Chest of drawers with occasional table (model specific)
- Cantilever hinged bed tops sized for easy access
- Drop down front side bed flaps
- Backrest ventilation boards
- Cocktail cabinet with courtesy light
- Luxury loose fit carpet
- Curtain poles and curtains with integral voiles and tie-backs
- Curtain storage for centre dinette curtain (model specific)
- Scatter cushions
- Clock
- Rolled edged hardwood mouldings to worktops and tables
- Front roof lockers
- Freestanding table with dedicated storage location
- Optional 6 berth layout (Trekker)

### Body Structure

- 25mm bonded side walls with polystyrene insulation core
- 32mm semi bonded roof with polystyrene core
- 44mm bonded floor with styrofoam insulation core

### Fittings and Equipment

#### New for 2004

- Multi position 'Mini Heki' clear skylights with blind and flyscreen (model specific)
- Cassette flyscreens to all windows (concertina to sides and rear)
- Concertina partition doors to rear bedroom models (model specific)
- Multi directional roof lights with sliding blind and flynet
- Night latch ventilation to all windows
- Entrance mat with embroidered logo in brush out tray
- Pull out roller slatted beds
- Full height exterior door flyscreen
- Portable wheeled waste water container
- Smoke alarm

- Bunk ladder (where bunks provided)
- Caravan entrance step

#### AL-KO side mounted scissor jack

- Domestic style cabinet hinges
- Removable hanging rail in shower (model specific)
- Isolation taps to all gas appliances
- Smooth operation steel drawer runners
- Steel rimmed spare wheel and tyre

### Kitchen

#### New for 2004

- Recessed stainless steel bowl with pillar tap, removable draining board and chopping board
- Microwave oven
- 135 litre '7 series' electronic fridge/freezer (Searcher)
- 86 litre '7 series' electronic power fridge
- Dual fuel hob with 800w electric hot plate and three gas burners incorporating flame failure protection and electronic ignition
- Flush fitting silver steel thermostatic oven with grill and pan storage
- Safety hob lid with cut out feature
- L shaped kitchen with swivel TV facility and worktop extension (Searcher)
- Pull out storage baskets (model specific)
- Utensil rack (model specific)
- Heat resistant work surface
- Moulded cutlery drawer on smooth steel runners

### Washroom

#### New for 2004

- New fully fitted luxury washroom with vanity unit and sealed shower cubicle
- Thetford cassette toilet with independent tank and electric flush
- Opening window
- Chrome finish shower equipment
- Microswitched chrome finish lever mixer tap

### Heating and Plumbing

#### New for 2004

- New dual fuel gas and mains 800W electric storage water heater
- Bulkhead mounted gas regulator
- Up rated 12 litre/minute submersible pumps
- Dual fuel 3kw gas space heater complete with 2kw electric ducted blown air heating
- Grade 2 classification for thermal heating and insulation
- Internal 9 gallon water tank with filling pump and level gauge
- Inboard semi-rigid piped fresh water system
- Large bore underslung rigid waste pipes

### Electrical

#### New for 2004

- New electrical control panel over exterior door
- New electrical sockets and switches
- Omnivent 3 speed fan and skylight
- Fully protected mains electric system with four 230v mains sockets
- ESM 2004 power supply unit incorporating 12 amp switchmode charger/transformer
- 12v electrical system with one (two Wayfarer and Trekker) 12v socket and plug
- TV station with 230v/12v sockets and coax/aerial connection
- Two television station points (Wayfarer, Trekker, Explorer)
- Colour co-ordinated downlighters in kitchen
- Colour co-ordinated 12v halogen ceiling lights
- Colour co-ordinated adjustable 12v halogen reading lights
- Colour co-ordinated halogen lighting in washroom
- Colour co-ordinated mains lights
- Fitted speakers, wiring, housing and aerial for easy fitting of a sound system
- 25 metre mains hook-up lead

### Safety and Security

#### New for 2004

- New lockable rear corner steadies (lock not supplied)
- Alarm system with passive infra red and tilt sensor with key fob operation
- AKS 2004 AL-KO stabiliser
- Concealed security data chip within caravan construction
- Identity number etched to windows and caravan chassis
- Single key operated locks
- All models comply with European standards

# Eccles

## Features

### Exterior

#### New for 2004

- New glacier white exterior
- Restyled GRP 3 window front with high level marker lights
- Restyled GRP back panel incorporating high level spoiler, high level brake light and round rear light cluster
- Flush fitting aluminium framed windows
- Restyled wheelspats
- New design 14" polished alloy wheels
- Underslung spare wheel carrier
- External gas bottle compartment light moulded into a restyled cover
- New increased body width of 2.23m/7'4"
- AL-KO Euro hitch with assisted handbrake
- Heavy duty corner steadies
- Barbecue point with isolation valve
- New body colour front gutter mould
- Heki large tilting panoramic roof window with flynet and blind (2 in Onyx)
- Exterior door with window, blind and moulded interior door liner with integral magazine storage
- Exterior access battery box with mains inlet and aerial input socket (battery not included)
- External access door under fixed bed (Opal and Jewel)
- External access heated locker (model specific)
- Gas bottle storage with gas strut supported door
- Lined external access locker with 230v external socket
- Smooth aluminium single joint side panels
- AL-KO lightweight galvanised steel chassis with Euro-Axle
- Awning channel on both sides of caravan
- Flush fitting awning light
- Reversing light
- New curved high level side marker lights
- Status TV/FM aerial and booster
- Removable fridge vents for easy maintenance and inspection
- Fixing points for rear mounted cycle rack (model specific)
- Quick release door retainer

### Lounge and Dining Area

#### New for 2004

- Large curved upper lockers with integrated front corner light mouldings
- Messina Gold upholstery fabric
- Woodblock effect vinyl floor covering
- Aluminium framed double bed tops (model specific)
- 'Locarno Apple' colour furniture with co-ordinated handles
- Worktop laminate in Maple woodgrain
- Long front beds 1920mm (6'3 1/2") (model specific)
- Large 'L' shaped front lounge (model specific)
- Chest of drawers with occasional table (model specific)
- Cantilever hinged bed tops sized for easy access
- Split front base cushions for easy bed make up
- Super quality domestic style sprung seats and backrests
- Backrest ventilation boards
- Drop down front side bed flaps
- Freestanding table with dedicated storage location
- Front roof lockers
- Cocktail cabinet with courtesy light
- Clock
- Rolled edged hardwood mouldings to worktops and tables
- Luxury loose fit carpet
- Curtain poles and curtains with integral voiles and tie-backs
- Curtain storage for centre dinette curtain (model specific)
- Scatter cushions

### Body Structure

- 44mm bonded floor with styrofoam insulation core
- 32mm semi bonded roof with polystyrene core
- 25mm bonded side walls with polystyrene insulation core

### Fittings and Equipment

#### New for 2004

- Multi position 'Mini Heki' clear skylights with blind and flyscreen (model specific)
- Cassette flyscreens to all windows (concertina on sides and rears)
- Concertina partition doors to rear bedroom models (model specific)
- Steel rimmed spare wheel and tyre
- Multi directional roof lights with sliding blind and flynet
- Night latch ventilation to all windows
- Full height exterior door flyscreen
- Caravan entrance step

- Entrance mat with embroidered logo in brush out tray
- Domestic style cabinet hinges
- Pull out roller slatted beds
- Smoke alarm
- Isolation taps to all gas appliances
- Removable hanging rail in shower (model specific)
- Smooth operation steel drawer runners
- Bunk ladder (where bunks provided)

### Kitchen

#### New for 2004

- Recessed stainless steel bowl with pillar tap, removable draining board and chopping board
- Microwave oven provision (Diamond, Amber)
- 86 litre '7 series' electronic power fridge (Diamond, Amber)
- New 77 litre '7 series' electronic power fridge (model specific)
- Dual fuel hob with 800w electric hot plate and three gas burners incorporating flame failure protection & electronic ignition
- Flush fitting Silver Steel thermostatic oven with grill and pan storage
- Safety hob lid with cut out feature
- L shaped kitchen with swivel TV facility and sliding room divider storage unit (model specific)
- Extended work surface in kitchen (model specific)
- Heat resistant work surface
- Pull out storage baskets (model specific)
- Moulded cutlery drawer on smooth steel runners
- Utensil rack (model specific)

### Washroom

#### New for 2004

- New fully fitted luxury washroom with sealed shower cubicle (not Onyx)
- Thetford cassette toilet with independent tank and electric flush
- Access to wardrobe shelving from vanity mirror door (model specific)
- Microswitched chrome finish lever mixer tap
- Chrome finish shower equipment
- Large window in centre washrooms (model specific)

### Heating and Plumbing

#### New for 2004

- New dual fuel gas and mains electric storage water heater
- Bulkhead mounted gas regulator
- Up rated 12 litre/minute submersible water pump
- Dual fuel 3kw gas space heater complete with 2kw electric ducted blown air heating
- Grade 2 classification for thermal heating and insulation
- Inboard semi-rigid piped fresh water system
- Large bore underslung rigid waste pipes

### Electrical

#### New for 2004

- New electrical control panel over exterior door
- New electrical sockets and switches
- Fully protected mains electric system with three 230v mains sockets
- TV station with 230v/12v sockets and coax/aerial connection
- 12v electrical system with one 12v socket and plug
- Colour co-ordinated 12v halogen ceiling lights
- Colour co-ordinated adjustable 12v halogen reading lights
- Colour co-ordinated halogen lighting in washroom
- Colour co-ordinated downlighters in kitchen
- Colour co-ordinated mains lights
- ESM 2000 power supply unit incorporating 12 amp switchmode charger/transformer
- Omnivent 3 speed fan and skylight
- Fitted speakers, wiring, housing and aerial for easy fitting of a sound system
- 25 metre mains hook-up lead

### Safety and Security

- AKS 2004 AL-KO stabiliser
- Concealed security data chip within caravan construction
- Identity number etched to windows and caravan chassis
- Single key operated locks
- All models comply with European standards

# Europa

## Features

### Exterior

#### New for 2004

- New glacier white exterior
- Underslung spare wheel carrier
- GRP front panel with 3 opening windows
- Double glazed opening windows with concealed fixings
- ABS rear lower panel with wrap round rear light clusters
- Heki large tilting panoramic roof window with flynet and blind (2 in 490 - only 1 last year)
- Exterior door with window and blind
- Exterior access battery box with mains inlet (battery not included)
- Gas bottle storage with gas strut supported door
- Lined external access locker (model specific)
- Smooth aluminium single joint side panels
- AL-KO lightweight galvanised steel chassis with Euro-Axle
- Gas strut assisted handbrake
- 14" wheels with trims
- Awning channel on both sides of caravan
- Awning light
- High level side marker lights
- Reversing light
- High level brake light
- Status TV/FM aerial and booster
- Quick release door retainer
- Removable fridge vents with integral fly mesh for easy maintenance and inspection
- Fixing points for rear mounted cycle rack (model specific)

### Lounge and Dining Area

- 'Locarno Apple' colour furniture with co-ordinated handles
- Worktop laminate in Maple woodgrain
- 'Mississippi' chenille upholstery fabric
- Super quality domestic style sprung seats and backrests
- Curtain poles and curtains with integral voiles and tiebacks
- Scatter cushions
- Luxury fitted carpet
- Large 'L' shaped front lounge (model specific)
- Long front beds 1920mm (6'3 1/2") (model specific)
- Chest of drawers with occasional table (model specific)
- Freestanding table with dedicated storage location
- Dedicated permanent bunk bed featuring fixed ladder, lockers and lighting (540 Only)
- Two table storage compartments (540 only)
- Aircraft style upper locker doors
- Front roof lockers
- Cocktail cabinet
- Cantilever hinged bed tops sized for easy access
- Drop down front side bed flaps
- Front ventilation boards
- Split front base cushions for easy bed make up
- Rolled edged ash/hardwood mouldings to worktops and tables
- Clock
- Curtain storage for centre dinette curtain (model specific)

### Body Structure

- 25mm bonded sidewalls with polystyrene insulation core
- 32mm Semi bonded roof with polystyrene core
- 44mm bonded floor with styrofoam insulation core

### Fittings and Equipment

#### New for 2004

- Steel rimmed spare wheel and tyre
- Multi-directional roof lights with sliding blind and flynet
- Cassette flyscreen to all windows
- Night latch ventilation to all windows
- Full height exterior door flyscreen
- Large exterior offside entry door into multifunction storage area, incorporating a unique hinged bunk base allowing full access (540 only)
- Storage area floor fixing eyelets, for securing large items (540 only)
- Smoke alarm

- Caravan entrance step

- Removable entrance mat
- Pull out roller slatted beds
- Bunk ladder (where bunks provided)
- Domestic style cabinet hinges
- Wooden partition doors to rear bedroom models (model specific)
- Isolation taps to all gas appliances
- Smooth operation steel drawer runners

### Kitchen

#### New for 2004

- New flush fitting stainless steel bowl and drainer with toughened glass lid
- Long spouted surface mounted microswitched chrome tap
- Dual fuel hob with 800w electric hot plate and three gas burners incorporating flame failure protection & electronic ignition
- Flush fitting Silver Steel thermostatic oven with grill and pan storage
- Safety hob lid with cut out feature
- 80 litre fridge with full width freezer and electronic ignition
- L shaped kitchen with swivel TV facility incorporating drop down extendible work surface (490)
- Heat resistant work surface
- Moulded cutlery drawer on smooth steel runners

### Washroom

- Fully fitted luxury washroom with sealed shower cubicle (model specific)
- Fully fitted luxury washroom with vanity unit and curtained shower area (model specific)
- Access to wardrobe shelving from vanity mirror door (model specific)
- Improved design hinged door to allow see through vision (model specific)
- Thetford cassette toilet with independent tank and manual flush
- Large window in centre washrooms
- Chrome finish shower equipment
- Microswitched chrome finish lever mixer tap
- Pelmet light and shelf (model specific)

### Heating and Plumbing

#### New for 2004

- New dual fuel gas and mains 800W electric storage water heater
- Bulkhead mounted gas regulator
- Dual fuel 3kw gas space heater complete with 2kw electric ducted blown air heating
- Grade 2 classification for thermal heating and insulation
- Inboard semi-rigid piped fresh water system
- Large bore underslung rigid waste pipes

### Electrical

#### New for 2004

- TV station with 230v/12v modern sockets and coax/aerial connection
- Fully protected mains electric system with two 230v mains sockets
- 12v electrical system with one 12v socket and plug
- 12 amp switchmode charger/transformer
- Electrical 12v distribution panel
- Colour co-ordinated mains lights
- Colour co-ordinated adjustable 12v halogen reading lights
- Colour co-ordinated 12v halogen ceiling lights
- Colour co-ordinated ellipse kitchen light
- Colour co-ordinated halogen lighting in washroom
- 25 metre mains hook-up lead

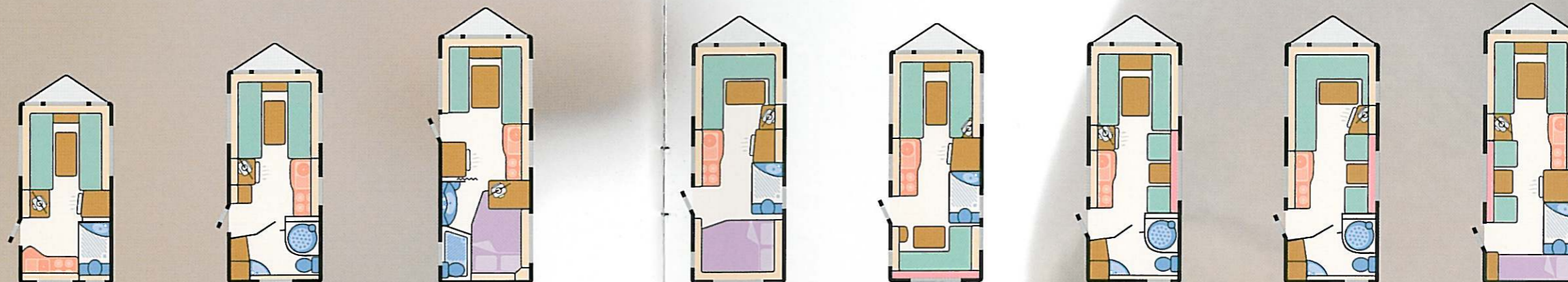
### Safety and Security

- AKS 2004 AL-KO stabiliser
- Identity number etched to windows and caravan chassis
- Concealed security data chip within caravan construction
- Single key operated locks
- All models comply with European standards

# Europa

## Technical Specification

- LIVING AREA
- FURNITURE
- KITCHEN
- WASHROOM
- FIXED BEDS
- LOCKERS
- BUNK BED



### Specification

	390	460	490	495	500	520	525	540
Berths	2	2	4	4	5	4	4	6
Number of Axles	1	1	1	1	1	1	1	1
Internal Length (at bed box height)	3.94m/12' 11"	4.61m/15' 2"	5.39m/17' 8"	5.23m/17' 2"	5.03m/16' 6"	5.23m/17' 2"	5.23m/17' 2"	5.50m/18' 1"
Overall Width	2.16m/7' 1"	2.16m/7' 1"	2.23m/7' 4"	2.23m/7' 4"	2.16m/7' 1"	2.16m/7' 1"	2.16m/7' 1"	2.23m/7' 4"
Overall Height (including Status TV aerial)	2.76m/9' 1"	2.76m/9' 1"	2.76m/9' 1"	2.76m/9' 1"	2.76m/9' 1"	2.76m/9' 1"	2.76m/9' 1"	2.76m/9' 1"
Overall Length	5.56m/18' 3"	6.24m/20' 6"	7.02m/23' 0"	6.86m/22' 6"	6.65m/21' 10"	6.86m/22' 6"	6.86m/22' 6"	7.13m/23' 5"
Mass in Running Order	946kg/18.6cwt	1023kg/20.1cwt	1163kg/22.9cwt	1124kg/22.1cwt	1100kg/21.7cwt	1120kg/22.0cwt	1115kg/21.9cwt	1177kg/23.2cwt
Essential Habitation Equipment Payload	90kg/1.8cwt	82kg/1.6cwt	82kg/1.6cwt	90kg/1.8cwt	90kg/1.8cwt	82kg/1.6cwt	82kg/1.6cwt	90kg/1.8cwt
Personal Effects Payload	96kg/1.9cwt	103kg/2.1cwt	131kg/2.6cwt	129kg/2.5cwt	137kg/2.6cwt	129kg/2.6cwt	129kg/2.6cwt	224kg/4.3cwt
Optional Equipment Payload	4kg/0.1cwt	4kg/0.1cwt	4kg/0.1cwt	4kg/0.1cwt	4kg/0.1cwt	4kg/0.1cwt	4kg/0.1cwt	4kg/0.1cwt
Maximum Technical Permissible Laden Mass	1136kg/22.4cwt	1212kg/23.9cwt	1380kg/27.2cwt	1347kg/26.5cwt	1331kg/26.2cwt	1335kg/26.3cwt	1330kg/26.2cwt	1495kg/29.4cwt
Awning A/A Dimension††	8.22m/26' 12"	8.90m/29' 2"	9.68m/31' 9"	9.52m/31' 3"	9.31m/30' 7"	9.52m/31' 3"	9.52m/31' 3"	9.79m/32' 1"
Tyre Size	195/70 r14 91	195/70 r14 91	175r14 99	175r14 99	195/70r14 95	175r14 99	175r14 99	175r14 99

### Bed Sizes

Front Double†	204cm x 190cm/6'8" x 6'3"	204cm x 190cm/6'8" x 6'3"	208cm x 167cm/6'10" x 5'6"	209cm x 139cm/6'10" x 4'7"	204cm x 190cm/6'8" x 6'3"	204cm x 180cm/6'8" x 5'11"	204cm x 139cm/6'8" x 4'7"	204cm x 180cm/6'8" x 5'11"
or One Single	190cm x 67cm/6'3" x 2'2"	190cm x 67cm/6'3" x 2'2"	190cm x 71cm/6'3" x 2'4"		190cm x 67cm/6'3" x 2'2"	190cm x 67cm/6'3" x 2'2"	190cm x 67cm/6'3" x 2'2"	180cm x 71cm/5'11" x 2'4"
and One Single	190cm x 67cm/6'3" x 2'2"	190cm x 67cm/6'3" x 2'2"	167cm x 71cm/5'6" x 2'4"		190cm x 67cm/6'3" x 2'2"	180cm x 67cm/5'11" x 2'2"	190cm x 71cm/6'3" x 2'4"	180cm x 71cm/5'11" x 2'4"
Rear Double			198cm x 138cm/6'6" x 4'6"	205cm x 138cm/6'8" x 4'6"	204cm x 119cm/6'8" x 3'11"			
Rear Bunk					198cm x 56cm/6'6" x 1'10"			
Side Single (offside)						180cm x 66cm/5'11" x 2'2"	180cm x 66cm/5'11" x 2'2"	180cm x 66cm/5'11" x 2'2"
Side Bunk						178cm x 56cm/5'10" x 1'10"	178cm x 56cm/5'10" x 1'10"	178cm x 56cm/5'10" x 1'10"
Rear Lower Bunk								182cm x 62cm/6'0" x 2'1"
Rear Upper Bunk								182cm x 60cm/6'0" x 2'0"

\*Estimated weight

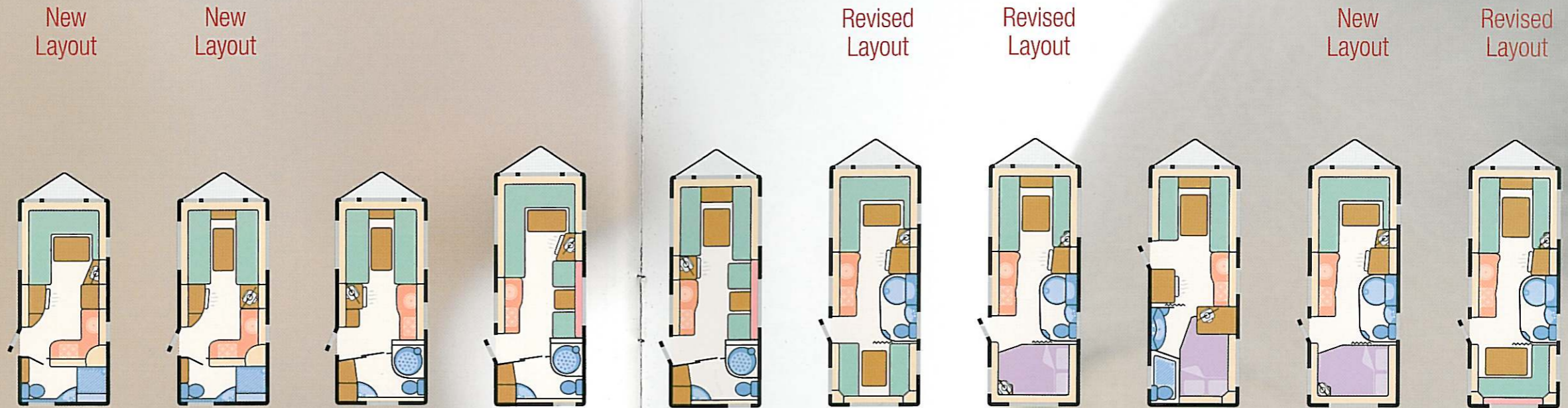
†Double bed sizes are quoted with wrap round seating.

††Note on awning sizes: Due to the varying awning designs and sizes the awning sizes given are approximate only. Specific awning sizes must be confirmed by your dealer or the awning manufacturer prior to purchase.

# Eccles

## Technical Specification

- LIVING AREA
- FURNITURE
- KITCHEN
- WASHROOM
- FIXED BEDS
- LOCKERS
- BUNK BED



## Specification

	AMBER	DIAMOND	TOPAZ	EMERALD	MOONSTONE	AMETHYST	JEWEL	ONYX	OPAL	SAPPHIRE
Berths	2	2	2	4	4	5	4	4	4	5
Number of Axles	1	1	1	1	1	1	1	1	1	1
Internal Length (at bed box height)	4.61m/15' 2"	4.61m/15' 2"	4.61m/15' 2"	5.23m/17' 2"	5.23m/17' 2"	5.39m/17' 8"	5.39m/17' 8"	5.39m/17' 8"	5.39m/17' 8"	5.39m/17' 8"
Overall Width	2.23m/7' 4"	2.23m/7' 4"	2.23m/7' 4"	2.23m/7' 4"	2.23m/7' 4"	2.23m/7' 4"	2.23m/7' 4"	2.23m/7' 4"	2.23m/7' 4"	2.23m/7' 4"
Overall Height (including Status TV aerial)	2.76m/9' 1"	2.76m/9' 1"	2.76m/9' 1"	2.76m/9' 1"	2.76m/9' 1"	2.76m/9' 1"	2.76m/9' 1"	2.76m/9' 1"	2.76m/9' 1"	2.76m/9' 1"
Overall Length	6.30m/20' 8"	6.30m/20' 8"	6.30m/20' 8"	6.92m/22' 8"	6.92m/22' 8"	7.08m/23' 3"	7.08m/23' 3"	7.08m/23' 3"	7.08m/23' 3"	7.08m/23' 3"
Mass in Running Order	1093kg/21.5cwt	1109kg/21.8cwt*	1133kg/22.3cwt*	1209kg/23.8cwt	1224kg/24.1cwt*	1259kg/24.8cwt*	1266kg/25.0cwt*	1246kg/24.6cwt*	1256kg/24.8cwt*	1270kg/25.0cwt*
Essential Habitation Equipment Payload	82kg/1.6cwt	82kg/1.6cwt	82kg/1.6cwt	82kg/1.6cwt	82kg/1.6cwt	82kg/1.6cwt	82kg/1.6cwt	82kg/1.6cwt	82kg/1.6cwt	82kg/1.6cwt
Personal Effects Payload	104kg/2.1cwt	104kg/2.1cwt	104kg/2.1cwt	130kg/2.6cwt	130kg/2.6cwt	142kg/2.8cwt	132kg/2.6cwt	132kg/2.6cwt	132kg/2.6cwt	142kg/2.8cwt
Optional Equipment Payload	19kg/0.4cwt	19kg/0.4cwt	6kg/0.1cwt	6kg/0.1cwt	6kg/0.1cwt	6kg/0.1cwt	6kg/0.1cwt	6kg/0.1cwt	6kg/0.1cwt	6kg/0.1cwt
Maximum Technical Permissible Laden Mass	1298kg/25.6cwt	1314kg/25.9cwt*	1325kg/26.1cwt*	1427kg/28.1cwt	1442kg/28.4cwt*	1489kg/29.3cwt*	1486kg/29.3cwt*	1466kg/28.9cwt*	1476kg/29.1cwt*	1500kg/29.5cwt
Awning A/A Dimension††	8.90m/29' 2"	8.90m/29' 2"	8.90m/29' 2"	9.52m/31' 3"	9.52m/31' 3"	9.68m/31' 9"	9.68m/31' 9"	9.68m/31' 9"	9.68m/31' 9"	9.68m/31' 9"
Tyre Size	195/70r14 95	195/70r14 95	195/70r14 95	175r14 99	175r14 99	175r14 99	175r14 99	175r14 99	175r14 99	175r14 99

## Bed Sizes

Front Double	208cm x 139cm/6'10" x 4'7"	208cm x 190cm/6'10" x 6'3"	208cm x 190cm/6'10" x 6'3"	208cm x 139cm/6'10" x 4'7"	208cm x 180cm/6'10" x 5'11"	208cm x 139cm/6'10" x 4'7"	208cm x 180cm/6'10" x 5'11"	208cm x 166cm/6'10" x 5'5"	208cm x 139cm/6'10" x 4'7"	208cm x 180cm/6'10" x 5'11"
or One Single		190cm x 71cm/6'3" x 2'4"	190cm x 71cm/6'3" x 2'4"	190cm x 71cm/6'3" x 2'4"	190cm x 71cm/6'3" x 2'4"		190cm x 71cm/6'3" x 2'4"	190cm x 71cm/6'3" x 2'4"		190cm x 71cm/6'3" x 2'4"
and One Single		190cm x 71cm/6'3" x 2'4"	190cm x 71cm/6'3" x 2'4"	190cm x 71cm/6'3" x 2'4"	180cm x 71cm/5'11" x 2'4"		180cm x 71cm/5'11" x 2'4"	166cm x 71cm/5'5" x 2'4"		180cm x 71cm/5'11" x 2'4"
Rear Double						208cm x 138cm/6'10" x 4'6"	190cm x 138cm/6'3" x 4'6"	196cm x 138cm/6'5" x 4'6"	190cm x 138cm/6'3" x 4'6"	192cm x 138cm/6'4" x 4'6"
Rear Bunk						192cm x 58cm/6'4" x 1'11"				192cm x 58cm/6'4" x 1'11"
Side Single (offside)				180cm x 66cm/5'11" x 2'2"	180cm x 66cm/5'11" x 2'2"					
Side Bunk				178cm x 56cm/5'10" x 1'10"	178cm x 56cm/5'10" x 1'10"					

\*Estimated weight

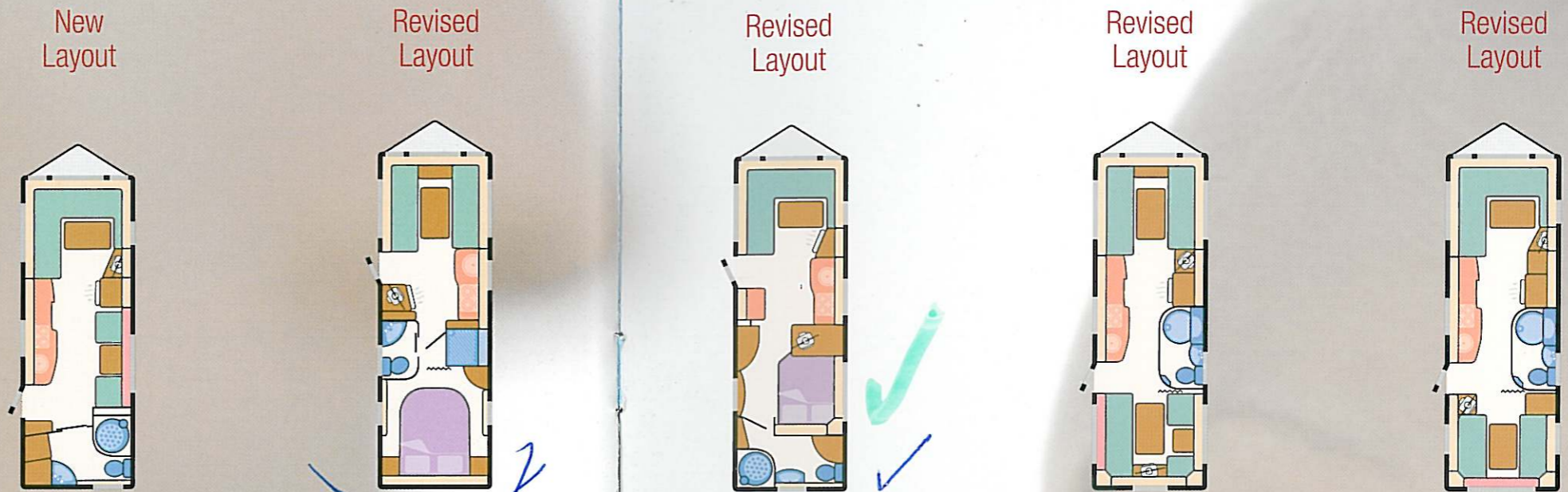
†Double bed sizes are quoted with wrap round seating.

††Note on awning sizes: Due to the varying awning designs and sizes the awning sizes given are approximate only. Specific awning sizes must be confirmed by your dealer or the awning manufacturer prior to purchase.

# Eccles Elite

## Technical Specification

- LIVING AREA
- FURNITURE
- KITCHEN
- WASHROOM
- FIXED BEDS
- LOCKERS
- BUNK BED



## Specification

	OVERLANDER	EXPLORER	SEARCHER	TREKKER	WAYFARER
Berths	4	4	4	5 Opt 6	5
Number of Axles	2	2	2	2	2
Internal Length (at bed box height)	5.85m/19' 2"	6.27m/20' 7"	6.27m/20' 7"	6.27m/20' 7"	6.27m/20' 7"
Overall Width	2.23m/7' 4"	2.23m/7' 4"	2.23m/7' 4"	2.23m/7' 4"	2.23m/7' 4"
Overall Height (including Status TV aerial)	2.76m/9' 1"	2.76m/9' 1"	2.76m/9' 1"	2.76m/9' 1"	2.76m/9' 1"
Overall Length	7.54m/24' 9"	7.96m/26' 1"	7.96m/26' 1"	7.96m/26' 1"	7.96m/26' 1"
Mass in Running Order	1342kg/26.4cwt	1413kg/27.8cwt	1482kg/29.2cwt	1461kg/28.7cwt*	1442kg/28.4cwt*
Essential Habitation Equipment Payload	115kg/2.3cwt	115kg/2.3cwt	115kg/2.3cwt	115kg/2.3cwt	115kg/2.3cwt
Personal Effects Payload	136kg/2.6cwt	140kg/2.7cwt	140kg/2.7cwt	160kg/3.1cwt	150kg/2.9cwt
Optional Equipment Payload	29kg/0.6cwt	29kg/0.6cwt	29kg/0.6cwt	49kg/1.0cwt	29kg/0.6cwt
Maximum Technical Permissible Laden Mass	1622kg/31.9cwt	1697kg/33.4cwt	1766kg/34.8cwt	1785kg/35.1cwt*	1736kg/34.2cwt*
Awning A/A Dimension††	10.08m/33' 1"	10.50m/34' 5"	10.50m/34' 5"	10.50m/34' 5"	10.50m/34' 5"
Tyre Size	175/65r14 82	175/65r14 82	175/65r14 82	175/65r14 82	175/65r14 82

## Bed Sizes

Front Double†	208cm x 139cm/6'10" x 4'7"	208cm x 174cm/6'10" x 5'8½"	208cm x 139cm/6'10" x 4'7"	208cm x 180cm/6'10" x 5'11"	208cm x 139cm/6'10" x 4'7"
or One Single		174cm x 71cm/5'8½" x 2'4"		190cm x 71cm/6'3" x 2'4"	
and One Single		180cm x 71cm/5'11" x 2'4"		180cm x 71cm/5'11" x 2'4"	
Rear Double		186cm x 134cm/6'1" x 4'5"	192cm x 138cm/6'4" x 4'6"	205cm x 137cm/6'9" x 4'6"	208cm x 138cm/6'10" x 4'6"
Rear Bunk					192cm x 58cm/6'4" x 1'11"
Side Single (offside)	180cm x 66cm/5'11" x 2'2"			177cm x 68cm/5'10" x 2'3"	
Side Single (nearside)				177cm x 68cm/5'10" x 2'3"	
Side Bunk	178cm x 56cm/5'10" x 1'10"			172cm x 56cm/5'8" x 1'10"	
Optional Bunk				172cm x 56cm/5'8" x 1'10"	

\*Estimated weight

†Double bed sizes are quoted with wrap round seating.

††Note on awning sizes: Due to the varying awning designs and sizes the awning sizes given are approximate only. Specific awning sizes must be confirmed by your dealer or the awning manufacturer prior to purchase.



The Hallmark of Excellence

Sterling Caravans, Dunswell Road, Cottingham, East Yorkshire HU16 4JX. Telephone: 01482 847332 Fax: 01482 841042  
e-mail: enquiry@swiftleisure.co.uk web site: www.sterlingcaravans.co.uk A Member of the Swift Group

Your Local Dealer

**Somerset**  
Camping & Caravans

A38, BRIDGWATER ROAD, WALFORD CROSS,  
TAUNTON, SOMERSET, TA2 8QR

☎ 01823 413333

[www.somersetcaravans.co.uk](http://www.somersetcaravans.co.uk)



INVESTOR IN PEOPLE

This brochure does not constitute an offer by Swift Group Limited (Swift). Swift reserves the right to alter specifications and prices at any time as materials and conditions demand. Distributors and dealers sell Sterling products on their own account and not as agents of Swift. Accordingly they have no authority to bind Swift or to make any representation or undertaking whatsoever on behalf of Swift.

The touring caravans described in this brochure are designated by their model year. The model year runs from 1 September to 31 August and the despatch of 2004 models will have commenced on or after 1 September 2003.

Issued September 2003

