



Quality with Style



**YOUR 1ST CHOICE FOR
MORE CHOICE**

- OVER 300 CARAVANS ON SHOW
- INDOOR & SEASONAL OUTDOOR CAMPING DISPLAY
- AWNING DISCOUNT CENTRE
- ACCESSORIES SUPERMARKET
- 5 STAR SERVICE CENTRE & REPAIR WORKSHOPS
- FINANCE & INSURANCE (SUBJECT TO STATUS)

**GUARANTEED A
WARM WELCOME**

HIGHBRIDGE

Caravan and Camping Centre

**OPEN 7 DAYS
A WEEK**

 **01278 782725**

A38, BRISTOL RD, HIGHBRIDGE, SOMERSET, TA9 4EX
www.highbridgecaravans.co.uk

Swift Caravans 2005



Conqueror

Challenger

Charisma



All Swift Group models have been certified by the National Caravan Council for compliance with stringent European Standards, British Legislation and industry set Codes of Practice specifically relating to health and safety issues. The approval process covers the testing and inspection of critical areas of the product from fire safety, weights and dimensions, to gas, electrics and ventilation. Every Swift caravan carries the "NCC Approved Caravan" badge. The NCC also conduct unannounced inspections at the Swift Group factory to ensure continued compliance. NCC Approval gives you peace of mind that your caravan is legal and safe.

CRIS

For added security all Swift caravans come registered with the Caravan Registration and Identification Scheme (CRIS), the UK's official database of caravans and their keepers. Swift caravans not only carry the unique 17 digit CRIS Vehicle Identification Number (VIN) die stamped into the chassis, but windows are also etched with the VIN and an electronic tag embedded within the bodywork for extra security. Specialist insurance companies increasingly require registration with CRIS before granting cover and when you come to sell your caravan your CRIS registration will prove invaluable.

Swift Caravans

Quality with Style

Swift Caravans are the result of four decades of quality and innovation that has earned the brand the distinction of being revered as the thoroughbred of the touring caravan world.

The Swift ethos is based on combining build quality with pure luxury and functional layouts that suit every need.

2005 sees an all new Charisma range, with three new layouts including the first twin axle in this line-up. All models have benefited from new technology to make lockers and bed frames lighter and stronger, and interior styling has been transformed with an innovative design approach.

Other improvements include higher specification kitchens in the Challenger and Conqueror ranges, which have both enjoyed great success following their redesign.

The quality ethos extends to the SuperCare aftersales service and the SuperSure three-year manufacturer's warranty, that comes with every new Swift tourer, providing peace of mind on holiday.

Swift's active owners' club is open to all purchasers of Swift tourers.

Full details can be found by logging onto www.swift-owners-club.co.uk



Conqueror

travel in style

Five models make up this flagship range, which has enjoyed overwhelming success and stands head and shoulders above its competitors. For 2005 new features include burgundy designer graphics, redesigned hitch cover and the latest AL-KO AKS 3004 stabiliser for added towing confidence.

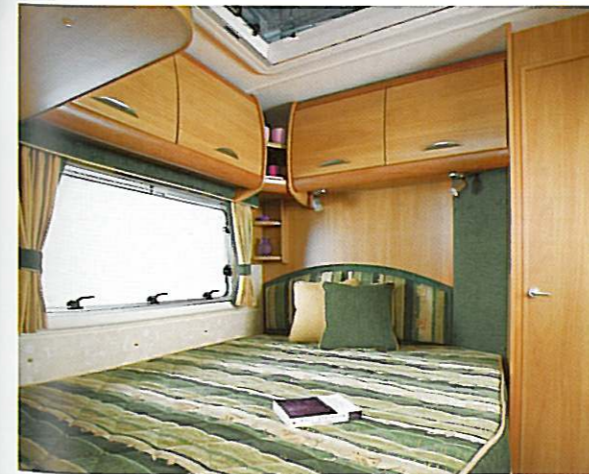


Conqueror

Kitchens have been upgraded even further for 2005 with a new Stoves cooker, new kitchen laminate and food grade nylon chopping board, which can be stored away when not in use. A microwave oven comes as standard in all models.



Conqueror 630 SAL



Conqueror 630 SAL



Conqueror 630 SAL

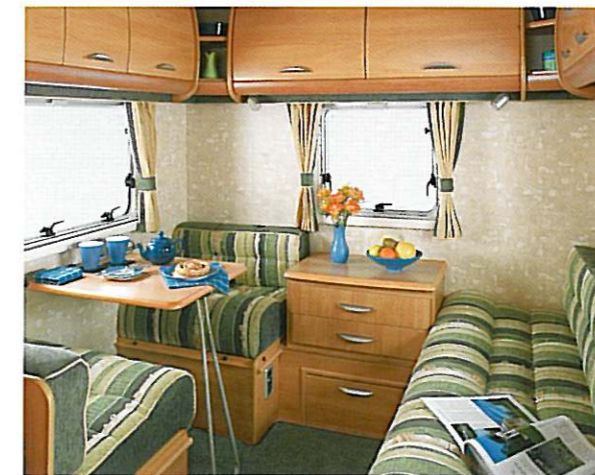
Conqueror

Relax on soft furnishings in Dakar green and cream. Italian-style curved furniture provides plenty of storage in the lockers. Front corner panels are fabric trimmed and there are loose fit carpets fitted over wood block effect vinyl flooring for easy cleaning.

The Conqueror also comes with fitted speakers, wiring, housing and aerial to make the installation of your chosen sound system trouble-free.



Conqueror 580 SAL



Conqueror 650 LUX



Conqueror 630 SAL

Conqueror

Bunk beds have a lighter, more secure ladder and bed tops are cantilever hinged offering easier access to spacious storage. Washrooms are fully fitted and luxurious, following a redesign and upgrade, with all models offering separate sealed circular shower cubicles. The 630 has an airing cupboard and all models are fitted with a Thetford cassette toilet with independent tank and electric flush.



Conqueror 640 SAL



Above & main picture Conqueror 645 LUX



Conqueror 580 SAL

Conqueror

Features

Exterior

New for 2005

- AL-KO AKS 3004 stabiliser
- Hitch cover with integral courtesy light
- New Graphics scheme
- Glacier white exterior
- 3 window front with high level marker lights
- Back panel incorporating high level spoiler, high level brake light and wrap round rear light cluster
- AL-KO Euro hitch with assisted handbrake
- 14" alloy wheels
- Underslung spare wheel carrier
- Flush fitting aluminium framed windows
- Heki large tilting panoramic roof window with flynet and blind (2 in 630 & 645)
- Exterior door with window, blind and moulded interior door liner with integral magazine storage
- External access heated locker (model specific)
- Exterior access battery box with mains inlet and aerial input socket (battery not included)
- Lined external access locker with 230v external socket
- External access door under fixed bed (630)
- Gas bottle storage with gas strut supported door
- AL-KO lightweight galvanised steel chassis with Euro-Axle
- Heavy duty corner steadies
- Smooth aluminium single joint side panels
- TV/FM aerial and booster
- Awning channel on both sides of caravan
- Flush fitting awning light
- Reversing light
- Barbecue point with isolation valve
- Fixing points for rear mounted cycle rack (model specific)
- Removable fridge vents for easy maintenance and inspection
- Quick release door retainer

Lounge/Dining area

New for 2005

- Restyled fabric covered front corner pods
- Large curved upper lockers with integrated front corner light mouldings
- Dakar Green upholstery fabric
- Luxury loose fit carpet
- Woodblock effect vinyl floor covering

- Aluminium framed double bed tops (model specific)
- Korsica Apple colour furniture with co-ordinated handles
- Long front beds 1900mm (6'3") (model specific)
- Large 'L' shaped front lounge (model specific)
- Chest of drawers with occasional table (model specific)
- Drop down front side bed flaps
- Cantilever hinged action bed top with beech sprung slats
- Front roof lockers
- Freestanding table with dedicated storage location
- Rolled edged hardwood mouldings to worktops and tables
- Two television station points (640 Sal, 650 Lux & 645 Lux)
- Backrest ventilation boards
- Optional 6 berth layout (650)
- Cocktail cabinet with courtesy light
- Split front base cushions for easy bed make up
- Super quality domestic style sprung seats and backrests
- Curtains with tie-backs and contrasting pelmets
- Curtain storage for centre dinette curtain (MS)
- Twin curtain tracks for improved hanging presentation and ease of use
- Scatter cushions
- Clock

Body Structure

- 44mm bonded floor with styrofoam insulation core
- 32mm semi bonded roof with polystyrene insulation core
- 25mm bonded side walls with polystyrene insulation core

Fittings and Equipment

New for 2005

- New design aluminium bunk ladder (where bunks provided)
- Multi position 'Mini Heki' clear skylights with blind and flyscreen (model specific)
- Cassette flyscreens and blinds to all windows (concertina on sides and rear)
- Concertina partition doors to rear bedroom models (model specific)
- Steel rimmed spare wheel and tyre
- Multi directional roof lights with sliding blind and flynet
- Full height exterior door flyscreen
- Night latch ventilation to all windows
- Entrance mat with embroidered logo in brush out tray
- AL-KO side mounted scissor jack
- Smoke alarm
- Caravan entrance step
- Portable wheeled waste water container
- Removable hanging rail in shower (model specific)
- Isolation taps to all gas appliances
- Pull out roller slatted beds
- Domestic style cabinet hinges
- Smooth operation steel drawer runners

Kitchen

New for 2005

- New food grade nylon chopping board
- New style kitchen laminate
- New style Stoves flush fitting thermostatically controlled oven with grill and pan storage
- Recessed stainless steel bowl with pillar tap, removable draining board
- Microwave oven
- 86 litre electronic power fridge (not Conqueror 630)
- 135 litre electronic fridge/freezer (Conqueror 630)
- New style dual fuel hob with 800W electric hot plate, three gas burners incorporating flame failure protection and electronic ignition

- Safety hob lid with cut out feature
- L shaped kitchen with swivel TV facility and worktop extension (630)
- Pull out storage baskets (model specific)
- Utensil rack (model specific)
- Moulded cutlery drawer on smooth steel runners
- Towel rail on fridge door

Washroom

- Fully fitted luxury washroom with vanity unit and sealed shower cubicle
- Thetford cassette toilet with independent tank and electric flush
- Access to wardrobe shelving from vanity mirror door (580)
- Airing cupboard (630)
- Microswitched chrome finish lever mixer tap
- Chrome finish shower equipment
- Opening window

Heating and Plumbing

- Dual fuel gas and mains 800W electric storage water heater
- Bulkhead mounted gas regulator
- Up rated 12 litre/minute submersible water pump
- Dual fuel 3kW gas & 2kW electric space heater complete with ducted blown air heating
- Grade 2 classification for heating and thermal insulation
- Internal 9 gallon water tank with filling pump and level gauge
- Large bore underslung rigid waste pipes
- Inboard semi-rigid piped fresh water system

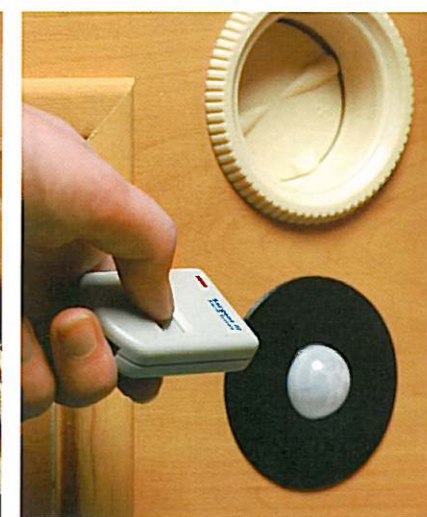
Electrical

New for 2005

- Upgraded 12V cable to television point
- Power supply unit incorporating 18 amp switchmode charger/transformer
- Solar panel plug-in provision
- Electrical control panel over exterior door
- Fully protected mains electric system with four 230V mains sockets and 1 external
- 12V electrical system with one 12V socket and plug (2 in 640, 645 & 650)
- Colour co-ordinated adjustable 12V halogen reading lights
- Colour co-ordinated downlighters in kitchen
- Colour co-ordinated mains lights
- Colour co-ordinated 12V halogen ceiling lights
- TV station with 230V/12V sockets and coax/aerial connection (2 in 640, 645 & 650)
- Colour co-ordinated halogen lighting in washroom
- Omnivent 3 speed fan and skylight
- Fitted speakers, wiring, housing and aerial for easy fitting of a sound system
- 25 metre mains hook-up lead

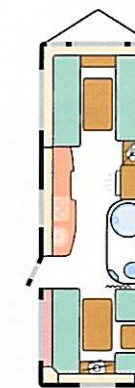
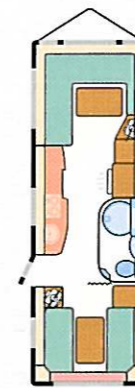
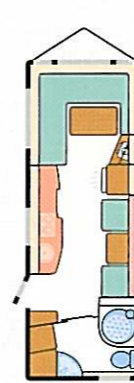
Security & Safety

- Alarm system with passive infra-red and tilt sensor with easy to use key fob operation
- Identity number etched to windows and caravan chassis
- Concealed security data chip within caravan construction
- Lockable rear corner steadies (lock not supplied)
- Single key operated locks
- All models comply with European standards



Conqueror

specification



Model

	580 SAL	630 SAL	640 SAL	645 LUX	650 LUX
Berths	4	4	5	4	5
Number of Axles	2	2	2	2	2
Internal Length (at bed box height)	5.85m/19'2"	6.27m/20'7"	6.27m/20'7"	6.27m/20'7"	6.27m/20'7"
Overall Width	2.23m/7'4"	2.23m/7'4"	2.23m/7'4"	2.23m/7'4"	2.23m/7'4"
Overall Height (including TV aerial)	2.76m/9'1"	2.76m/9'1"	2.76m/9'1"	2.76m/9'1"	2.76m/9'1"
Overall Length	7.54m/24'9"	7.96m/26'1"	7.96m/26'1"	7.96m/26'1"	7.96m/26'1"
Mass in Running Order (including tolerance)	1327kg/26.1cwt*	1457kg/28.7cwt	1419kg/27.9cwt	1398kg/27.5cwt*	1446kg/28.5cwt
Essential Habitation Equipment Payload	115kg/2.3cwt	115kg/2.3cwt	115kg/2.3cwt	115kg/2.3cwt	115kg/2.3cwt
Personal Effects Payload	136kg/2.7cwt	140kg/2.8cwt	150kg/3.0cwt	140kg/2.8cwt	160kg/3.1cwt
Optional Equipment Payload	29kg/0.6cwt	29kg/0.6cwt	29kg/0.6cwt	29kg/0.6cwt	49kg/1.0cwt
Maximum Technical Permissible Laden Mass	1607kg/31.7cwt*	1741kg/34.4cwt	1713kg/33.8cwt	1682kg/33.2cwt*	1770kg/34.9cwt
Awning A/A Dimension ^{††}	10.08m/33'1"	10.50m/34'5"	10.50m/34'5"	10.50m/34'5"	10.50m/34'5"
Tyre Size	175/65 r14 82	175/65 r14 82	175/65 r14 82	175/65 r14 82	175/65 r14 82

Bed sizes

	580 SAL	630 SAL	640 SAL	645 LUX	650 LUX
Front Double [†]	208cm x 139cm/6'10" x 4'7"	208cm x 139cm/6'10" x 4'7"	208cm x 139cm/6'10" x 4'7"	208cm x 180cm/6'10" x 5'11"	208cm x 180cm/6'10" x 5'11"
or One Single				182cm x 71cm/6'0" x 2'4"	190cm x 71cm/6'3" x 2'4"
and One Single				180cm x 71cm/5'11" x 2'4"	180cm x 71cm/5'11" x 2'4"
Rear Double		192cm x 138cm/6'4" x 4'6"	208cm x 138cm/6'10" x 4'6"	186cm x 134cm/6'1" x 4'5"	205cm x 137cm/6'9" x 4'6"
Rear Bunk			192cm x 58cm/6'4" x 1'11"		
Side Single (offside)	180cm x 66cm/5'11" x 2'2"				177cm x 68cm/5'10" x 2'3"
Side Single (nearside)					177cm x 68cm/5'10" x 2'3"
Side Bunk	178cm x 56cm/5'10" x 1'10"				172cm x 56cm/5'8" x 1'10"
Optional Bunk					172cm x 56cm/5'8" x 1'10"

* Estimated weight.

[†] Double bed size is quoted with wrap round seating.

^{††} Note on awning sizes:

Due to the varying awning designs and sizes the awning sizes given are approximate only. Specific awning sizes must be confirmed by your dealer or the awning manufacturer prior to purchase.

Challenger

let yourself explore

The Challenger range has 10 models to choose from, and all boast a distinctive glacier white exterior, full height rear panel with smart light clusters and new designer graphics. Wheel spats and polished alloy wheels finish off the exterior look, whilst the latest AL-KO AKS 3004 stabiliser has been fitted for added towing confidence.



Challenger

The Challenger's width of 7'4" makes a real difference in areas like the redesigned kitchen, which incorporates domestic style fixtures and fittings. Also new are the latest Stoves cooker, food grade nylon chopping board and a new laminate surface with hardwood edges. There is an exterior BBQ point for the option to cook al-fresco.



Challenger 530

Challenger

Front corner pods have been fabric trimmed to co-ordinate with the Nordica burgundy soft furnishings. Mini and large Heki rooflights help to make the interior light and airy. Curved locker design provides ample overhead storage.

A new improved charger unit and the ability to plug in your solar panel to help preserve the battery, are among the other improvements.



Challenger 530



Challenger 500



Challenger 460

Challenger

Beds are comfortable and practical, featuring split front cushions to make them easier to assemble. Cantilever hinged bed tops provide easy access to underseat storage.

Washrooms are luxurious with generous storage and all models offer a spacious integral shower cubicle or separated shower area.



Challenger 500

Challenger

features

Exterior

New for 2005

- AL-KO AKS 3004 stabiliser
- Hitch cover with integral gas compartment light
- New graphics scheme
- Glacier white exterior
- 3 window front with high level marker lights
- Back panel incorporating high level spoiler, high level brake light and new wrap round rear light cluster
- Front gutter mould
- All models now with increased body width of 2.23m/7'4"
- Flush fitting aluminium framed windows
- AL-KO Euro hitch with assisted handbrake
- Heavy duty corner steadies
- 14" polished alloy wheels
- Barbecue point with isolation valve
- Underslung spare wheel carrier
- Heki large tilting panoramic roof window with flynet and blind (2 in 500)
- Exterior door with window, blind and moulded interior door liner with integral magazine storage
- External access door under fixed bed (500, 550 & 550L)
- External access locker (model specific)
- Exterior access battery box with mains inlet and aerial input socket (battery not included)
- Lined external access locker with 230v external socket
- Gas bottle storage with gas strut supported door
- Smooth aluminium single joint side panels
- AL-KO lightweight galvanised steel chassis with Euro-Axle
- TV/FM aerial and booster
- Flush fitting awning light
- Awning channel on both sides of caravan
- Reversing light
- Removable fridge vents for easy maintenance and inspection
- Fixing points for rear mounted cycle rack (model specific)
- Quick release door retainer

Lounge/Dining area

New for 2005

- Restyled fabric covered front corner pods
- Large curved upper lockers
- Nordic burgundy upholstery fabric
- Luxury loose fit carpet
- Woodblock effect vinyl floor covering
- Aluminium framed double bed tops (model specific)
- Korsica Apple colour furniture with co-ordinated handles
- Long front beds 1900mm (6'3") (model specific)
- Large 'L' shaped front lounge (model specific)
- Chest of drawers with occasional table (model specific)
- Freestanding table with dedicated storage location
- Cocktail cabinet with courtesy light
- Cantilever hinged bed tops sized for easy access
- Drop down front side bed flaps
- Backrest ventilation boards
- Super quality domestic style sprung seats and backrests
- Split front base cushions for easy bed make up
- Front roof lockers
- Rolled edged hardwood mouldings to worktops and tables
- Clock
- Curtains with tie-backs and contrasting pelmets
- Curtain storage for centre dinette curtain (model specific)
- Scatter cushions
- Twin curtain tracks for improved hanging presentation and ease of use

Body Structure

- 44mm bonded floor with styrofoam insulation core
- 32mm semi bonded roof with polystyrene insulation core
- 25mm bonded side walls with polystyrene insulation core

Fittings and Equipment

New for 2005

- New design aluminium bunk ladder (where bunks provided)
- Multi position 'Mini Heki' clear skylights with blind and flyscreen (model specific)
- Cassette flyscreens and blinds to all windows (concertina on sides and rear)
- Steel rimmed spare wheel and tyre
- Concertina partition doors to rear bedroom models (model specific)
- Multi directional roof lights with sliding blind and flynet
- Night latch ventilation to all windows
- Full height exterior door flyscreen
- Entrance mat with embroidered logo in brush out tray
- Caravan entrance step
- Removable hanging rail in shower (model specific)
- Smoke alarm
- Pull out roller slatted beds
- Isolation taps to all gas appliances
- Domestic style cabinet hinges
- Smooth operation steel drawer runners

Kitchen

New for 2005

- New food grade nylon chopping board
- New style kitchen laminate
- New style Stoves flush fitting thermostatically controlled oven with grill and pan storage

- Electronic power fridge with full width freezer
- Recessed stainless steel bowl with pillar tap, removable draining board
- Microwave oven provision (460 & 470)
- New style dual fuel hob with 800W electric hot plate, three gas burners incorporating flame failure protection and electronic ignition
- Safety hob lid with cut out feature
- L shaped kitchen with swivel TV facility and worktop extension (500)
- Towel rail on fridge door
- Utensil rack (model specific)
- Moulded cutlery drawer on smooth steel runners
- Pull out storage baskets (model specific)

Washroom

New for 2005

- Fully fitted luxury washroom with separate shower area or cubicle
- Thetford cassette toilet with independent tank and electric flush
- Access to wardrobe shelving from vanity mirror door (model specific)
- Opening window
- Chrome finish shower equipment
- Microswitched chrome finish lever mixer tap

Heating and Plumbing

- Dual fuel gas and mains 800W electric storage water heater
- Bulkhead mounted gas regulator
- Up rated 12 litre/minute submersible water pump
- Dual fuel 3kW gas & 2kW electric space heater complete with ducted blown air heating
- Grade 2 classification for heating and thermal insulation
- Inboard semi-rigid piped fresh water system
- Large bore underslung rigid waste pipes

Electrical

New for 2005

- Upgraded 12V cable to television point
- Power supply unit incorporating 18 amp switchmode charger/transformer
- Solar panel plug-in provision
- Electrical control panel over exterior door
- Colour co-ordinated 12V halogen ceiling lights
- Colour co-ordinated downlighters in kitchen
- Colour co-ordinated mains lights
- Colour co-ordinated halogen lighting in washroom
- Colour co-ordinated adjustable 12V halogen reading lights
- 12v electrical system with one 12V socket and plug
- TV station with 230V/12V sockets and coax/aerial connection
- Omnivent 3 speed fan and skylight
- Fully protected mains electric system with three 230V mains sockets
- Fitted speakers, wiring, housing and aerial for easy fitting of a sound system
- 25 metre mains hook-up lead

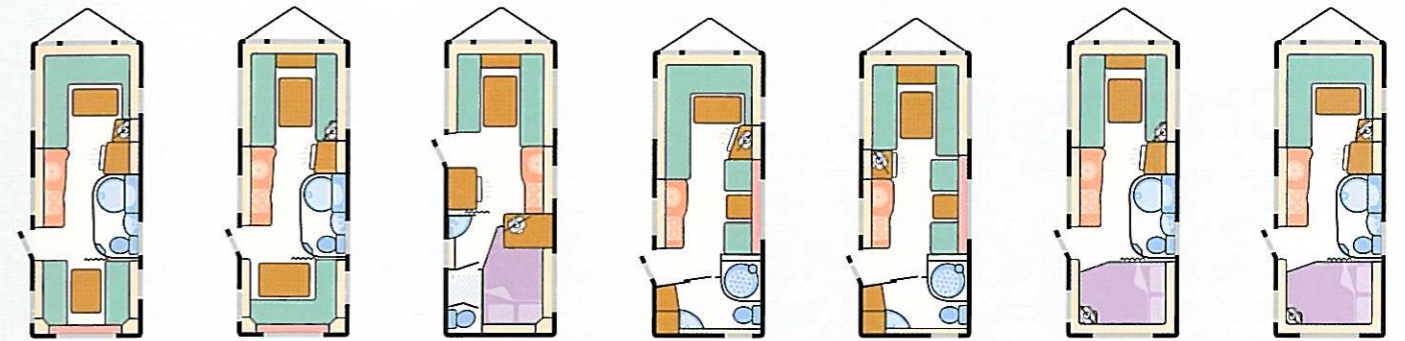
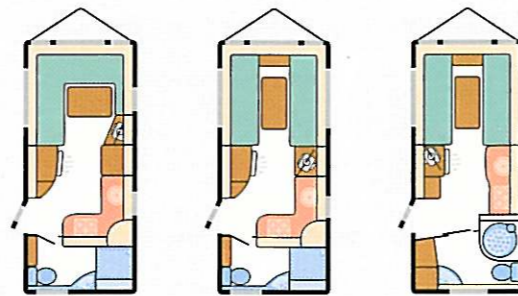
Security & safety

- Identity number etched to windows and caravan chassis
- Concealed security data chip within caravan construction
- Single key operated locks
- All models comply with European standards



Challenger

specification



Model

	460	470	480	490	490L	500	520	530	550	550L
Berths	2	2	2	5	5	4	4	4	4	4
Number of Axles	1	1	1	1	1	1	1	1	1	1
Internal Length (at bed box height)	4.61m/15'2"	4.61m/15'2"	4.61m/15'2"	5.39m/17'8"	5.39m/17'8"	5.39m/17'8"	5.23m/17'2"	5.23m/17'2"	5.39m/17'8"	5.39m/17'8"
Overall Width	2.23m/7'4"	2.23m/7'4"	2.23m/7'4"	2.23m/7'4"	2.23m/7'4"	2.23m/7'4"	2.23m/7'4"	2.23m/7'4"	2.23m/7'4"	2.23m/7'4"
Overall Height (including TV aerial)	2.76m/9'1"	2.76m/9'1"	2.76m/9'1"	2.76m/9'1"	2.76m/9'1"	2.76m/9'1"	2.76m/9'1"	2.76m/9'1"	2.76m/9'1"	2.76m/9'1"
Overall Length	6.30m/20'8"	6.30m/20'8"	6.30m/20'8"	7.08m/23'3"	7.08m/23'3"	7.08m/23'3"	6.92m/22'8"	6.92m/22'8"	7.08m/23'3"	7.08m/23'3"
Mass in Running Order (including tolerance)	1084kg/21.3cwt	1092kg/21.5cwt	1123kg/22.1cwt	1236kg/24.3cwt	1243kg/24.5cwt	1231kg/24.2cwt	1191kg/23.4cwt	1209kg/23.8cwt	1214kg/23.9cwt	1214kg/23.9cwt
Essential Habitation Equipment Payload	82kg/1.6cwt	82kg/1.6cwt	82kg/1.6cwt	82kg/1.6cwt	82kg/1.6cwt	82kg/1.6cwt	82kg/1.6cwt	82kg/1.6cwt	82kg/1.6cwt	82kg/1.6cwt
Personal Effects Payload	104kg/2.0cwt	104kg/2.0cwt	104kg/2.0cwt	142kg/2.8cwt	142kg/2.8cwt	132kg/2.6cwt	130kg/2.6cwt	130kg/2.6cwt	132kg/2.6cwt	132kg/2.6cwt
Optional Equipment Payload	17kg/0.3cwt	17kg/0.3cwt	4kg/0.1cwt	4kg/0.1cwt	4kg/0.1cwt	4kg/0.1cwt	4kg/0.1cwt	4kg/0.1cwt	4kg/0.1cwt	4kg/0.1cwt
Maximum Technical Permissible Laden Mass	1287kg/25.2cwt	1295kg/25.4cwt	1313kg/25.8cwt	1464kg/28.8cwt	1471kg/29.0cwt	1449kg/28.5cwt	1407kg/27.7cwt	1425kg/28.1cwt	1432kg/28.2cwt	1432kg/28.2cwt
Awning A/A Dimension [†]	8.90m/29'2"	8.90m/29'2"	8.90m/29'2"	9.68m/31'9"	9.68m/31'9"	9.68m/31'9"	9.52m/31'3"	9.52m/31'3"	9.68m/31'9"	9.68m/31'9"
Tyre Size	195/70 r14 95	195/70 r14 95	195/70 r14 95	175 r14 99	175 r14 99	175 r14 99	175 r14 99	175 r14 99	175 r14 99	175 r14 99

Bed sizes

Front Double [‡]	208cm x 139cm/6'10" x 4'7"	208cm x 190cm/6'10" x 6'3"	208cm x 190cm/6'10" x 6'3"	208cm x 139cm/6'10" x 4'7"	208cm x 180cm/6'10" x 5'11"	208cm x 166cm/6'10" x 5'5"	208cm x 139cm/6'10" x 4'7"	208cm x 180cm/6'10" x 5'11"	208cm x 180cm/6'10" x 5'11"	208cm x 139cm/6'10" x 4'7"
or One Single		190cm x 71cm/6'3" x 2'4"	190cm x 71cm/6'3" x 2'4"		190cm x 71cm/6'3" x 2'4"	190cm x 71cm/6'3" x 2'4"	190cm x 71cm/6'3" x 2'4"	190cm x 71cm/6'3" x 2'4"	190cm x 71cm/6'3" x 2'4"	190cm x 71cm/6'3" x 2'4"
and One Single		190cm x 71cm/6'3" x 2'4"	190cm x 71cm/6'3" x 2'4"		180cm x 71cm/5'11" x 2'4"	166cm x 71cm/5'5" x 2'4"	190cm x 71cm/6'3" x 2'4"	180cm x 71cm/5'11" x 2'4"	180cm x 71cm/5'11" x 2'4"	180cm x 71cm/5'11" x 2'4"
Rear Double				208cm x 138cm/6'10" x 4'6"	192cm x 138cm/6'4" x 4'6"	196cm x 138cm/6'5" x 4'6"			190cm x 138cm/6'3" x 4'6"	190cm x 138cm/6'3" x 4'6"
Rear Bunk				192cm x 58cm/6'4" x 1'11"	192cm x 58cm/6'4" x 1'11"					
Side Single (offside)							180cm x 66cm/5'11" x 2'2"	180cm x 66cm/5'11" x 2'2"		
Side Bunk							178cm x 56cm/5'10" x 1'10"	178cm x 56cm/5'10" x 1'10"		

* Estimated weight.

‡ Double bed size is quoted with wrap round seating.

† Note on awning sizes:

Due to the varying awning designs and sizes the awning sizes given are approximate only. Specific awning sizes must be confirmed by your dealer or the awning manufacturer prior to purchase.

Charisma

the holiday of a lifetime

The all new Charisma range has three new layouts including a twin-axle model and all models are now 7'4" wide. New exterior features include a moulded rear panel with new light clusters and high level brake light, exterior graphics and alloy wheels. All models are fitted with the new AL-KO AKS 3004 stabiliser for added towing confidence.



Charisma

Locker and bed frame construction has been revolutionised with the introduction of injection moulded materials, which are light and strong. This has created more storage space in lockers and under beds. Some lockers have shelves which are hinged to enable storage of more bulky items.

New Fiji terracotta soft furnishings create a stylish, comfortable interior, while co-ordinating loose-fit carpets over wood block effect vinyl flooring are easily removed for cleaning.



Charisma

The interior benefits from brand new furniture styling and enhanced 12V lighting.

New aluminium frames on top of fixed beds provide a comfortable sleeping base and cantilever hinged bed tops give easy access to storage underneath.



Main picture Charisma 565
Above Charisma 230



Charisma 230



Charisma 550

Charisma

The redesigned kitchen features a new Stoves cooker, recessed sink with circular bowl and chopping board and an 89 litre electronic ignition fridge with cloaking door. The laminate work surface has thick durable edging.

Corner washrooms have a bi-fold door, which separates the shower area from the cassette toilet. The new 590 has a large rear washroom with a double "walk-in" wardrobe.



Charisma 565



Charisma 230

Charisma 550

Charisma

features

Exterior

New for 2005

- AL-KO AKS 3004 stabiliser
- Euro overrun device with assisted handbrake
- Alloy wheels
- Hitch cover
- Moulded rear panel incorporating new light clusters and high level brake light
- Re-styled front panel featuring new style screen print windows
- New graphics scheme
- Increased body width 2.23m/7'4"
- New wheel spat design
- Flush fitting awning light
- Glacier white exterior
- Underslung spare wheel and carrier
- Double glazed opening windows with concealed fixings
- Exterior door with window and blind
- Exterior access battery box with mains inlet (battery not included)
- Lined external access locker (model specific)
- Gas bottle storage with gas strut supported door
- Heki large tilting panoramic roof window with flynet and blind (2 in 550)
- Smooth aluminium single joint side panels
- AL-KO lightweight galvanised steel chassis with Euro-Axle
- Awning channel on both sides of caravan
- Reversing light
- High level side marker lights
- Removable fridge vents with integral fly mesh for easy maintenance and inspection
- Fixing points for rear mounted cycle rack (model specific)
- Quick release door retainer

Lounge/Dining area

New for 2005

- New design large curved upper locker doors featuring lightweight locker construction made from injection moulded synthetic material

- Lightweight bed frames featuring injection moulded "space frame" technology with full front access
- Luxury loose fit carpets over wood block effect vinyl flooring
- New 'Fiji' terracotta upholstery scheme
- New side dinette table leg design
- TV shelf in rear of 555
- TV cupboard with swivel base (535 & 550)
- Korsica Apple colour furniture with co-ordinated handles
- Long front beds 1900mm (6'3") (model specific)
- Large 'L' shaped front lounge (model specific)
- Chest of drawers with occasional table (model specific)
- Freestanding table with dedicated storage location
- Cantilever hinged bed tops sized for easy access
- New improved drop down front side bed flaps
- Cocktail cabinet
- Dedicated permanent bunk bed featuring fixed ladder and lighting (570 & 590)
- Seat ventilation boards
- Curtains with tie-backs
- Curtain storage for centre dinette curtain (model specific)
- Twin curtain tracks for improved hanging presentation and ease of use
- Super quality domestic style sprung seats and backrests
- Split front base cushions for easy bed make up
- 2 scatter cushions and 2 bolster cushions
- Clock

Body Structure

- 25mm bonded side walls with polystyrene insulation core
- 44mm bonded floor with styrofoam insulation core
- 32mm semi bonded roof with polystyrene insulation core

Fittings and Equipment

New for 2005

- Aluminium framed fixed bed top (535, 550 & 555)
- Teleco omni directional TV aerial
- New pull out roller slatted beds
- New concertina partition door to rear bedroom models (model specific)
- New aluminium bunk ladder (where bunks provided)
- Domestic style cabinet hinges
- Steel rimmed spare wheel and tyre
- Multi directional roof lights with sliding blind and flynet
- Night latch ventilation to all windows
- Cassette flyscreen & blinds to all windows
- Full height exterior door flyscreen
- Large exterior offside entry door into multi-function storage area, incorporating a unique hinged bunk base allowing full access (570 only)
- Storage area floor fixing eyelets, for securing large items (570 & 590)
- Caravan entrance step
- Smoke alarm
- Removable entrance mat
- Isolation taps to all gas appliances
- Smooth operation steel drawer runners

Kitchen

New for 2005

- Recessed stainless steel bowl and pillar tap with removable food grade nylon chopping board and drainer
- New Thetford 89 litre electronic ignition fridge concealed by cloaking door

- Durable edge finish to kitchen worktop incorporating new style laminate
- Flush fitting Stoves thermostatically controlled oven with grill
- New style dual fuel hob with 800W electric hot plate and three gas burners incorporating flame failure protection and electronic ignition
- Safety hob lid with cut out feature
- Kitchen incorporating drop down extendible work surface (535 & 550)
- Moulded cutlery drawer on smooth steel runners

Washroom

New for 2005

- Improved washroom to 535 & 550 featuring bi-fold door, separating shower area from cassette toilet
- New double walk in wardrobe with hinged mirrored access to fitted shelves (590 only)
- Fully fitted luxury washroom with sealed shower cubicle (model specific)
- Thetford cassette toilet with independent tank and manual flush
- Access to wardrobe shelving from vanity mirror door (model specific)
- Pelmet with light and shelf (model specific)
- Microswitched chrome finish lever mixer tap
- Chrome finish shower equipment

Heating and Plumbing

- Dual fuel gas and mains 800W electric storage water heater (model specific)
- Bulkhead mounted gas regulator
- Dual fuel 3kW gas & 2kW electric space heater complete with ducted blown air heating
- Grade 2 classification for heating and thermal insulation
- Inboard semi-rigid piped fresh water system
- Large bore underslung rigid waste pipes

Electrical

New for 2005

- Colour co-ordinated 12V directional downlighters to lounge area
- Upgraded 12V cable to television point
- Solar panel plug-in provision
- TV station with modern 230V/12V sockets and coax/aerial connection
- Fully protected mains electric system with two 230V mains sockets
- 12V electrical system with one 12V socket and plug
- Halogen ceiling lights
- Halogen lighting in washroom
- 12V distribution panel
- Switchmode charger/transformer
- 25 metre mains hook-up lead

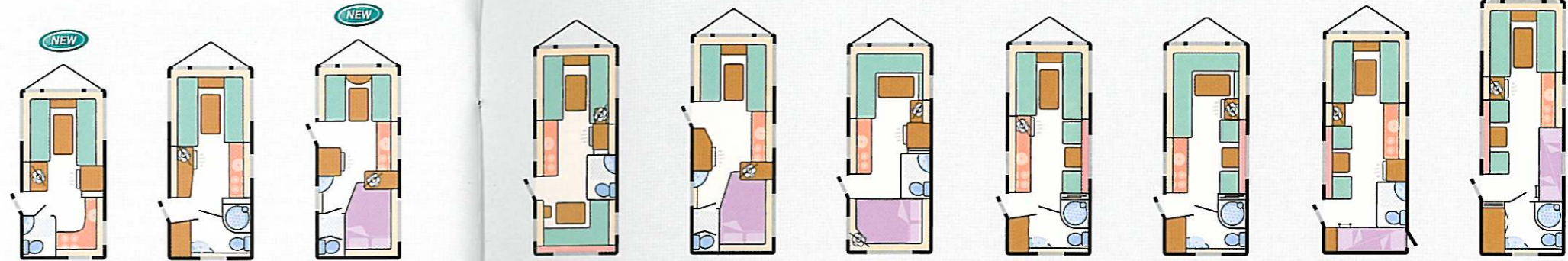
Security & safety

- Identity number etched to windows and caravan chassis
- Concealed security data chip within caravan construction
- Single key operated locks
- All models comply with European standards



Charisma

specification



Model	220	230	535	540	550	555	560	565	570	590
Berths	2	2	4	5	4	4	4	4	6	6
Number of Axles	1	1	1	1	1	1	1	1	1	2
Internal Length (at bed box height)	4.20m/13'9"	4.67m/15'4"	4.74m/15'7"	5.13m/16'10"	5.39m/17'8"	5.13m/16'10"	5.23m/17'2"	5.23m/17'2"	5.50m/18'1"	6.27m/20'7"
Overall Width	2.23m/7'4"	2.23m/7'4"	2.23m/7'4"	2.23m/7'4"	2.23m/7'4"	2.23m/7'4"	2.23m/7'4"	2.23m/7'4"	2.23m/7'4"	2.23m/7'4"
Overall Height (including TV aerial)	2.70m/8'10"	2.70m/8'10"	2.70m/8'10"	2.70m/8'10"	2.70m/8'10"	2.70m/8'10"	2.70m/8'10"	2.70m/8'10"	2.70m/8'10"	2.70m/8'10"
Overall Length	5.88m/19'3"	6.35m/20'10"	6.42m/21'1"	6.81m/22'4"	7.07m/23'2"	6.81m/22'4"	6.91m/22'8"	6.91m/22'8"	7.18m/23'7"	7.95m/26'1"
Mass in Running Order (including tolerance)	955kg/18.8cwt*	1059kg/20.8cwt	1080kg/21.3cwt	1167kg/23.0cwt*	1183kg/23.3cwt	1150kg/22.6cwt*	1173kg/23.1cwt	1153kg/22.7cwt*	1206kg/23.7cwt	1353kg/26.6cwt
Essential Habitation Equipment Payload	82kg/1.6cwt	82kg/1.6cwt	82kg/1.6cwt	82kg/1.6cwt	82kg/1.6cwt	82kg/1.6cwt	82kg/1.6cwt	82kg/1.6cwt	82kg/1.6cwt	82kg/1.6cwt
Personal Effects Payload	100kg/2.0cwt	105kg/2.1cwt	125kg/2.5cwt	139kg/2.7cwt	132kg/2.6cwt	129kg/2.5cwt	130kg/2.6cwt	130kg/2.6cwt	200kg/3.9cwt	160kg/3.1cwt
Optional Equipment Payload	4kg/0.1cwt	4kg/0.1cwt	4kg/0.1cwt	4kg/0.1cwt	4kg/0.1cwt	4kg/0.1cwt	4kg/0.1cwt	4kg/0.1cwt	4kg/0.1cwt	4kg/0.1cwt
Maximum Technical Permissible Laden Mass	1141kg/22.5cwt*	1250kg/24.6cwt	1291kg/25.5cwt	1392kg/27.4cwt*	1401kg/27.6cwt	1365kg/26.8cwt*	1389kg/27.4cwt	1369kg/27.0cwt*	1492kg/29.3cwt	1599kg/31.4cwt
Awning A/A Dimension**	8.41m/27'7"	8.88m/29'2"	8.95m/29'4"	9.34m/30'8"	9.60m/31'6"	9.34m/30'8"	9.44m/31'0"	9.44m/31'0"	9.71m/31'10"	10.48m/34'5"
Tyre Size	195/70 r14 91	195/70 r14 95	195/70 r14 95	175 r14 99	175 r14 99	175 r14 99	175 r14 99	175 r14 99	175 r14 99	175/65 r14 82

Bed sizes

Front Double [†]	208cm x 180cm/6'10" x 5'11"	208cm x 180cm/6'10" x 5'11"	208cm x 134cm/6'10" x 4'5"	208cm x 180cm/6'10" x 5'11"	208cm x 167m/6'10" x 5'6"	209cm x 139cm/6'10" x 4'7"	208cm x 180cm/6'10" x 5'11"	209cm x 139cm/6'10" x 4'7"	208cm x 180cm/6'10" x 5'11"	208cm x 180cm/6'10" x 5'11"
or One Single	190cm x 72cm/6'3" x 2'4"	180cm x 72cm/5'11" x 2'4"		190cm x 72cm/6'3" x 2'4"	190cm x 72cm/6'3" x 2'4"		190cm x 72cm/6'3" x 2'4"	190cm x 72cm/6'3" x 2'4"	180cm x 72cm/5'11" x 2'4"	180cm x 72cm/5'11" x 2'4"
and One Single	180cm x 72cm/5'11" x 2'4"	190cm x 72cm/6'3" x 2'4"		180cm x 72cm/5'11" x 2'4"	167cm x 72cm/5'6" x 2'4"		180cm x 72cm/5'11" x 2'4"	190cm x 72cm/6'3" x 2'4"	180cm x 72cm/5'11" x 2'4"	190cm x 72cm/6'3" x 2'4"
Rear Double			188cm x 138cm/6'2" x 4'6"	209cm x 133cm/6'10" x 4'4"	198cm x 138cm/6'6" x 4'6"	205cm x 133cm/6'8" x 4'4"				
Rear Bunk				194cm x 56cm/6'4" x 1'10"						
Side Single (offside)							180cm x 70cm/5'11" x 2'4"	180cm x 70cm/5'11" x 2'4"		
Side Single (nearside)									180cm x 70cm/5'11" x 2'4"	180cm x 70cm/5'11" x 2'4"
Side Bunk							178cm x 59cm/5'10" x 1'11"	178cm x 59cm/5'10" x 1'11"	178cm x 59cm/5'10" x 1'11"	178cm x 59cm/5'10" x 1'11"
Rear Lower Bunk									184cm x 62cm/6'0" x 2'1"	
Rear Upper Bunk									184cm x 60cm/6'0" x 2'0"	
Side Lower Bunk										180cm x 56cm/5'11" x 1'10"
Side Upper Bunk										180cm x 58cm/5'11" x 1'11"

* Estimated weight. † Double bed size is quoted with wrap round seating.

** Note on awning sizes: Due to the varying awning designs and sizes the awning sizes given are approximate only. Specific awning sizes must be confirmed by your dealer or the awning manufacturer prior to purchase.

Your Local Dealer



This brochure does not constitute an offer by Swift Group Limited (Swift). Swift reserves the right to alter specifications and prices at any time as materials and conditions demand. Distributors and dealers sell Swift products on their own account and not as agents of Swift. Accordingly, they have no authority to bind Swift or to make any representation or undertaking whatsoever on behalf of Swift.



INVESTOR IN PEOPLE

The touring caravans described in this brochure are designated by their model year. The model year runs from 1 September to 31 August and the despatch of 2005 models will have commenced on or after 1 September 2004.

All props are for photographic purposes only and are not included in the specification

Issued September 2004

Cars courtesy of Volvo Cars UK Limited



Swift Caravans
Dunswell Road, Cottingham,
East Yorkshire HU16 4JX.
Tel: 01482 847332 Fax: 01482 841042
email: enquiry@swiftleisure.co.uk
web site: www.swiftcaravans.co.uk
A MEMBER OF THE SWIFT GROUP

Quality with Style