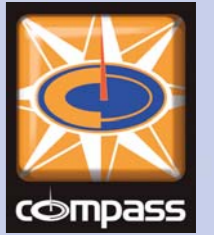


SUPERB
2008
2008 Compass Touring Caravan Collection
COLLECTION

CORONA *Club*

ΩMEGA

Rallye



An unforgettable sunset ✨

✨ Find it with a Compass

Whether it's an idyllic sunset, a romantic walk on the beach or an unforgettable family experience, you know exactly what you want from a touring holiday.

Built by The Explorer Group Ltd, the only UK Caravan Manufacturer accredited by the Institute of Mechanical Engineers, Compass offers traditional build quality combined with modern features.

With its charming and tasteful interior, you can be assured that the view inside is just as beautiful as out.

So if you know where you are going, don't wait any longer to find your ideal caravan in our new 2008 collection.

FIND IT WITH A COMPASS



Omega 550



2008 Compass Touring Caravan Collection

With over 28 years experience in the caravan market, Compass, a well-established brand, is offering a superb 2008 collection. You can't fail to admire the new generation of Corona Club, a completely new range. While you will appreciate the new stylish and tasteful makeover of the Omega range, you will be seduced by our stunning Rallye models.

Every Compass touring caravan complies with relevant European standards and UK Road Vehicle Regulations.

With warm and inviting interior layouts from 2 to 6 berth, whichever Compass you choose you can be sure to enjoy the experience of caravanning wherever you like!



Corona Club 524



Corona Club 362



Omega 525



Rallye 634

SUPERB
2008
COLLECTION



FULL OF PANACHE



Corona Club 624



Corona Club 624



Corona Club 362

Compass Corona Club

Designed by our experienced team of engineers, the Corona Club is a brand new range competing directly at the Club Class level.

Full of panache, the nine Corona Club models are 2.24m (7'4") wide giving you plenty of space and superb value for money.

Stylish and classic, the seven single axle and two twin axle models offer you a huge choice of layouts and will answer any of your needs.

Exterior Styling

With balanced high-powered silver alloy wheels, steel spare wheel carrier and recessed jockey wheel with nose weight indicator fitted as standard, the nine Corona Club models produce an outstanding impression.

The new Compass family graphic design, full height GRP front panel, ABS rear panel and chrome injection moulded badge give this new range a smooth and distinguished exterior look.





Corona Club 462



Corona Club 524

Interior Living Space

The contemporary curved interior overhead locker doors and the new classic Krypto upholstery contribute to give a homely atmosphere to the Compass Corona Club range.

An extension to the occasional table top on the front chest of drawers simply slides out from underneath and the top drops neatly into place.

Music is at the touch of a button thanks to the Sony CD Radio with I-Pod/MP3 player connectivity.

The Kitchen

How to make preparation of any of your meals enjoyable? Simple, make sure you have a Corona Club kitchen. Together with the large Spinflo 3 burner hob high-speed multi-function burner, new 700W microwave and Prima Mark3 oven, the cooking of any meal becomes a real pleasure!

Storing food in the fridge couldn't be easier with the new fully electronic Thetford 113ltr fridge with LCD display.

The Washroom

The spacious end bathroom (462, 524 & 624 models only) includes a stylish half inset basin with contemporary polished chrome fittings and a fully circular shower enclosure.

Contemporary style drop down Jomal washroom unit (all layouts except 462, 524 & 624) and Thetford electronic flush toilet are standard equipment.



Corona Club 362



Corona Club 524



Corona Club 524



Corona Club 524

STYLISH & CLASSIC



All New Compass Corona Club Range



362 - 2 Berth

Shipping Length 5475mm / 18'0"
M.T.P.L.M. 1150kgs / 22.58cwt
Width (Ext.) 2236mm / 7'4"
Bed Options Front: 2 x Single
OR 1 x Double



462 - 2 Berth

Shipping Length 6402mm / 21'0"
M.T.P.L.M. 1285kgs / 25.24cwt
Width (Ext.) 2236mm / 7'4"
Bed Options Front: 2 x Single
OR 1 x Double



474 - 4 Berth

Shipping Length 6482mm / 21'3"
M.T.P.L.M. 1335kgs / 26.22cwt
Width (Ext.) 2236mm / 7'4"
Bed Options Front: 1 x Double
Rear: 1 x Double Fixed Bed



505 - 5 Berth

Shipping Length 7341mm / 24'1"
M.T.P.L.M. 1500kgs / 29.46cwt
Width (Ext.) 2236mm / 7'4"
Bed Options Front: 2 x Single OR 1 x Double
Rear: 1 x Double, 1 x Bunk



524 - 4 Berth

Shipping Length 7095mm / 23'3"
M.T.P.L.M. 1420kgs / 27.89cwt
Width (Ext.) 2236mm / 7'4"
Bed Options Front: 2 x Single OR 1 x Double
Dinette: 1 x Single, 1 x Bunk



544 - 4 Berth

Shipping Length 7341mm / 24'1"
M.T.P.L.M. 1470kgs / 28.87cwt
Width (Ext.) 2236mm / 7'4"
Bed Options Front: 1 x Double
Rear: 1 x Double Fixed Bed



556 - 6 Berth

Shipping Length 7178mm / 23'6"
M.T.P.L.M. 1500kgs / 29.46cwt
Width (Ext.) 2236mm / 7'4"
Bed Options Front: 2 x Single OR 1 x Double
Dinette: 1 x Single, 1 x Bunk
Rear: 2 x Single Fixed Bunks



624 - 4 Berth

Shipping Length 7892mm / 25'10"
M.T.P.L.M. 1630kgs / 32.01cwt
Width (Ext.) 2236mm / 7'4"
Bed Options Front: 1 x Double
Rear: 1 x Double Fixed Bed



626 - 6 Berth

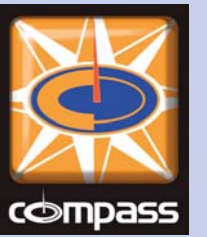
Shipping Length 7892mm / 25'10"
M.T.P.L.M. 1700kgs / 33.39cwt
Width (Ext.) 2236mm / 7'4"
Bed Options Front: 2 x Single OR 1 x Double
Dinette: 1 x Single, 1 x Bunk
Rear: 1 x Double Fixed Bed



Corona Club Krypto Upholstery



Corona Club 362



CORONA CLUB TECHNICAL SPECIFICATIONS

Model		362	462	474	505	524	544	556	624	626	
Number of Berths		2	2	4	5	4	4	6	4	6	
Interior Length		3733mm / 12'3"	4660mm / 15'3"	4740mm / 15'6"	5599mm / 18'5"	5344mm / 17'6.5"	5599mm / 18'5"	5436mm / 17'10"	6150mm / 20'1"	6150mm / 20'1"	
Exterior body length	mm / feet	4554mm / 15'0"	5481mm / 18'0"	5561mm / 18'3"	6420mm / 21'1"	6165mm / 20'3"	6420mm / 21'1"	6400mm / 21'0"	6971mm / 22'10"	6971mm / 22'10"	
Shipping Length	mm / feet	5475mm / 18'0"	6402mm / 21'0"	6482mm / 21'3"	7341mm / 24'1"	7095mm / 23'3"	7341mm / 24'1"	7178mm / 23'6"	7892mm / 25'10"	7892mm / 25'10"	
Overall Width	mm / feet	2236mm / 7'4"	2236mm / 7'4"	2236mm / 7'4"	2236mm / 7'4"	2236mm / 7'4"	2236mm / 7'4"	2236mm / 7'4"	2236mm / 7'4"	2236mm / 7'4"	
Overall Height	mm / feet	2726mm / 8'11"	2726mm / 8'11"	2726mm / 8'11"	2726mm / 8'11"	2726mm / 8'11"	2726mm / 8'11"	2726mm / 8'11"	2726mm / 8'11"	2726mm / 8'11"	
Maximum Headroom	mm / feet	1908mm / 6'3"	1908mm / 6'3"	1908mm / 6'3"	1908mm / 6'3"	1908mm / 6'3"	1908mm / 6'3"	1908mm / 6'3"	1908mm / 6'3"	1908mm / 6'3"	
Interior Width	mm / feet	2120mm / 6'11"	2120mm / 6'11"	2120mm / 6'11"	2120mm / 6'11"	2120mm / 6'11"	2120mm / 6'11"	2120mm / 6'11"	2120mm / 6'11"	2120mm / 6'11"	
Wheel Rim		5.5J x 14	5.5J x 14	5.5J x 14	5.5J x 14	5.5J x 14	5.5J x 14	5.5J x 14	5.5J x 14	5.5J x 14	
Tyre Size		175 R14 99	175 R14 99	175 R14 99	185 R14 102	175 R14 99	185 R14 102	185 R14 102	175/65 R14 86	175/65 R14 86	
Tyre Pressure at MTPLM in psi		45psi	53psi	55psi	63psi	60psi	56psi	56psi	34psi	34psi	
Brake Size		200/50	200/50	200/50	250/40	200/50	250/40	250/40	200/50	200/50	
Awning Sizes Ground to Ground		7980mm / 26'2"	8908mm / 29'3"	8998mm / 29'6"	9950mm / 32'1"	9590mm / 31'5"	9950mm / 32'1"	9680mm / 31'9"	10370mm / 34'1"	10370mm / 34'1"	
Bed Sizes mm / feet	Front Beds	2 x Single 1830mm x 718mm 6'0" x 2'3" or 1 x Double 2070mm x 1370mm 6'9" x 4'6"	2 x Single 1830mm x 718mm 6'0" x 2'3" or 1 x Double 2070mm x 1370mm 6'9" x 4'6"	1 x Double 2070mm x 1400mm 6'9" x 4'7"	2 x Single 1830mm x 718mm 6'0" x 2'3" or 1 x Double 2070mm x 1370mm 6'9" x 4'6"	2 x Single 1830mm x 718mm 6'0" x 2'3" or 1 x Double 2070mm x 1370mm 6'9" x 4'6"	1 x Double 2070mm x 1138mm 6'9" x 3'9"	2 x Single 1830mm x 718mm 6'0" x 2'3" or 1 x Double 2070mm x 1370mm 6'9" x 4'6"	1 x Double 2070mm x 1138mm 6'9" x 3'9"	2 x Single 1830mm x 718mm 6'0" x 2'3" or 1 x Double 2070mm x 1370mm 6'9" x 4'6"	2 x Single 1830mm x 718mm 6'0" x 2'3" or 1 x Double 2070mm x 1370mm 6'9" x 4'6"
	Side Dinette	Not Applicable	Not Applicable	Not Applicable	Not Applicable	1 x Single 1800mm x 630mm 5'11" x 2'1" and 1 x Lift up bunk 1632mm x 570mm 5'2" x 1'10.5"	1 x Single 1800mm x 630mm 5'11" x 2'1" and 1 x Lift up bunk 1632mm x 570mm 5'2" x 1'10.5"	1 x Single 1800mm x 630mm 5'11" x 2'1" and 1 x Lift up bunk 1632mm x 570mm 5'2" x 1'10.5"	1 x Single 1800mm x 630mm 5'11" x 2'1" and 1 x Lift up bunk 1632mm x 570mm 5'2" x 1'10.5"	1 x Single 1800mm x 630mm 5'11" x 2'1" and 1 x Lift up bunk 1632mm x 570mm 5'2" x 1'10.5"	
Bed Sizes mm / feet	Rear Beds	Not Applicable	Not Applicable	Fixed Bed 1 x Double 1830mm x 1370mm 6'0" x 4'6"	1 x Double 1848mm x 1280mm 6'1" x 4'2" and 1 x Lift up bunk 1848mm x 570mm 6'1" x 1'10.5"	Not Applicable	Fixed Bed 1 x Double 1830mm x 610mm 6'0" x 4'6"	Fixed Bunks 2 x Single 1830mm x 610mm 6'0" x 2'0"	Fixed Bed 1 x Double 1830mm x 1370mm 6'0" x 4'6"	Fixed Bed 1 x Double 1830mm x 1370mm 6'0" x 4'6"	
M.T.P.L.M.	kgs / cwt	1150kgs / 22.58cwt	1285kgs / 25.24cwt	1335kgs / 26.22cwt	1500kgs / 29.46cwt	1420kgs / 27.89cwt	1470kgs / 28.87cwt	1500kgs / 29.46cwt	1630kgs / 32.01cwt	1700kgs / 33.39cwt	
Mass in Running Order	kgs / cwt	1006kgs / 19.76cwt	1127kgs / 22.14cwt	1161kgs / 22.80cwt	1307kgs / 25.67cwt	1235kgs / 24.25cwt	1287kgs / 25.28cwt	1297kgs / 25.47cwt	1442kgs / 28.33cwt	1487kgs / 29.20cwt	
Essential Habitation Equip	kgs / cwt	48kgs / 0.94cwt	53kgs / 1.04cwt	48kgs / 0.94cwt	48kgs / 0.94cwt	53kgs / 1.04cwt	48kgs / 0.94cwt	48kgs / 0.94cwt	48kgs / 0.94cwt	53kgs / 1.04cwt	
Maximum User Payload	kgs / cwt	144kgs / 2.83cwt	158kgs / 3.1cwt	174kgs / 3.42cwt	193kgs / 3.79cwt	185cwt / 3.63cwt	183kgs / 3.59cwt	203kgs / 3.98cwt	188kgs / 3.69cwt	213kgs / 4.18cwt	
Maximum Hitch Weight	kgs / cwt	100kgs / 1.96cwt	100kgs / 1.96cwt	100kgs / 1.96cwt	100kgs / 1.96cwt	100kgs / 1.96cwt	100kgs / 1.96cwt	100kgs / 1.96cwt	100kgs / 1.96cwt	100kgs / 1.96cwt	
Optional Equipment payload	kgs / cwt	0	0	0	0	0	0	0	0	0	

A manufacturing tolerance has been added to Mass in Running Order before calculating the Maximum User Payload.
Maximum User Payload includes Essential Habitation Equipment, Personal Effects and Optional Equipment.
Note 1: Please take care to ensure that you have allowed for the masses of all items you intend to carry in the caravan.
Note 2: Warning: Under no circumstances must the Technical Permissible Laden Mass of the caravan be exceeded.
Note 3: All data is calculated using metric weights and measurements. The Imperial figures quoted are conversions thereof.



Omega 524



Omega 525

Compass Omega

Next step up from the Corona Club, the Omega range offers a host of improvements that give a truly impressive specification.

Two new layouts have been added to the Omega range: the new 525 five berth and the new 550 fixed island bed model complete with a spacious separate shower enclosure.

All six Omega touring caravans are 2.29m (7'6") wide giving you plenty of space and superb value for money.

You will benefit from even more security with the high level Autowatch security alarm system fitted as standard.

Exterior Styling

A smart look is given to the Omega range by the new Compass family graphic design, full height GRP front panel and ABS rear panel along with privacy windows.

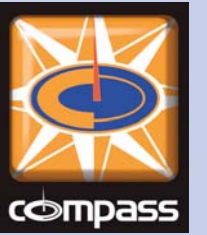
The stunning Seitz side and rear windows provide privacy, a cooler caravan interior and additional protection from the sunlight for upholstery and curtain fabrics.

The Omega also comes with 'Big Feet' corner steadies and new Hartal entrance door with privacy window and integrated bin.

Balanced high-powered silver alloy wheels, steel spare wheel carrier and recessed jockey wheel with nose weight indicator now come as standard with each model of the Omega range.

ΩMEGA

IMPRESSIVE SPECIFICATION



Omega 482

Interior Living Space

The Jungi upholstery, curtains and loose removable carpets create a tasteful and friendly interior, while the solid wood decorative locker doors, Aswald Ash internal veneered furniture and wallboards give the Omega a prestigious look.

An occasional table slides out of the front chest of drawers creating extra space to perhaps enjoy your breakfast.

Enjoy music at any time with the Sony CD Radio with I-Pod/MP3 player connectivity and appreciate a relaxing night with the 'So Comfortable' domestic quality pocket sprung mattress.



Omega 550

The Kitchen

The combination of the Spinflo 3 burner hob with large high-speed multi-function burner, new 700W microwave and Prima Mark3 oven gives a greater range of options for cooking.

The new Argent stainless steel linen effect sink has an integrated drainer, is scratch resistant and comes complete with a washing up basin.

The new fully electronic Thetford 113ltr fridge complete with LCD display provides you with plenty of space to store your food.



Omega 482

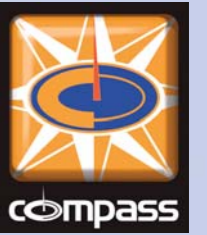


Omega 525



Omega 524

Compass Omega Range



482 - 2 Berth

Shipping Length 6550mm / 21'6"
 M.T.P.L.M. 1385kgs / 27.20cwt
 Width (Ext.) 2286mm / 7'6"
 Bed Options *Front: 2 x Single OR 1 x Double*



524 - 4 Berth

Shipping Length 7066mm / 23'2"
 M.T.P.L.M. 1525kgs / 29.95cwt
 Width (Ext.) 2286mm / 7'6"
 Bed Options *Front: 2 x Single OR 1 x Double
 Side Dinette: 1 x Single, 1 x Bunk*

NEW



525 - 5 Berth

Shipping Length 7248mm / 23'9"
 M.T.P.L.M. 1570kgs / 30.83cwt
 Width (Ext.) 2286mm / 7'6"
 Bed Options *Front: 1 x Double
 Rear: 1 x Double, 1 x Bunk*



540 - 4 Berth

Shipping Length 7248mm / 23'9"
 M.T.P.L.M. 1560kgs / 30.64cwt
 Width (Ext.) 2286mm / 7'6"
 Bed Options *Front: 2 x Single
 Rear: 1 x Double Fixed Bed*

NEW



544 - 4 Berth

Shipping Length 7319mm / 24'1"
 M.T.P.L.M. 1560kgs / 30.64cwt
 Width (Ext.) 2286mm / 7'6"
 Bed Options *Front: 1 x Double
 Rear: 1 x Double Fixed Bed*



550 - 4 Berth

Shipping Length 7319mm / 24'1"
 M.T.P.L.M. 1535kgs / 30.15cwt
 Width (Ext.) 2286mm / 7'6"
 Bed Options *Front: 2 x Single
 Rear: 1 x Double Fixed Bed*



Omega Jungi Upholstery



Omega 525

OMEGA TECHNICAL SPECIFICATIONS

Model		482	524	525	540	544	550
Number of Berths		2	4	5	4	4	4
Interior Length	mm / feet	4828mm / 15'10"	5344mm / 17'6"	5526mm / 18'2"	5526mm / 18'2"	5599mm / 18'5"	5599mm / 18'5"
Exterior body length	mm / feet	5660mm / 18'8"	6176mm / 20'3"	6347mm / 20'10"	6347mm / 20'10"	6429mm / 21'	6429mm / 21'
Shipping Length	mm / feet	6550mm / 21'6"	7066mm / 23'2"	7248mm / 23'9"	7248mm / 23'9"	7319mm / 24'1"	7319mm / 24'1"
Overall Width	mm / feet	2286mm / 7'6"	2286mm / 7'6"	2286mm / 7'6"	2286mm / 7'6"	2286mm / 7'6"	2286mm / 7'6"
Overall Height	mm / feet	2726mm / 8'11"	2726mm / 8'11"	2726mm / 8'11"	2726mm / 8'11"	2726mm / 8'11"	2726mm / 8'11"
Maximum Headroom	mm / feet	1908mm / 6'3"	1908mm / 6'3"	1908mm / 6'3"	1908mm / 6'3"	1908mm / 6'3"	1908mm / 6'3"
Interior Width	mm / feet	2150mm / 7'1"	2150mm / 7'1"	2150mm / 7'1"	2150mm / 7'1"	2150mm / 7'1"	2150mm / 7'1"
Wheel Rim		5.5J x 14	5.5J x 14	5.5J x 14	5.5J x 14	5.5J x 14	5.5J x 14
Tyre Size		175 R14 99	185 R14 102	185 R14 102	185 R14 102	185 R14 102	185 R14 102
Tyre Pressure at MTPLM in psi		62	62	62	62	62	62
Brake Size		200/50	250/40	250/40	250/40	250/40	250/40
Awning Sizes Ground to Ground		9075mm / 29'9"	9590mm / 31'5"	9770mm / 32'1"	9770mm / 32'1"	9950mm / 32'6"	9950mm / 32'6"
Bed Sizes mm / feet	Front Beds	2 x Single 1880mm x 720mm 6'2" x 2'4" or 1 x Double 2074mm x 1480mm 6'10" x 4'10"	2 x Single 1880mm x 720mm 6'2" x 2'4" and 1 x Double 2074mm x 1480mm 6'10" x 4'10"	1 x Double 2140mm x 1354mm 7'0" x 4'5"	1 x Single 2140mm x 720mm 7'0" x 2'4" and 1 x Single 2113mm x 720mm 6'11" x 2'4"	1 x Double 2074mm x 1200mm 6'10" x 3'11"	1 x Single 1813mm x 720mm 6'0" x 2'4" and 1 x Single 2113mm x 720mm 6'11" x 2'4"
	Side Dinette	Not Applicable	1 x Single 1800mm x 635mm 5'11" x 2'1" and 1 x Lift up bunk 1650mm x 570mm 5'5" x 1'10.5"	Not Applicable	Not Applicable	Not Applicable	Not Applicable
Bed Sizes mm / feet	Rear Beds	Not Applicable	Not Applicable	1 x Double 2074mm x 1300mm 6'10" x 4'4" and 1 x Lift up bunk 1956mm x 570mm 6'5" x 1'10.5"	Fixed Bed 1 x Double 1930mm x 1375mm 6'4" x 4'5"	Fixed Bed 1 x Double 1830mm x 1270mm 6'0" x 4'2"	Fixed Bed 1 x Double 1843mm x 1346mm 6'1" x 4'5"
M.T.P.L.M.	kgs / cwt	1385kgs / 27.20cwt	1525kgs / 29.95cwt	1570kgs / 30.83cwt	1560kgs / 30.64cwt	1560kgs / 30.64cwt	1535kgs / 30.15cwt
Mass inRunning Order	kgs / cwt	1225kgs / 24.06cwt	1340kgs / 26.32cwt	1373kgs / 26.9cwt	1373kgs / 26.96cwt	1372kgs / 26.96cwt	1347kgs / 26.45cwt
Essential Habitation Equip	kgs / cwt	53kgs / 1.04cwt	53kgs / 1.04cwt	53kgs / 1.04cwt	53kgs / 1.04cwt	53kgs / 1.04cwt	53kgs / 1.04cwt
Maximum User Payload	kgs / cwt	160kgs / 3.14cwt	185kgs / 3.63cwt	197kgs / 3.86cwt	187kgs / 3.67cwt	188kgs / 3.69cwt	188kgs / 3.69cwt
Maximum Hitch Weight	kgs / cwt	100kgs / 1.96cwt	100kgs / 1.96cwt	100kgs / 1.96cwt	100kgs / 1.96cwt	100kgs / 1.96cwt	100kgs / 1.96cwt
Optional Equipment payload	kgs / cwt	0	0	0	0	0	0

A manufacturing tolerance has been added to **Mass in Running Order** before calculating the **Maximum User Payload**.
Maximum User Payload includes **Essential Habitation Equipment**, **Personal Effects** and **Optional Equipment**.
Note 1: Please take care to ensure that you have allowed for the masses of all items you intend to carry in the caravan.
Note 2: Warning: Under no circumstances must the Technical Permissible Laden Mass of the caravan be exceeded.
Note 3: All data is calculated using metric weights and measurements. The Imperial figures quoted are conversions thereof.



Omega 550



Omega 525



Rallye 634

ELEGANT &
DISTINCTIVE

Compass Rallye

Enjoy an authentic experience of luxury with our four exclusive Rallye twin axle models.

The top of the range Rallye is the best equipped and most luxurious of the Compass range.

Elegant and distinctive, the Rallye range attracts connoisseurs looking for incredible and seductive caravans. While the superb looks and striking new interior makeover of the Compass Rallye continues to provide outstanding value for money.



Rallye 634

Exterior Styling

The new Compass family graphic design, full height GRP panel and ABS rear panel provide the range with a remarkable exterior look.

The stunning Seitz side and rear flush fitting privacy windows help to reflect rays from the sun that damage upholstery and can assist in keeping the interior cooler on the sunniest of days. Glare from the sun is also substantially reduced with minimal effect on the amount of actual light entering the vehicle. In addition, they allow you to see out but prevent people from seeing in.

All Rallyes are built on the impressive BPW Swing V-Tech chassis with a Winterhoff WS3000 stabiliser and easy action handbrake, balanced alloy wheels and a clever nose weight indicator as standard.

Outside you will also find a highly reflective rear visibility panel, heavy-duty corner steadies, an awning warmer and an exterior gas barbecue point.

The exterior access door opens to reveal a handy 230v output socket, ideal for when you want to watch TV in your awning.

Rallye



Interior Living Space

The luxurious new Avignon upholstery as well as the Aswald Ash veneer furniture and wallboard reinforce the elegance of the Rallye range and give a more distinctive interior style. All worktops and occasional table tops are finished with Formica high pressure decorative laminate.

Fixed bed models feature the exclusive 'So Comfortable' mattress, which ensures you to have the best night's sleep you will ever have in a caravan.

The Sony CD/Radio features I-Pod/MP3 connectivity.

The Kitchen

The Spinflo 3 burner hob with high-speed multi-function burner can accommodate large saucepans up to 25cm, round and flat bottom woks up to 36cm as well as frying pans up to 24cm. Add to this the Prima Mark3 oven and new stainless steel finish 700W microwave supplied as standard and everything from a simple cooked breakfast to a full evening meal is easily catered for.

The new Argent stainless steel linen effect sink has an integrated drainer, is scratch resistant and comes complete with a washing up basin.

Storing food in the fridge is easy with the new fully electronic Thetford 113ltr fridge with LCD display or the 150ltr Dometic 765 1L fridge freezer.



Rallye 650



Rallye 644



LUXURIOUS INTERIORS



Rallye 644



Rallye 650



Rallye 650

Rallye

Compass Rallye Range



634 - 4 Berth

Shipping Length 8049mm / 26'5"
 M.T.P.L.M. 1900kgs / 37.32cwt
 Width (Ext.) 2286mm / 7'6"
 Bed Options *Front: 1 x Double
 Rear: 1 x Double Fixed Bed*



644 - 4 Berth

Shipping Length 8049mm / 26'5"
 M.T.P.L.M. 1900kgs / 37.32cwt
 Width (Ext.) 2286mm / 7'6"
 Bed Options *Front: 2 x Single OR 1 x Double
 Rear: 1 x Double Fixed Bed*



650 - 4 Berth

Shipping Length 8049mm / 26'5"
 M.T.P.L.M. 1900kgs / 37.32cwt
 Width (Ext.) 2286mm / 7'6"
 Bed Options *Front: 1 x Double
 Rear: 2 x Single Fixed Beds*



636 - 6 Berth

Shipping Length 8049mm / 26'5"
 M.T.P.L.M. 1900kgs / 37.32cwt
 Width (Ext.) 2286mm / 7'6"
 Bed Options *Front: 1 x Double
 Rear: 2 x Single OR 1 x Double, 2 x Bunks*



Rallye Avignon Upholstery



Rallye 644



Rallye 634

RALLYE TECHNICAL SPECIFICATIONS

Model		634	636	644	650
Number of Berths		4	6	4	4
Interior Length	mm / feet	6325mm / 20'9"	6325mm / 20'9"	6325mm / 20'9"	6325mm / 20'9"
Exterior body length	mm / feet	6998mm / 23'	6998mm / 23'	6998mm / 23'	6998mm / 23'
Shipping Length	mm / feet	8049mm / 26'5"	8049mm / 26'5"	8049mm / 26'5"	8049mm / 26'5"
Overall Width	mm / feet	2286mm / 7'6"	2286mm / 7'6"	2286mm / 7'6"	2286mm / 7'6"
Overall Height	mm / feet	2600mm / 8'6.5"	2600mm / 8'6.5"	2600mm / 8'6.5"	2600mm / 8'6.5"
Maximum Headroom	mm / feet	1908mm / 6'3"	1908mm / 6'3"	1908mm / 6'3"	1908mm / 6'3"
Interior Width	mm / feet	2150mm / 7'1"	2150mm / 7'1"	2150mm / 7'1"	2150mm / 7'1"
Wheel Rim		5.5J x 14	5.5J x 14	5.5J x 14	5.5J x 14
Tyre Size		175/65 R 14 86	175/65 R 14 86	175/65 R 14 86	175/65 R 14 86
Tyre Pressure at MTPLM in psi		40	40	40	40
Brake Size		200/50	200/50	200/50	200/50
Awning Sizes Ground to Ground		10570mm / 34'8"	10570mm / 34'8"	10570mm / 34'8"	10570mm / 34'8"
Bed Sizes mm / feet	Front Beds	1x Double 2140mm x 1344mm 7'0" x 4'4"	1x Double 2140mm x 1344mm 7'0" x 4'4"	2x Single 1830mm x 720mm 6'0" x 2'4" or 1x Double 2140mm x 1430mm 7'0" x 4'7"	1x Double 2140mm x 1344mm 7'0" x 4'4"
Bed Sizes mm / feet	Rear Beds	Fixed bed 1x Double 1830mm x 1270mm 6'0" x 4'2"	2x Single 1830mm x 690mm 6' x 2'3" or 1x Double 2014mm x 1430mm 6'7" x 4'8" and 2x Lift up bunks 1650mm x 570mm 5'4" x 1'10.5"	Fixed Bed 1x Double 1843mm x 1346mm 6'1" x 4'5"	Fixed Beds 2 x Single 1906mm x 790mm 6'4" x 2'7"
M.T.P.L.M.	kgs / cwt	1900kgs / 37.32cwt	1900kgs / 37.32cwt	1900kgs / 37.32cwt	1900kgs / 37.32cwt
Mass in Running Order	kgs / cwt	1639kgs / 31.29cwt	1619kgs / 31.82cwt	1639kgs / 31.29cwt	1639kgs / 31.29cwt
Essential Habitation Equip	kgs / cwt	93kgs / 1.82cwt	93kgs / 1.82cwt	93kgs / 1.82cwt	93kgs / 1.82cwt
Maximum User Payload	kgs / cwt	261kgs / 5.12cwt	281kgs / 5.51cwt	261kgs / 5.12cwt	261kgs / 5.12cwt
Maximum Hitch Weight	kgs / cwt	100kgs / 1.96cwt	100kgs / 1.96cwt	100kgs / 1.96cwt	100kgs / 1.96cwt
Optional Equipment payload	kgs / cwt	28kgs / 0.55cwt	28kgs / 0.55cwt	28kgs / 0.55cwt	28kgs / 0.55cwt

A manufacturing tolerance has been added to **Mass in Running Order** before calculating the **Maximum User Payload**.
Maximum User Payload includes **Essential Habitation Equipment**, **Personal Effects** and **Optional Equipment**.
Note 1: Please take care to ensure that you have allowed for the masses of all items you intend to carry in the caravan.
Note 2: Warning: Under no circumstances must the Technical Permissible Laden Mass of the caravan be exceeded.
Note 3: All data is calculated using metric weights and measurements. The Imperial figures quoted are conversions thereof.



Corona Club



Omega



Rallye

Compass Range Comparison

EXTERIOR	Corona Club	Omega	Rallye
Full height GRP front panel	NEW	NEW	✓
Large gas locker door with 2 gas struts	NEW	✓	✓
Full height ABS rear panel	NEW	✓	✓
Aluminium distinctive side skirts	NEW	X	X
Recessed jockey wheel with nose weight indicator	NEW	NEW	✓
Maximum width 7'6" (2286mm) wide	X	✓	✓
Body shell 7'4" exterior width	NEW	X	X
Exterior graphics	NEW	NEW	NEW
Compass Chrome effect Injection moulded badge	NEW	X	X
Exterior high level brake light	X	✓	✓
Jokon LED high level brake light	NEW	X	X
Carluna Mark 2 (Red) rear light clusters	NEW	✓	✓
High level marker Light	NEW	✓	✓
Jokon awning light	NEW	✓	✓
Stainless steel grab handles front and rear	NEW	✓	✓
BPW Swing V-Tec chassis	NEW	✓	✓
ABS hitch cover	NEW	✓	✓
Easy action handbrake	NEW	✓	✓
Winterhoff WS3000 stabiliser (Standard Fit)	NEW	✓	✓
Big Feet corner steadies	X	NEW	✓
High Powered Silver alloy wheels with new branded brushed metal wheel centres	NEW	NEW	NEW
Balanced Alloy wheels	NEW	✓	✓
Steel spare wheel complete with carrier	NEW	✓	✓
Gas bottle storage - Designed to take the new BP Gas Light bottle and traditional steel bottle	NEW	✓	✓
Ellbee one piece exterior door with window & waste bin	X	X	✓
Hartal entrance door 2 piece with privacy window & metal handle	NEW	NEW	X
Polyplastic 4.26 double glazed flush fit front windows	X	✓	✓
Polyplastic contoured front windows	NEW	X	X
Polyplastic series 4.28 side and rear windows	NEW	X	X
Seitz series S6.4 privacy glass side & rear windows c/w cassette blinds and fly screens	X	✓	✓
Large rear exterior underbed access door (Except island bed models)	NEW	✓	✓
INTERIOR	Corona Club	Omega	Rallye
Hartal integral entrance door bin with lid	NEW	NEW	X
Horrex easy slide full door flyscreen	NEW	✓	X
Aswald ash furniture	NEW	✓	✓
Aswald ash wallboard	X	✓	✓
Andaman Silk wallboard	NEW	X	X
Ella yellow bathroom wallboard	NEW	NEW	NEW
Lambourn ceiling material	NEW	NEW	NEW
Stainless Steel effect kitchen wallboard	NEW	✓	✓
Upholstery	NEW	NEW	NEW
Loose lay removable carpet	NEW	✓	✓
Black door mat and tray with Compass inset decal	NEW	✓	✓
Horrex folding doors	NEW	✓	✓
Curved interior doors	NEW	✓	✓
Drop down bed box doors to front dinette	NEW	✓	✓
Pocket sprung mattress with NEW Petra lining fabric (Fixed bed models only)	X	NEW	NEW
One piece double bed, sprung mattress with NEW Aden lining fabric (Fixed double beds only)	NEW	X	X

INTERIOR (CONT.)	Corona Club	Omega	Rallye
One piece metal bed frame c/w easy lift gas struts (Fixed bed models only - NEW Rallye 650)	NEW	✓	✓
Slide out table extension (Not in L shaped lounges)	NEW	✓	✓
Formica high pressure decorative laminate to all furniture work tops and tables	NEW	NEW	NEW
KITCHEN	Corona Club	Omega	Rallye
Thetford 113ltr (Gross capacity) fridge fully electronic with LCD	NEW	NEW	NEW
Dometic 7651 L 150ltr electronic Fridge Freezer (All Rallye layouts except 636)	X	X	✓
700w Microwave stainless steel finish complete with surround/ventilation system	NEW	NEW	NEW
Domestic style stainless steel framed Spinflo Midi Prima Oven Unit	NEW	X	X
Domestic style stainless steel framed Spinflo Midi Prima Oven Unit with Illumination & 2 shelves	X	NEW	NEW
Spinflo 3 burner hob with large high-speed multi-function burner	NEW	✓	✓
Argent stainless steel sink & Drainer	NEW	NEW	NEW
Dimatec Metal Domestic style kitchen & bathroom taps	NEW	NEW	NEW
Chinchilla glass sink & hob covers (Can be used as a cutting surface)	NEW	✓	✓
Bespoke silver wash bowl	NEW	✓	✓
Lift up kitchen worktop extension on 474 / 626 Rallye 634 / 650 models	NEW	✓	✓
Adjustable cutlery tray	NEW	✓	✓
Chrome cup and plate rack	X	✓	✓
Cup & separate plate rack	NEW	X	X
WASHROOM	Corona Club	Omega	Rallye
Shower riser plinth (362, 505 & 556 only)	NEW	X	X
Jomal space saving bathroom vanity (All layouts except 462, 524 & 624)	NEW	X	X
Domestic style half inset basin (462, 524 & 624 layouts only)	NEW	X	X
Circular shower cubicle (462, 482, 524, 624, 634 & 650 layouts only)	NEW	✓	✓
Fully lined shower cubicle with Domestic style shower door (Except 482, 524, 634 & 650 layouts)	X	NEW	NEW
Door aluminium frame (All layouts except 462, 524 & 624)	NEW	X	X
Roman blind to end washroom models	X	NEW	NEW
Lever lock on toilet doors	NEW	✓	✓
Contemporary polished chrome washroom fittings	NEW	NEW	NEW
Dimatec Metal Shower/head & hose	NEW	NEW	NEW
Anti-bacterial non-slip shower mat	NEW	NEW	NEW
Thetford electronic flush swivel cassette toilet (Except Corona 362, 474, 505, 544, 556 & 626)	NEW	✓	✓
Thetford electronic toilet with easy use waste cassette (Except 462, 524 & 624 layouts)	NEW	X	X
PLUMBING & HEATING	Corona Club	Omega	Rallye
Truma Ultraheat Piezo fire	NEW	X	X
Truma Rapid blown air heating system	NEW	✓	✓
Truma Ultrastore water heater	NEW	✓	✓
Whale high-flow on-board pump system with carbon filter	NEW	NEW	NEW
Whale waterline system	X	NEW	NEW
40L On-board fresh water tank (Easy change over)	X	X	✓
Blown air heating outlet in bedroom (Fixed bed layouts only)	NEW	✓	✓

ELECTRICAL	Corona Club	Omega	Rallye
Zoe eyeball 12v reading lights	X	✓	✓
BCA mains 230v wall lights	X	NEW	NEW
12v Lumo Crown Ice ceiling lights	X	✓	✓
Lumo 12v kitchen light	NEW	✓	✓
Sargent Stem reading light	NEW	X	X
Lumo 12v Dinette corner lights	NEW	X	X
Lumo 12v roof light	NEW	X	X
Sargent downlights	NEW	X	X
Wardrobe light	X	NEW	✓
Omnivent 12v 2-way fan	NEW	✓	✓
Heki rooflight (x2 on fixed bed models)	NEW	✓	✓
Exterior access door with 230v output socket (model specific)	X	✓	✓
240v 20A charging system with PDU system	NEW	X	X
Rear bedroom TV shelf c/w 12v, 230v & aerial sockets in 540 layout	X	✓	✓
ENTERTAINMENT	Corona Club	Omega	Rallye
Status multi directional TV aerial	NEW	NEW	✓
Sony CD Radio Tuner with I-Pod/MP3 player connectivity with AM antenna	NEW	NEW	✓
130mm diameter Sony stereo speakers	NEW	NEW	NEW
SECURITY	Corona Club	Omega	Rallye
CRIS Identity number etched to caravan chassis & all windows	NEW	✓	✓
Concealed security data chip	NEW	✓	✓
Microtag security marking kit	NEW	✓	✓
Anti-wind locking bolts to rear corner steadies	NEW	✓	✓
Autowatch security alarm system with new roof sensor	X	NEW	NEW
Single key operation to all exterior lockers and doors	NEW	✓	✓
All models comply with British & European safety standards	NEW	✓	✓
ACCESSORIES SUPPLIED FREE OF CHARGE WITH RANGE	Corona Club	Omega	Rallye
Owners Information Pack (Contains Owners Handbook and appliance manufacturers user manuals, boiler fuses, regulatory certificates and forms)	NEW	✓	✓
Large plastic step	NEW	✓	✓
Wheel brace and corner steady handle	NEW	✓	✓
Wheel locating pins (Easy assist to wheel change)	NEW	✓	✓
25m 230v hook up lead	NEW	✓	✓
Whale plug hose & filter assembly	NEW	NEW	NEW
Thetford Aqua Kem pack	NEW	✓	✓
Status aerial customer pack	NEW	✓	✓
Battery tray	NEW	✓	✓
2 x Corner steady locking pins	NEW	✓	✓
Male coaxial plug and 12v plug	NEW	✓	✓
Sink plugs, washing up bowl,	NEW	✓	✓
Grill pan	NEW	✓	✓
Big feet corner steady pads	X	NEW	✓
Wastemaster	X	X	✓
Shower Mat	NEW	✓	✓

X = not available, ✓ = available, NEW = new design or to this model



Compass Security Systems

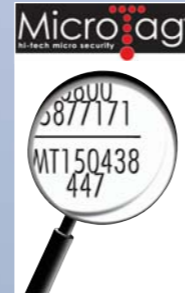
Theft Deterrent, Prevention and Security of your touring caravan, this is taken very seriously with Compass. That is why we have provided a combination of features designed to deter and prevent thieves from stealing your property. In the unlikely event that they should succeed, aid the identification and speedy recovery of your investment and assist in the prosecution of the thief with Microtag.



Microtag©

Supplied as standard with every Compass touring caravan, MicroTag© is an innovative and technologically advanced property tracing system that can be easily applied to all your valuables.

Marking your property with Microdots not only deters theft, but will also help lead to the successful prosecution of the thief and the recovery of your stolen valuables.



Why Use Microdots? - In order for the Police to successfully prosecute, it is necessary to identify the true owner of stolen property. Marking your property with Microdots is the easiest way to ensure your valuables are quickly identified.

You can Microdot all kinds of property against theft including your touring caravan, motor vehicles, televisions, bicycles, jewellery, in fact anything of value to you, that will also be of value to a thief.

In the event of theft or loss the police can locate the MicroDot by using an ultra violet light. The MicroDots are then read using a MicroDot reader, or a conventional microscope. Each MicroDot is laser etched with a free phone helpline and your own unique number which is registered on the International Security Register, manned 24 hours a day, 365 days a year.

Explorer Protect - Autowatch Alarm System

The Explorer Protect system is fitted as standard on the Omega and Rallye ranges and is manufactured by Autowatch.



The Explorer Protect system is designed to give years of trouble free operation. Made with only the highest quality components and using state of the art technology you can be assured that your caravan has the best electronic protection available.

Each caravan alarm is installed with a Passive Infrared Detector (PIR), a wireless sensor that detects movement in the caravan and transmits a radio signal to the alarm module. If the alarm is on the siren will sound. A leg sensor, fully sealed against dust and water, detects if the corner stabilising leg is being raised or lowered and transmits a coded radio signal to the alarm.

Additional sensors can be purchased from your retailer to enhance security.

Product Development

BPW Swing V -Tec Chassis

The Compass range of touring caravans features the advanced Swing V -Tec axle -chassis system from BPW, quite simply because we believe it to be the best available.

Our rigorous testing at UK and European proving grounds and vehicle test track facilities has proven its superb reliability & stability over other chassis makes available.

BPW are the European market leader with over 10 million axles sold world wide and an enviable reputation for producing high quality equipment. BPW axle and suspension systems are designed for high performance, reliability & low maintenance.

The main advantages of the Swing V-Tec chassis are:

- Improved ride stability due to a dynamic self-steering effect (unnoticeable in normal towing conditions), reducing the risk of swaying, sideways movement and side wind sensitivity.
- Greater stability even with sudden steering manoeuvres giving a wider margin of safety in an emergency situation.
- Excellent cornering ability due to increased tyre contact with the road, minimising body roll.
- Safer at high speed.

Winterhoff Stabiliser

The Winterhoff WS3000 is a convenient single lever system for easy coupling and stabilising. The special friction pads in the coupling are pressed against the tow ball of the towing vehicle under high spring pressure, thus suppressing dangerous snaking and pitching motions of the touring caravan before they build up.

The main advantages of the WS3000 Stabiliser are:

- Dampens snaking and pitching of the touring caravan.
- Allows more space between rear door mounted spare wheels, common on 4x4 tow vehicles and the open stabiliser.
- Easy to read wear indicator.
- Clip system for easy replacement of the friction pads.
- Ease of engagement and disengagement.

When combined with the Swing V-Tec chassis, the WS3000 offers the ultimate towing experience, but don't just take our word for it. RWTÜV Essen, an independent organisation, carried out detailed comparative tests of all towing ball couplings and stabilising gear on the market. (The stabiliser tests were carried out during July and August 2004).

These tests included criteria such as safety during towing, construction type related limited values, handling and maintenance of each system with a variety of weights. The comparative investigations were carried out at the Institute for Vehicle Technology in Essen, Germany and on the test area at Trier-Föhren Airfield. The test winner was the Winterhoff WS3000.





Compass Owners Club

As a Compass owner, you are eligible to join the Compass Owners Club. With a huge number of rallies and wide range of activities to take part in, membership adds a whole new dimension to the fun you can have and the friends you can make whilst enjoying your touring caravan.

For more information about the Compass Owners Club, visit www.compass-owners-club.co.uk

or contact:

Ann Robertson, 58 Aspley Park Drive, Aspley, Nottingham. NG8 3EG
Tel. 0115 9136985 E. Mail ann.robertson58@ntlworld.com

Compass on the Web

Details of your nearest retailer, latest news and useful downloads, as well as videos of all Compass vehicles can be found on our fully detailed website at:

www.compass-caravans.com

Compass . . . You Know Where You're Going

This brochure does not constitute an offer by The Explorer Group Limited (Explorer). Explorer reserves the right to, and does alter from time to time, technical specifications, prices and model ranges as materials, model improvements and conditions require, and can accept no responsibility for discrepancies between these and subsequent models shown. This brochure and the photographs used are for guidance purposes only. Please be sure to check full current and technical specifications with your retailer before ordering your new touring caravan. All household items illustrated in the brochure are used to enhance photography and are for display purposes only. They are not supplied with your touring caravan. Please note that Approved Retailers are not the agents of The Explorer Group Limited. Accordingly they have no authority to bind Explorer or to make any representation or undertaking whatsoever on behalf of Explorer.

Thanks to Nissan, Landrover and Volvo for kindly supplying the support vehicles for the photography.

The Explorer Group Limited

Manufacturers of Touring Caravans & Motorhomes

Explorer House, Delves Lane, Consett, Co.Durham DH8 7PE

Tel: 01207 699 000 Fax: 01207 699 001

www.explorer-group.co.uk