



**RAPIDO**  
2013

**V53**  
**V56**

VAN V53 presented with optional Style front in white colour



## Standard equipment

- ABS
- Driver's airbag
- Cab air-conditioning
- Electric cab windows
- Electric de-frosting side mirrors
- Central locking
- 4 registered seats
- Adjustable driver and passenger swivel seats
- Comfort seat covers
- Power steering
- Spare wheel
- Tap-style external showerhead (cold water)
- Pre-cabling for solar panel and TV

Technical specifications
• Internal height : 1,88 m
• Bed sizes (L x W / width at feet - mm) : (V56) 1900 x 1190 / 980 + 1850 x 1000 / 700 (V53) 1920 x 1320 / 1320 + 1850 x 1000 / 700
• Tank capacity: 95 l fresh water / 90 l wastewater under the chassis
• Gas type and capacity (reserves not included): Propane 2 x 13 kg
• Power connection 220 V, charger 220 / 12 V 20 A
• Capacity of living area battery : 1 x 100 Ah
• Control panel and protection, battery and water gauges
• 2 ceiling lights / LED spotlights
• 1 socket 220 V 10 A / 1 socket 12 V 7,5 A

Some models presented in this catalogue may be shown with optional equipment. Non-contractual photos: stylistic elements, décor and accessories not included. Since part of RAPIDO production is intended for export, the characteristics of the models may vary from one country to another; for an exact definition of the models marketed, we request you to consult your dealer. RAPIDO reserves the right to make modifications to its models without notice. Despite the care taken in the production of this catalogue, it cannot be taken as a contractual document. Your dealer will be happy to give you any further information you may require.

Technical specification BASE VEHICLE	FIAT		
ENGINES	2.0 JTD 115	2,3 JTD 130 (Option)	2,3 JTD 150 (Option)
Fuel / Tank (liters)	DIESEL / 90	DIESEL / 90	DIESEL / 90
Cubic capacity (cm <sup>3</sup> ) – Number of cylinders / of valves	1956 - 4 / 16	2287 - 4 / 16	2287 - 4 / 16
Type of injection	Direct / common rail	Direct / common rail	Direct / common rail
Maximum power (kW/HP at RPM)	85 / 115 at 3700	96 / 130 at 3600	109 / 148 at 3600
Maximum torque (Nm at RPM)	280 at 1500	320 at 1800	350 at 1500
Gearbox	Manual 6	Manual 6	Manual 6 / (or optional MTA6 robotised automatic gear box)

- Gross vehicle weight (kg) : 3300 / (3300 also with option 130 HP, 3500 also with option 148 HP)
- Circle between sidewalks(m) : 14,14
- Overall dimensions (L x W x H - m) : 5,99 x 2,05 x 2,55
- Unladen weight (kg – excluding options) : (V56) ND\* (V53) ND\*

LIVING AREA OPTIONS	Weight (kg)
Winter exterior insulation (cab windows and windshield)	5
Compartment and cabling for 3rd battery (battery not supplied)	2
Dashboard with walnut burr effect	-
GPS Navigation	5

- Front «Style» : 2 choices available :
- Front «Style» including foglights, external colour : white
  - Front «Style» including foglights + external paint : Grey Quartz metallic

CARRIER OPTIONS	Weight (kg)
Parking sensors	-
E S P with «Traction+»	-
Automatic gearbox MTA Fiat 148 HP	17
Engine 2.3 l 130 HP (3,3 t) and 2.3 l 148 HP (3,5 t)	50

RAPIDO VAN PACK
Passenger airbag
Cruise control
Comfortable front cab seat with two armrests
Front bumper paint
Gas changeover system
PIONEER® radio + 2 speakers

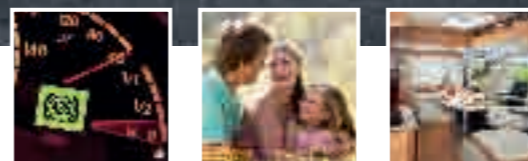
RAPIDO - B.P. 19 - 53101 MAYENNE CEDEX FRANCE - Tel.: +33 2 43 30 10 70 - Fax: +33 2 43 30 10 71  
WWW.RAPIDO.FR

\*ND : non determined



**RAPIDO**  
2013

VAN V56 presented with optional front STYLE and metallic paint.



**V53**

**V56**

# RAPIDO Van

## RAPIDO style & smile

Created for enthusiasts of spontaneous travelling, the RAPIDO VAN combines elegance and manoeuvrability. With its automotive-style, its fluid lines and powerful engine, it blends perfectly with the urban traffic and goes everywhere. Performance, safety and equipment: the RAPIDO VAN spares no detail. Among the automotive technology on the VAN, you will find: driver's airbag, cruise control, ABS, cab air conditioning ... Come and enjoy the smile of its front and the pleasure of driving through cities and countryside.



V56 Living room - Pino Varese ambiance - MODENA fabric



V53 Living room - Cilegio Ambiance and BOSTON LEATHER/Tep\* (option)



V53 Kitchen



V56 Sleeping spaces



V56 Bathroom



V53 - Bed folds up for storing and extracting a bicycle

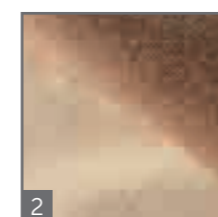
# RAPIDO Van

## ► Standard equipment

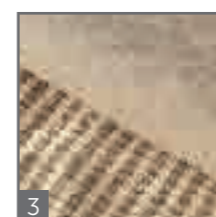
- Kitchen with stainless steel sink and 2 burner cooking hob, refrigerator 80 l (V53) or 100 l (V56)
- Bathroom with shower (with curtain) and camping toilet with removable tank
- 4 sleeping spaces (2 beds with slatted frames)
- Skylights (with blind and mosquito net) + model 700x500 at the front
- Halogen spotlights swivelling / Ceiling lights / LED Spotlights
- Combined Air / Water Heating Combi 4 (2000-4000 W / 10 l)
- Cab blinds (windshield and cab side windows)
- Harmony Cilegio Furniture or Pino Varese
- New extending table



1



2



3



4

- 1 Modena fabric (bicolour) as standard
- 2 Saint-Malo fabric (option)
- 3 Nice fabric (option)
- 4 LEATHER/Tep\* Boston Ambience (option) (Tep\*: polyamide-coated fabric)

## The comfort of a true motorhome

With 50 years experience in the development of motorhomes, RAPIDO puts all its expertise in this new VAN.

Its polyester shell matches the smallest internal shapes (specific insulation) and allows to enlarge space.

The result is both comfortable and functional: a perfectly calculated circulation space and an optimal arrangement of four living areas.

You'll enjoy:

- a large living room for five guests,
- a real kitchen, 4 beds (including 2 for children)
- a real bathroom.

Harmony Furniture brings a breath of freshness to your home. Add your personal touch by choosing one of three optional fabrics. Once you set foot on the electric instep, you immediately feel at home.

## V53 The classic Van with garage



4 registered seats • 4 beds (including 2 children) • large garage to hold 2 bikes • large living room 4 guests

## V56 The compact motorhome



4 registered seats • 4 beds (including 2 children) • large living room 4 guests • modular table outside • large interior space