



2014 MOTORHOME RANGE  
*accordo autoquest aspire*



**Elddis**



**SOLD**  
 STRONG LIGHT DRY

The revolutionary construction system  
 for a new generation of caravan





## The revolutionary construction system for a new generation of motorhome

### The first and only fully-bonded construction

Working with Henkel, the world renowned structural bonding specialists, we have created the first fully bonded motorhome. This world-class construction system is used on Formula 1 racing cars, super yachts and is even used to bond the wings of aeroplanes. And now Eddis motorhomes are built using the same pioneering and proven technology - SoLiD.

#### SoLiD is strong

Our motorhomes have more integrity and rigidity by spreading stresses and strains evenly across all joints.

#### SoLiD is light

The new construction system enables us to make not only stronger, but lighter motorhomes - allowing us to add even more class-leading specification whilst maintaining our lightweight advantage.

#### SoLiD is dry

With over 90% fewer exterior screws, this new construction creates an impervious barrier to water ingress, backed by our industry-leading 10 Year Water Ingress Warranty.

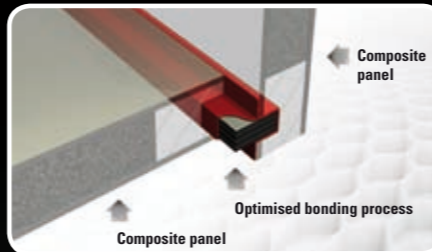
All Eddis motorhomes are built using our exclusive, industry-leading SoLiD structural bonding system.

**DEVELOPED  
TRIED & TESTED  
FOR OVER 5 YEARS**

In partnership with

**Henkel**

the world renowned structural bonding specialists



To prove the strength of SoLiD construction, we towed a twin axle caravan loaded to a hefty 1900kgs MTPLM...using a box made using SoLiD Construction.



Eddis motorhomes are built on the Peugeot 'Tempo Libero' chassis and are renowned for their smooth and agile road handling

All models



Rear-view and reversing camera

aspire



Sky-view® rooflight

aspire  
accordo



CD radio with steering mounted control

All models



Spare wheel and carrier

All models

## All Eddis motorhomes feature:

- Peugeot Boxer 2.2 HDi Turbo Diesel 130bhp Euro 5 engine\*
- Unmodified 'Tempo Libero' chassis for unbeatable driving performance and smooth road handling
- 6-speed gear box
- Improved fuel efficiency
- Spare wheel and tyre
- Fully adjustable seats, headrests and seatbelts
- Remote central locking
- Immobiliser
- On-board trip computer
- ABS brakes with emergency braking assistance
- Power steering with adjustable steering wheel position
- Radio/CD with steering mounted controls

...giving you an award-winning unrivalled driving experience

\*Autoquest 115 is 110bhp



Only Eddis motorhomes provide a passenger seatbelt for every designated berth. Think safety, think Eddis!



All Eddis motorhomes come with European Whole Vehicle Type Approval



connect with us   
[www.eddis.co.uk](http://www.eddis.co.uk)



autoquest • **accordo** • aspire



New 'Aspley Walnut' craftsman-built cabinetry with handcrafted dove-tailed drawers and positive locking

All models



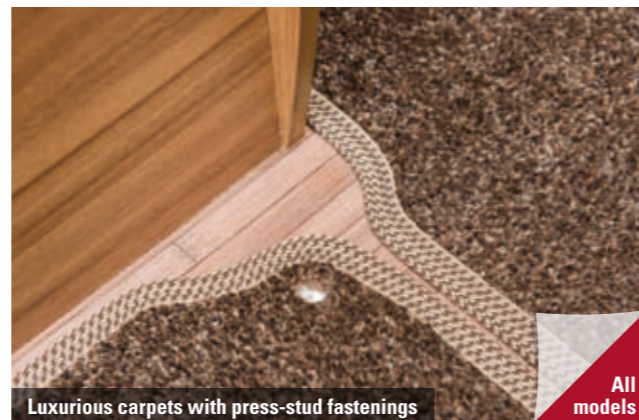
Worktop extensions

Selected models



Height-adjustable passenger headrests and seatbelts

All models



Luxurious carpets with press-stud fastenings

All models

Exclusive to *aspire*



New Alde touch-screen control

NEW



New 18" Avtex 7-way digital TV

NEW



New shoe rack at entrance

NEW

Introducing an all-new range  
**accordo**

↑  
UNDER 2.8m  
↓



← UNDER 6m →



TURN TO PAGE 12 TO VIEW THE RANGE



Working together with world-class suppliers to deliver world-class motorhomes



# Britain's best-selling motorhome



The multi-award-winning Elddis Autoquest is renowned for its quality, value and driving performance.

Outstanding drive performance is provided by a Peugeot Boxer 2.2 130bhp\* HDi Turbo Diesel for better fuel efficiency with six speed gear box and Euro 5 engine with reduced emissions.

The Autoquest Range, unlike most other motorhomes, is built on a standard Peugeot chassis, which we do not modify. Keeping the integrity of the Peugeot chassis gives the Autoquest unrivalled driving qualities.

This coachbuilt range is designed and engineered to the most exacting of standards, combining over 50 years of heritage with ultra-modern features and stylish comfort.

The Autoquest has everything you need in a motorhome – plus lots of home comforts – all at an affordable price.

It's easy to see why this is Britain's best-selling motorhome!



Model shown: Autoquest 175 in standard 'Atlantic' upholstery



Model shown: Autoquest 195



Model shown: Autoquest 155



Model shown: Autoquest 195

autoquest



Only Elddis motorhomes provide a passenger seatbelt for every designated berth. Think safety, think Elddis!



All Elddis Autoquest models come with European Whole Vehicle Type Approval



All Elddis caravans and motorhomes are engineered and built using our exclusive and industry leading SoLiD Construction



connect with us   
[www.elddis.co.uk](http://www.elddis.co.uk)

# Key features & benefits

- Class-leading outstanding drive performance is provided by a Peugeot Boxer 2.2 130bhp HDi Turbo Diesel for better fuel efficiency with six speed gear box and Euro 5 engine with reduced emissions (Autoquest 115 is 110bhp)
- Class-leading & unique GRP underskin to motorhome floor providing a water resistant barrier
- Class-leading spare wheel and tyre
- **NEW** Class-leading & unique 4KW Space-saving Whale® heating - runs on gas and/or electric with quiet night-time setting - ducted heating throughout including bathrooms (Autoquest 115 2KW gas or electric)
- Class-leading 90L fresh water tank with manual water fill system (excluding Autoquest 180 = 70L)
- Class-leading waste water tank 70L
- Class-leading & unique high capacity 13L Whale® water heater
- **NEW** Class-leading 'Aspley Walnut' craftsman-built cabinetry with handcrafted dove-tailed drawers, overhead lockers with positive locking and contrasting two-tone flush-fit kitchen units
- LED interior spotlights with concealed lights above overhead lockers (saving up to 80% battery consumption)
- Class-leading & unique full height spacious wardrobes with 170° hinges for easy access
- Unique & exclusive 'Easy Glide' bed technology for easy bed conversion
- Fixed beds now measure up to 6'4" with co-ordinating headboard for greater comfort and style
- Domestic size separate oven and grill with spark ignition, and dedicated pan storage cupboard
- 3 burner black enamel gas hob including high speed multi-function burner (for wok or large frying pan), spark ignition, flame failure protection and durable cover creating additional work surface
- Luxurious granite effect deep worktops
- 95L fridge (excluding 175 and 195), 195 has 85L, 175 has 155L large fridge freezer, all with removable freezer unit
- Unique space-saving bathroom with concealed sink and tap, folding shower screen with adjustable shower head (except 175, 180 and 195 models)
- **NEW** Avtex, high gain, omni-directional aerial with FM, AM, MW & LW, receives Digital and analogue signal
- Radio/CD with steering mounted controls
- **NEW** Peugeot wheel trims
- Class-leading fully protected mains electric system with up to six 240V sockets - more than any other motorhome manufacturer
- Swivelling passenger and driver seats (115, 145, 155, 165, 175, 195)



Autoquest 175 bathroom



Adjustable passenger headrests and seatbelts



Contrasting kitchen feature units



Convertible travel seats in Autoquest 155



Modern, spacious kitchens in 'Aspley Walnut'



Granite effect worktops and extensions

autoquest



Elddis

## What our Customers say:

"Drives like a dream and outclasses a lot of the more expensive models. A little gem"

"Pound for pound, the best value motorhome on the market!"

"Everything I asked for and more!"

"Our 5th new motorhome in nine years and the best yet"

"Brilliant is the only word for it"

"So comfy and very well laid out... the best move we ever made"



connect with us     
www.elddis.co.uk

# Specification, layouts and options

## Fabric Choices

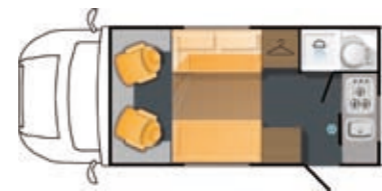


'Atlantic' upholstery standard in Autoquest



Optional 'Paradiso' Aquaclean® upholstery

**115**  
No. of berths / seats with designated seatbelts: 2 / 2



**140**  
No. of berths / seats with designated seatbelts: 2 / 2



**145**  
No. of berths / seats with designated seatbelts: 4 / 4



**155**  
No. of berths / seats with designated seatbelts: 4 / 4



**165**  
No. of berths / seats with designated seatbelts: 4 / 4



**175**  
No. of berths / seats with designated seatbelts: 2 / 2



**180**  
No. of berths / seats with designated seatbelts: 6 / 6



**195**  
No. of berths / seats with designated seatbelts: 4 / 4



Please refer to our website for additional options for this range [www.elddis.co.uk](http://www.elddis.co.uk)

## Comfort

- **NEW** Class-leading & unique 4KW Space-saving Whale® heating - runs on gas and/or electric with quiet night-time setting - ducted heating throughout including bathrooms (Autoquest 115 2kw gas or electric)
- Swivelling passenger and driver seats (115, 145, 155, 165, 175, 195)
- Class-leading & unique full height spacious wardrobes with 170° hinges for easy access
- Fixed beds now measure up to 6'4" with co-ordinating headboard for greater comfort and style
- High bed frame with easy-lift gas struts for improved-access storage to fixed beds
- Stylish shaped double-glazed opening windows with night ventilation position (excluding cab windows)
- Easy clean blinds and flyscreens (excluding cab windows)
- Removable entrance mat
- Privacy curtains or room dividers (155, 165, 180)

## Practical

- Class-leading & unique GRP underskin to motorhome floor providing a water resistant barrier
- Unique & exclusive 'Easy Glide' bed technology for easy bed conversion
- **NEW** Height adjustable passenger seat headrests
- Height adjustable seatbelts (please check if compatible with your baby seat/s)
- Class-leading fully protected mains electric system with up to six 240V sockets - more than any other motorhome manufacturer
- Fixing points for rear mounted 2 or 4 cycle 'Fiamma' CB Pro Hymer
- **NEW** Conveniently placed 12V control panel, incorporating water pump, lighting circuits, fresh water tank level and waste warning light when full
- **NEW** Exterior door and flyscreen with burstproof locking and rain deflector
- Compartment for 2 x 7kg gas bottles, with fitted gas regulator
- 20 Amp switchmode charger / transformer
- 25m mains hook-up cable
- Exterior access battery box with mains electric inlet
- Seat bases with space underneath for ample storage of larger, bulky items
- Smoke alarm
- Carbon Monoxide (CO) alarm
- Isolation taps for gas appliances

## Cook

- Domestic size separate oven and grill with spark ignition, and dedicated pan storage cupboard
- 3 burner black enamel gas hob including high speed multi-function burner (for wok or large frying pan), spark ignition, flame failure protection and durable cover creating additional work surface
- 95L fridge (excl 175 and 195), 195 has 85L, 175 has 155L large fridge freezer, all with removable freezer unit
- Black gloss enamelled sink with glass lid creating additional work surface and removable drainer
- Kitchen rooflight with flyscreen and blind (selected vans)
- Metal domestic style kitchen tap
- Well lit kitchen work area
- Worktop extensions (exc 140, 145, 180)

## Entertain

- TV points with dedicated locations for comfortable viewing (230V, 12V and aerial connection)
- **NEW** Avtex, high gain, omni-directional aerial with FM, AM, MW & LW, receives Digital and analogue signal
- Dining table

## Wash

- Class-leading 90L fresh water tank with manual water fill system (excluding 180 = 70L)
- Class-leading 70L waste water tank
- Class-leading & unique high capacity 13L Whale® water heater
- Unique space-saving bathroom with concealed sink and tap, folding shower screen with adjustable shower head (except 175, 180 and 195 models)
- Bathroom with fixed sink and vanity, folding shower screen with adjustable shower head (Autoquest 180 and 195)
- Large end bathroom with separate fully lined curved shower cubicle, large 'Nouveau' sink, and spacious wardrobe (Autoquest 175)
- Thetford toilet with auto fill flush from on-board water tank for convenience
- Domestic style bathroom door with high quality privacy lock
- Polished chrome fittings, mixer taps and separate shower taps

## Drive

- Spare wheel and tyre
- Fully adjustable co-ordinated cab seats with armrest
- Radio/CD with steering mounted controls
- Remote central locking (cab only)
- Immobiliser with unique code
- Driver's airbag
- Onboard trip computer
- High level brake light
- Side marker lights
- Electrically operated tinted cab windows and mirrors
- ABS brakes with emergency braking assistance
- Power steering with adjustable steering wheel position
- Removable cab carpet
- Lockable central storage box (cab)
- 12V DIN socket - for 12V power supply from the cab
- Door pockets, bottle holders and map holder
- Headlamp height adjustment

## Style

- **NEW** 'Aspley Walnut' craftsman-built cabinetry with handcrafted dove-tailed drawers, overhead lockers with positive locking and contrasting two-tone flush-fit kitchen units
- **NEW** interior design and luxurious 'Atlantic' sprung upholstery, with co-ordinating scatter and bolster cushions as standard
- Luxurious granite effect deep worktops
- High quality 24mm thick furniture gables (specific areas)
- Stylish full GRP Pod in all low-line models
- Awning light
- LED interior spotlights with concealed lights above overhead lockers (saving up to 80% battery consumption)
- ABS lower moulded rear panel with integral lights
- **NEW** Peugeot wheel trims
- **NEW** Removable 'Deepdale Walnut' luxurious loose lay carpets with press stud fixings
- 'Chocolate' bamboo-effect easy clean heavy-duty vinyl flooring

View videos online now

For more information and to meet the team behind the Elddis Autoquest range please visit: [www.elddis.co.uk](http://www.elddis.co.uk)



FIND YOUR NEAREST DEALER AT [www.elddis.co.uk](http://www.elddis.co.uk)



connect with us [f](#) [t](#) [y](#)  
[www.elddis.co.uk](http://www.elddis.co.uk)



# Compact yet cavernous

... the all-new motorhome that really measures up!



The all-new Elddis Accordo is a compact, sporty coachbuilt motorhome range. It has all the benefits of a coachbuilt motorhome, but unlike van conversion competitors, the Accordo comes with bags of living space.

The Accordo is under 2.8m in height and less than 6m in length - with 6'4" internal headroom, making it the perfect choice for your family vehicle.

Outstanding drive performance provided by a Peugeot Boxer 2.2 130bhp HDi Turbo Diesel for better fuel efficiency with six speed gear box and Euro 5 engine with reduced emissions

The Accordo Range, unlike most other motorhomes, is built on a standard Peugeot chassis, which we do not modify, keeping the integrity of the Peugeot chassis gives the Accordo unrivalled driving qualities.

This all-new range is designed and engineered to the most exacting of standards, combining over 50 years of heritage with ultra-modern features and stylish comfort. The Accordo has everything you need and more in a compact, coachbuilt motorhome - without the restrictions of a van conversion - and all at an affordable price.



Model shown: Accordo 105 in standard 'Atlantic' upholstery

EXCLUSIVE TO Elddis



Model shown: Accordo 125



Model shown: Accordo 105



Model shown: Accordo 125

accordo



Only Elddis motorhomes provide a passenger seatbelt for every designated berth. Think safety, think Elddis!



All Elddis Accordo models come with European Whole Vehicle Type Approval



All Elddis caravans and motorhomes are engineered and built using our exclusive and industry leading SoLiD Construction



connect with us [www.elddis.co.uk](http://www.elddis.co.uk)

# Key features & benefits

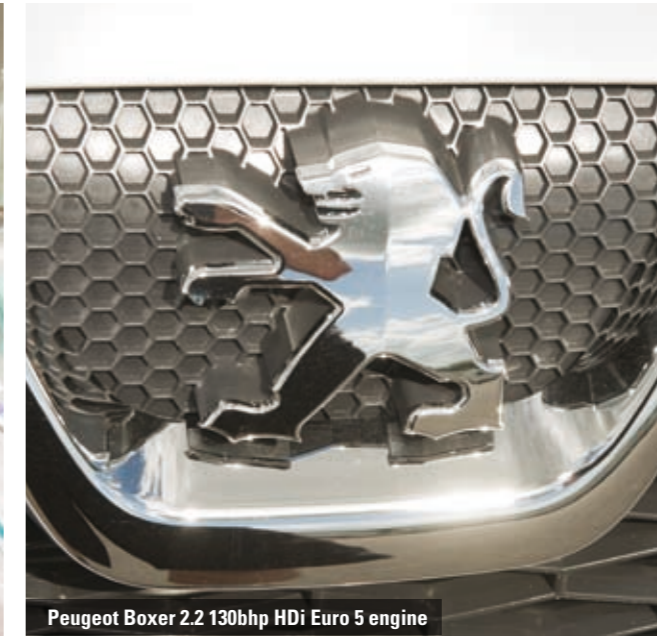
- Class-leading, outstanding drive performance provided by a Peugeot Boxer 2.2 130bhp HDi Turbo Diesel for better fuel efficiency with six speed gear box and Euro 5 engine with reduced emissions
- Class-leading & unique GRP underskin to motorhome floor providing a water resistant barrier
- Class-leading spare wheel and tyre
- Class-leading 90L fresh water tank with manual water fill system
- Class-leading waste water tank 70 litre
- **NEW** Class-leading 'Aspley Walnut' craftsman-built cabinetry with handcrafted dove-tailed drawers, overhead lockers with positive locking and contrasting two-tone flush-fit kitchen units
- LED interior spotlights with concealed lights above overhead lockers (saving up to 80% battery consumption)
- Class-leading & unique generous wardrobes with easy access
- Beds measure up to 6'6" for greater comfort
- Combination oven and grill
- 3 burner black enamel gas hob including high speed multi-function burner (for wok or large frying pan), spark ignition, flame failure protection and durable cover creating additional work surface
- Luxurious granite effect deep worktops
- 95L fridge with removable freezer unit
- **NEW** Avtex, high gain, omni-directional aerial with FM, AM, MW & LW, receives Digital and analogue signal
- Radio/CD with steering mounted controls
- **NEW** Peugeot wheel trims
- Swivelling passenger and driver seats



Accordo 125 rear garage leads to under bed storage



Bathroom with shower, sink, toilet and storage



Peugeot Boxer 2.2 130bhp HDi Euro 5 engine



Sky-view® cab rooflight



Height adjustable passenger headrests and seatbelts



Spare wheel and carrier as standard





# Specification, layouts and options

- Under 2.8m height
- Less than 6m length
- Less than 2.2m (7ft) width
- 6'4" internal headroom

## Fabric Choices



'Atlantic' upholstery standard in Accordo

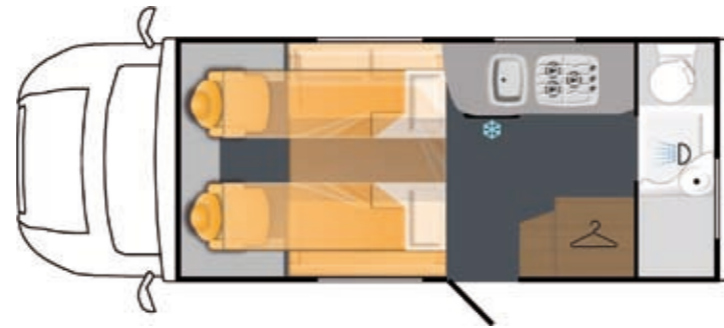


Optional 'Paradiso' Aquaclean® upholstery

**NEW**

**105**

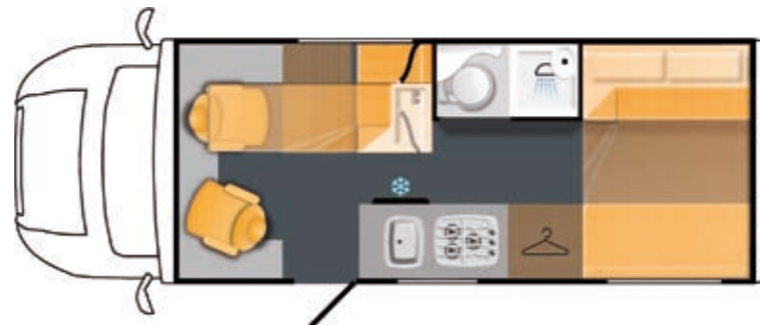
No. of berths / seats with designated seatbelts: 2 / 2



**NEW**

**125**

No. of berths / seats with designated seatbelts: 3 / 3



Please refer to our website for additional options for this range [www.elddis.co.uk](http://www.elddis.co.uk)

## Comfort

- Space-saving Whale® heating - runs on gas or electric with quiet night-time setting - internally ducted heating throughout including bathrooms
- Swivelling passenger and driver seats
- Class-leading & unique generous wardrobes with easy access
- Beds measure up to 6'6" for greater comfort
- Accordo 125 has luxury memory foam mattress with Coolmax® technology
- Stylish shaped double-glazed opening windows with night ventilation position (excluding cab windows)
- Easy clean blinds and flyscreens (excluding cab windows)

## Cook

- Combination oven and grill
- 3 burner black enamel gas hob including high speed multi-function burner (for wok or large frying pan), spark ignition, flame failure protection and durable cover creating additional work surface
- 95L fridge with removable freezer unit
- Black gloss enamelled sink with glass lid creating additional work surface and removable drainer
- Midi Heki rooflight with flyscreen and blind
- Metal domestic style kitchen tap
- Well lit kitchen work area
- Worktop extensions (125 only)

## Entertain

- TV points with dedicated locations for comfortable viewing (230V, 12V and aerial connection)
- Avtex, high gain, omni-directional aerial with FM, AM, MW & LW, receives Digital and analogue signal
- Dining table

## Drive

- Cruise control
- Class-leading spare wheel and tyre
- Fully adjustable co-ordinated cab seats with armrest
- Radio/CD with steering mounted controls
- Remote central locking (cab only)
- Immobiliser with unique code
- Driver and Passenger airbags
- Onboard trip computer
- High level brake light
- Side marker lights
- Electrically operated tinted cab windows and mirrors
- ABS brakes with emergency braking assistance
- Power steering with adjustable steering wheel position
- Removable cab carpet
- Lockable central storage box (cab)
- 12V DIN socket - for 12V power supply from the cab
- Door pockets, bottle holders and map holder
- Headlamp height adjustment
- Class-leading pleated windscreen and side cab window blinds
- Class-leading cab air conditioning with internal and external temperature display

## Wash

- Class-leading 90L fresh water tank with manual water fill system
- Class-leading waste water tank 70L
- Rapid heat up 8L Whale® water heater
- Bathroom with fixed sink and vanity, folding shower screen with adjustable shower head
- Thetford toilet with auto fill flush from on-board water tank for convenience
- Domestic style bathroom door with high quality privacy lock
- Polished chrome fittings, mixer taps and separate shower taps

## Style

- Class-leading 'Aspley Walnut' craftsman-built cabinetry with handcrafted dove-tailed drawers, overhead lockers with positive locking and contrasting two-tone flush-fit kitchen units
- interior design and luxurious 'Atlantic' sprung upholstery, with co-ordinating scatter and bolster cushions as standard
- Luxurious granite effect deep worktops
- Stylish full GRP Pod
- Awning light
- LED interior spotlights with concealed lights above overhead lockers (saving up to 80% battery consumption)
- ABS lower moulded rear panel with integral lights
- **NEW** Peugeot wheel trims
- Removable 'Deepdale Walnut' luxurious loose lay carpets with press stud fixings
- 'Chocolate' bamboo-effect easy clean heavy-duty vinyl flooring
- One piece GRP silver sides for ultimate resistance to minor damage

## Practical

- Spacious rear garage with ample storage for leisure equipment, mobility scooters etc (Accordo 125 only)
- Class-leading & unique GRP underskin to motorhome floor providing a water resistant barrier
- Class-leading Sky-view® opening cab sunroof with blind
- Height adjustable passenger seat headrests
- Height adjustable seatbelts (please check if compatible with your baby seat/s)
- Fixing points for rear mounted 2 or 4 cycle 'Fiamma' CB Pro Hymer
- Conveniently placed 12V control panel, incorporating water pump, lighting circuits, fresh water tank level and waste warning light when full
- Exterior door and flyscreen with burstproof locking and rain deflector
- Compartment for 2 x 7kg gas bottles, with fitted gas regulator
- 20 Amp switchmode charger / transformer
- 25m mains hook-up cable
- Exterior access battery box with mains electric inlet
- Smoke alarm
- Carbon Monoxide (CO) alarm
- Isolation taps for gas appliances



# Luxury isn't an option

... it comes as standard



The class-leading Eddis Aspire boasts a higher level of specification than any of its competitors...in fact, it's in a field of its own.

No other motorhome has such style, inside and out, at such an affordable price. Every detail of the Aspire has been designed to meet the most exacting demands.

Striking, sophisticated style, unrivalled driving performance, class-leading craftsman-built quality and hi-tech innovation – all at a competitive price with no hidden extras.

The Aspire Range, unlike most other motorhomes, is built on a standard Peugeot chassis, which we do not modify. Keeping the integrity of the Peugeot chassis gives the Aspire unrivalled driving qualities.

From the makers of Britain's best-selling motorhome, meet the new generation of luxury leisure vehicle!



Model shown: Aspire 255 in standard 'Paradiso' Aquaclean® upholstery



Model shown: Aspire 275



Model shown: Aspire 255



Model shown: Aspire 265 with optional leather upholstery

aspire



All Eddis Aspire models have been awarded Grade III Thermal Insulation for safe and comfortable touring in all weather conditions



Only Eddis motorhomes provide a passenger seatbelt for every designated berth. Think safety, think Eddis!



All Eddis Aspire models come with European Whole Vehicle Type Approval



All Eddis caravans and motorhomes are engineered and built using our exclusive and industry leading SoLiD Construction



connect with us   
[www.eddis.co.uk](http://www.eddis.co.uk)

# Key features & benefits

- Class-leading outstanding drive performance provided by a Peugeot Boxer 2.2 130bhp HDi Turbo Diesel for better fuel efficiency with six speed gear box and Euro 5 engine with reduced emissions
- **NEW** Class-leading Alde 24-hr programmable central and water heating system. Runs on gas, electric (up to 3KW) or both with new easy-to-use LCD touchscreen control.
- Class-leading cab air conditioning with internal and external temperature display
- Class-leading cruise control
- Class-leading high level rear view camera with night-time vision
- Class-leading Thatcham category one alarm
- Stylish alloy wheels
- One piece GRP silver sides for ultimate resistance to minor damage
- **NEW** Avtex 18" LCD flat screen HD TV with integrated DVD player, built-in Freeview, CD player, USB port (which can be used to record and playback programmes), 2 HDMI inputs and PC monitor
- Radio/CD with steering wheel mounted controls and MP3 and Bluetooth connectivity
- Class-leading driver and passenger airbags
- Swivelling passenger and driver seats, plus all cab seats have habitational reading lights
- Class-leading 90L fresh water tank with manual water fill system
- Waste water tank 70L
- Class-leading & unique GRP underskin to motorhome floor providing a water resistant barrier
- Class-leading spare wheel and tyre
- Class-leading Sky-view® opening cab sunroof with blind
- Class-leading pleated windscreen and side cab window blinds
- Exquisite interior design and luxurious 'Paradiso' Aquaclean® sprung upholstery, with co-ordinating scatter and bolster cushions as standard
- Class-leading sumptuous 'Montego Birnbaun' craftsman-built cabinetry in a 24mm class-leading locker construction, with dove-tailed drawers, removable shelves and positive locking
- Class-leading 100% LED interior lighting, saving up to 80% battery consumption
- Class-leading luxury memory foam mattress with Coolmax® technology (fixed beds)
- Ceramic toilet with electric flush from on-board water tank
- Class-leading 189L Smart Energy fridge-freezer (255, 265, 275) (Auto switchover between gas, 230V electric and 12v battery should power fail), 122L fridge freezer (205)
- Class-leading extractor fan above dual fuel hob (800W electric hotplate, three gas burners and durable glass cover/additional worktop) spark ignition
- 800W microwave, fully ventilated, with microwave isolation switch (selected models are fitted at a easy to access height)
- Class-leading multi-speed omnivent (extracts and cold air)
- External satellite point, 12V outlet with solar panel connectivity, aerial point and 230V external socket



aspire

360° virtual tours on our website



"Luxury certainly does come as standard. Absolutely stunning motorhome and Elddis service is first class"

"We fell in love with the Elddis Aspire!"

"We've had six brand new motorhomes - but the Aspire supercedes them all by miles"

"What a brilliant motorhome!"

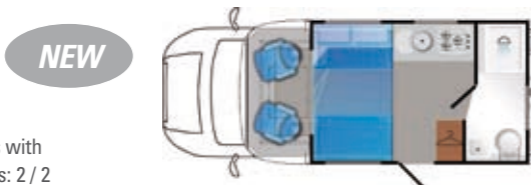


connect with us [www.elddis.co.uk](http://www.elddis.co.uk)

# Specification, layouts and options

**205**

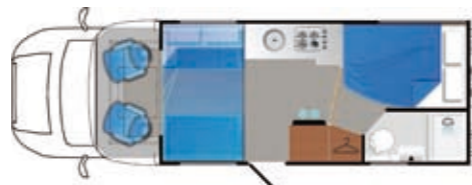
No. of berths / seats with designated seatbelts: 2 / 2



**NEW**

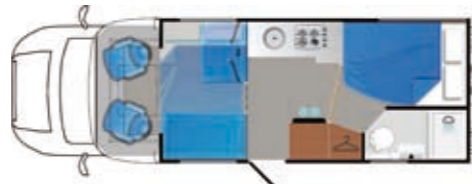
**255**

No. of berths / seats with designated seatbelts: 2 / 2



**265**

No. of berths / seats with designated seatbelts: 4 / 4



**275**

No. of berths / seats with designated seatbelts: 2 / 2

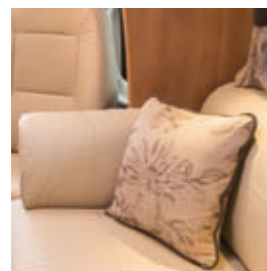
**NEW**



## Fabric Choices



'Paradiso' Aquaclean® upholstery standard in Aspire



Optional 'Cardinal Mirage' leather option available in fixed bed models (255 and 265)

Please refer to our website for additional options for this range [www.elddis.co.uk](http://www.elddis.co.uk)

## Practical

- Class-leading Thatcham category one alarm
- Class-leading & unique GRP underskin to motorhome floor providing a water resistant barrier
- Class-leading Sky-view® opening cab sunroof with blind
- Class-leading 100% LED interior lighting, saving up to 80% battery consumption
- External satellite point, 12V outlet with solar panel connectivity, aerial point and 230V external socket
- Seatbelts with height adjustable function meaning the seatbelt can be adjusted for adult or child (please check if compatible with your baby seat/s)
- Large Heki tilting panoramic rooflight with pleated blind and separate flyscreen
- Digital control panel with time, battery and on-board water status
- Electric entrance step with auto retract
- ICS controller with dimmer function to main lights
- Wardrobe light with sensor
- Carbon Monoxide (CO) alarm
- Smoke alarm
- Full height mirrors with feature surround & light
- Fixing points for rear mounted 2 or 4 cycle 'Fiamma' CB Pro Hymer
- Compartment for 2 x 7kg gas bottles, with fitted gas regulator
- 300W charger / 16Amp transformer with automatic intelligent battery control to prevent vehicle battery drain
- Class-leading fully protected mains electric system with up to five 230V sockets - more than any other motorhome manufacturer
- 25m mains hook-up cable
- 100 Amp leisure battery
- Class-leading & unique 170° hinges for walk-in effect wardrobes with up to three hanging rails
- Exterior access battery box with mains electric inlet
- Easy-lift pull out seat bases with gas struts for convenient bed make up and improved-access to storage
- Isolation taps for gas appliances

## Comfort

- **NEW** Class-leading Alde 24-hr programmable central and water heating system. Runs on gas, electric (up to 3KW) or both with new easy-to-use LCD touchscreen control.
- Swivelling passenger and driver seats, plus all cab seats have habitational reading lights
- Class-leading luxury memory foam mattress with Coolmax® technology (fixed beds)
- Class-leading Grade III Thermal Insulation for guaranteed all weather comfort
- LED concealed mood lighting, above and beneath lockers, under the work surface, and at floor level all with dimmer switches.
- Class-leading double-glazed privacy tint opening windows with night ventilation position and acrylic feature panels
- Fixed beds now measure up to 6'4" with co-ordinating headboard for greater comfort and style
- High bed frame with easy-lift gas struts for improved-access storage (fixed beds)
- 'Chocolate' bamboo-effect easy clean heavy-duty vinyl flooring
- Seat backrest ventilation boards for even heat distribution
- Removable entrance mat

## Entertain

- **NEW** Avtex 18" LCD flat screen HD TV with integrated DVD player, built-in Freeview, CD player, USB port (which can be used to record and playback programmes), 2 HDMI inputs and PC monitor
- **NEW** Avtex, high gain, omni-directional aerial with FM, AM, MW & LW, receives Digital and analogue signal
- USB charging point
- Illuminated cocktail cabinet with wine bottle and glass holders
- TV points with dedicated locations for comfortable viewing (230V, 12V, satellite and aerial connection)
- Class-leading dedicated area for Freeview/Satellite connection (box not included)
- Dining table

## Cook

- Class-leading 189L Smart Energy fridge-freezer (255, 265, 275) (Auto switchover between gas, 230V electric and 12v battery should power fail), 122L fridge freezer (205)
- Class-leading extractor fan above dual fuel hob (800W electric hotplate, three gas burners and durable glass cover / additional worktop) spark ignition
- 800W microwave, fully ventilated, with microwave isolation switch (selected models are fitted at a easy to access height)
- Class-leading multi-speed omnivent (extracts and cold air)
- Substantial pull-out kitchen storage baskets (selected models)
- Pull-out worktop extension (255, 265 and 275)
- Dedicated cutlery tray
- Domestic size separate oven and grill with spark ignition, and dedicated pan storage cupboard (2 shelves and oven light)
- Black enamel sink with chopping board & drainer with dedicated storage
- Polished chrome fittings and taps
- Modern cream kitchen splashback
- Well lit kitchen work area with energy-saving LED downlights

## Style

- Stylish alloy wheels
- One piece GRP silver sides for ultimate resistance to minor damage
- Class-leading highly polished domestic stylish curtain poles
- Class-leading pleated blinds & flyscreen to habitational windows
- Exquisite interior design and luxurious 'Paradiso' Aquaclean® sprung upholstery, with co-ordinating scatter and bolster cushions as standard
- Brushed stainless steel injection moulded cab vent covers
- Luxurious granite effect deep worktops with concealed lighting underneath
- Class-leading sumptuous 'Montego Birbaun' craftsman-built cabinetry in a 24mm class-leading locker construction, with dove-tailed drawers, removable shelves and positive locking
- Rear panel with integral lights
- Luxury deep pile 'Deepdale Bark' carpet with anti slip press studs
- Entrance door, with window blind, flyscreen and waste bin
- Awning light

## Wash

- Ceramic toilet with electric flush from on-board water tank for convenience
- Class-leading 90L fresh water tank with manual water fill system
- Waste water tank 70L
- Luxurious bathroom with granite effect sink and tile effect fully lined separate shower cubicle
- Domestic style bathroom door with high quality privacy lock
- Polished chrome fittings, mixer taps and separate shower taps
- Domestic style bathroom cabinet
- Multi-positional rooflight with flyscreen and blind
- Illuminated vanity mirror in bathroom

## Drive

- Class-leading outstanding drive performance provided by a Peugeot Boxer 2.2 130bhp HDi Turbo Diesel for better fuel efficiency with six speed gear box and Euro 5 engine with reduced emissions
- Class-leading cab air conditioning with internal and external temperature display
- Class-leading cruise control
- Class-leading high level rear view camera with night-time vision
- Class-leading driver and passenger airbags
- Class-leading spare wheel and tyre
- Class-leading pleated windscreen and side cab window blinds
- Remote central locking to cab and habitation door via key fob (can operate the habitational door independently)
- Upholstered cab seats with armrest, position, height and rake adjustment
- Radio/CD with steering wheel mounted controls and MP3 and Bluetooth connectivity
- Air-top adjustable air suspension (265 model only) for adjustable weight distribution
- Immobiliser with unique code
- High level brake light
- Side marker lights
- Electrically operated tinted cab windows and mirrors
- ABS brakes with emergency braking assistance
- Variable power steering with adjustable steering wheel position
- Removable cab carpet
- Lockable central storage box
- 12V DIN socket - for 12V power supply from the cab
- Door pockets, bottle holders and map holder
- Headlamp height adjustment

View videos online now  
For more information and to meet the team behind the Elddis Aspire range please visit: [www.elddis.co.uk](http://www.elddis.co.uk)



FIND YOUR NEAREST DEALER AT  
[www.elddis.co.uk](http://www.elddis.co.uk)



connect with us   
[www.elddis.co.uk](http://www.elddis.co.uk)





The 2014 Elddis motorhome range, options and accessories are now available exclusively at our national network of approved retailers. Visit [www.elddis.co.uk](http://www.elddis.co.uk) to find your nearest specialist supplier and to see 360° virtual tours, product reviews, news, offers and much more...



**Elddis**



**Compass**



**Xplore**



*Buccaneer*

Every Explorer Group motorhome proudly carries the National Caravan Council (NCC) approved badge of quality. Accordo, Autoquest and Aspire are trademarks of The Explorer Group Limited. Company Registration No. 02433663 England & Wales. This brochure does not constitute an offer by The Explorer Group. The Explorer Group reserves the right to, and does alter from time to time, technical specifications, prices and model ranges as materials, model improvements and conditions require, and can accept no responsibility for discrepancies between these and subsequent models shown. This brochure is for guidance purposes only. Please be sure to check our full current and technical specifications with your retailer before placing your order. Please note that Approved Retailers are not the agents of The Explorer Group. Accordingly they have no authority to bind The Explorer Group or to make any representation or undertaking whatsoever on behalf of The Explorer Group. Props shown in this brochure are for photographic purposes only and are not included in the specification. Bed covers and additional scatter cushions shown are for demonstration purposes only, similar co-ordinating sets are available to purchase from your Explorer Group retailer. The Explorer Group products are covered against water ingress damage for 10 years from the original date of purchase of a new product. This applies to water ingress through any permanently sealed seam joints. If you purchase this vehicle as a used vehicle it may be possible to transfer the unexpired term of the warranty cover (up to a maximum of six years commencing at the original date of purchase from new). Full Terms and Conditions, including service intervals and exclusions can be found on the Elddis website [www.elddis.co.uk](http://www.elddis.co.uk) or by telephoning The Explorer Group Customer Care Team.

Elddis | Delves Lane | Consett | County Durham | DH8 7PE

[www.elddis.co.uk](http://www.elddis.co.uk)

connect with us

