

HYMER Caravans

2018 *Individual
independent travel*



HYMER

HY-TEC INSIDE

The future is now – discover the unique HYMER technology!

raum⁺system
for more comfort and space

Perfect winter resistance thanks to clever air conditioning solutions and patented PUAL design



Optimal stability and excellent insulation values thanks to PUAL external wall

Modern body technology with curved roof/side wall interface and 51 mm GRP lightweight floor

raum⁺system

The innovative HYMER raum⁺system gives you even more comfort and space within the same dimensions. Completely clear stowage spaces, large overhead lockers and the cellar space below the beds and seating ensure a huge amount of extra storage as standard. The raum⁺system also accommodates two-metre-long beds, a U-shaped comfort seating area and a roomy bathroom.

Air circulation

All overhead lockers have a void at the back as standard, through which warm air can circulate freely. That way major temperature variations and unwanted condensation in the interior can be avoided.

LED lighting

Energy-saving LED lights are installed throughout the vehicle for low power consumption. The LED ambient lighting is optionally available as an overhead locker trim.

Entertainment on the move

The optional HYMER SMART-Multimedia package includes a 22" LED TV in the living area and a 19" LED TV in the sleeping area as well as a DSP box. This allows simultaneous use of the television in the living area and the radio in the sleeping area, for example.

Softclose

All kitchen drawers are roller-mounted for an ultra-smooth action. They feature high-quality servo soft-touch closing mechanisms and one-hand push-locks which prevent the drawers from opening and rattling while the vehicle is in motion.

Sleeping comfort

The HYMER comfort sleeping system with high-quality disc-spring bed frames available as an optional extra maximises the benefits of the multi-zone cold foam mattresses. Each area of the body is supported with the ideal counter-pressure for snug and restful sleep.

HYMER Nova GL

Strikingly beautiful, beautifully practical.

The HYMER Nova GL boasts unique comfort features and top functionality combined with excellent practicality. The Trentino Pear Wood furniture finish radiates a classically stylish atmosphere. The new multifunctional rear lights are an eye-catching feature, echoing the three bars of the HYMER logo when illuminated. The **raum+system** guarantees more space and freedom of movement within the same dimensions. Highlights of the Nova generation include its outstanding body shell design, minimum bed length of 2 metres, practical service installation systems and winter resistance. The HYMER Nova GL is the ideal caravan for winter camping, thanks to features such as the PUAL high-tech body and frost-protected plumbing and wiring.



- Nova 470 GL
- Nova 485 GL
- Nova 541 GL
- Nova 545 GL
- Nova 580 GL
- Nova 585 GL
- Nova 590 GL



PUAL body shell design:
optimal insulation,
absolute stability



More freedom of
movement with
1.98 m headroom



raum+system:
for added stowage space



Excellent insulation
thanks to 51 mm
sandwich floor



LED rear lights with
hybrid technology



Rounded or square
upholstery corners
(optional depending
on model)





Home from home.
The Nova 540 GL feels almost like your living room at home with its ultra-comfy seating area in the warm Trentino Pear Wood furniture finish.

Living area and kitchen

Caravanning with a touch of luxury.



A great combination.
The 3-burner hob/sink combination comes with a safety pilot, is easy to clean and includes sufficient work surface at the front for food preparation.



Sleeping and bathroom

A world of wellness to suit every taste.

Secure storage.
The bathroom in the HYMER Nova 540 GL boasts an array of open and closed shelving and cupboards for secure storage of all your items.



Just like home.
The removable, washable drill covers conceal high-quality cold-foam mattresses that guarantee home-from-home sleeping comfort. Whether single bed or lounging area, the ingenious bed conversion takes no time at all, and the Trentino Pear Wood furniture finish creates a pleasant ambience.

HYMER Nova S

Premium design redefined.

The premium model HYMER Nova S has a brand new look. The fully redesigned rear radiates sheer elegance. In the interior, high-class materials and modern design harmonise with a superbly coordinated lighting concept – and with all the style of a modern luxury suite! The proven raum+system is retained in the new HYMER Nova S, providing systematic space optimisation. Like all caravans of the Nova model range, the new flagship is fully winterproof, guaranteeing year-round camping enjoyment.



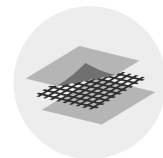
- Nova S 620
- Nova S 690



PUAL body shell design:
optimal insulation,
absolute stability



raum+system:
for added stowage
space and functionality



GRP lightweight floor
(wood-free) 51 mm



More freedom of
movement with 1.98 m
headroom



LED rear lights with
hybrid technology



50-l underfloor fresh
water tank
(heated and insulated)



Living area and kitchen

Pure innovation for discerning tastes.

Plenty of space to chill.

The redesigned interior in the elegant Velvet Ash furniture finish creates a cosy yet luxurious living room atmosphere. The seat box finisher cushions are upholstered in the same fabric as the living area, giving the seating area an even more spacious and unusual look.



Cosy seating area.

The generous U-shaped seating area in the HYMER Nova S 545 is ideal for relaxation and cosy get-togethers, with indirect light sources for a pleasant ambience.



High-quality pull-out drawers.

The large, sturdy pull-out drawers and cutlery compartment with Soft-Close mechanism provide plenty of space for all your crockery and cutlery. The drawers and pull-out compartments can be readily removed in one easy step.

Stylish wall cladding.

The redesigned kitchen of the HYMER Nova S with gloss finish surfaces and wall cladding in high-quality acrylic glass is extremely chic and stylish.



Sleeping and bathroom

High quality of life on the move.

Comfy bed. The large fixed bed in the rear of the HYMER Nova S 545 provides comfortable sleeping quarters for two. Above the bed is a standard double-glazed panoramic roof vent with LED lighting.



Stylish wetroom. The vanity unit with its modern, floral design provides a stylish surround for the Cool Glass washbasin.



Luxury shower fittings Optionally available for all HYMER Nova models: the luxury shower facility with fixed partitions, shower head and water-resistant bathroom surfaces. All bathrooms are equipped with a bench toilet.

HYMER Nova GL “60 Edition”

A feast for the eyes.

The anniversary model of the HYMER Nova GL is impressive with its unrivalled comfort and unbeatable practicality. Its rear with the new multifunctional rear light that uses LED hybrid technology gives it a distinctive appearance, its body shell design is first class, and it goes without saying that it's suitable for use in winter. The tried-and-tested raum+system ensures more space and freedom of movement in the living area.



60 EDITION

- Nova 470 GL “60 Edition”
- Nova 485 GL “60 Edition”
- Nova 545 GL “60 Edition”



PUAL body shell design:
optimal insulation,
absolute stability



More freedom of
movement with 1.98 m
headroom



raum+system:
for added stowage space
and functionality



Excellent insulation
thanks to 51 mm
sandwich floor



LED rear lights with
hybrid technology



Rounded or square
upholstery corners
(optional depending
on model)





Furniture style collection “60 Edition”.

Top design on wheels: light, modern, Chiavenna Walnut furniture finish combined with bi-colour flaps (top: high-gloss coffee, bottom: iguana silver) and handles in black chrome. The modern glass-look work surface and tabletop are very easy to care for thanks to the “Soft frosted glass” laminate with anti-fingerprint finish. Rounding off the whole is the U-shaped seating group with “round” corners and modern button design.

Living area and kitchen

The top-of-the-range anniversary model at a special price.



A shining example. High-gloss wall covering in the kitchen: splashback with acrylic glass cladding, kitchen cabinets also in high-gloss coffee colour.



For a good night's sleep.
Double pleated blinds on all windows combine the benefits of a double blind with those of a multi-functional one, comprising an all-in-one insect screen and blackout blind. For ventilation, privacy and insect protection.

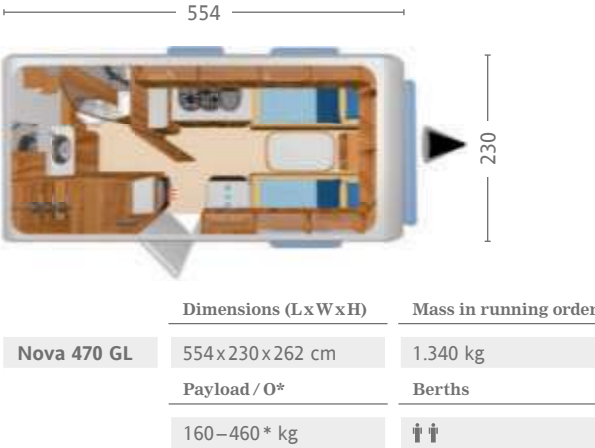
Sleeping and bathroom

A tradition of innovation.

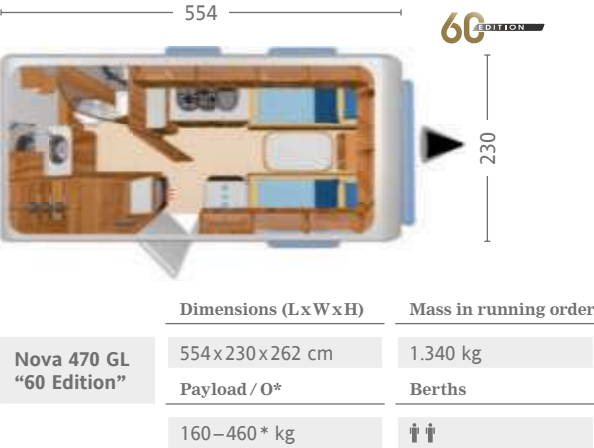
Separate wellness area.
The bedroom and bathroom areas can be darkened with a pleated blind and separated off from the living area of the caravan. The cabinet underneath the washbasin offers plenty of storage space.



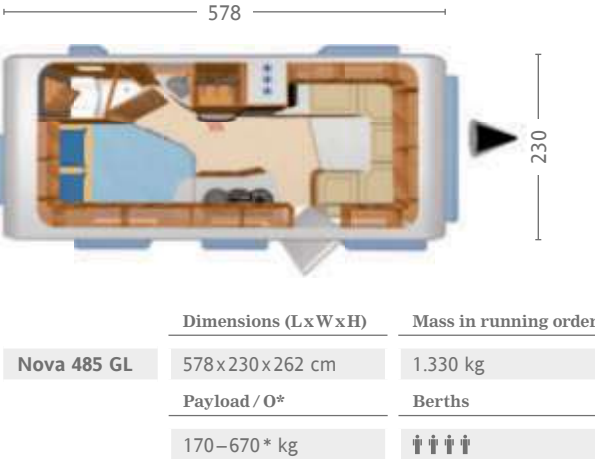
Nova 470 GL



Nova 470 GL “60 Edition”



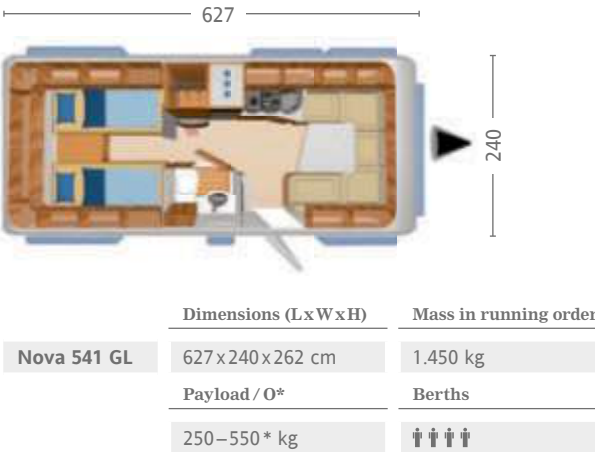
Nova 485 GL



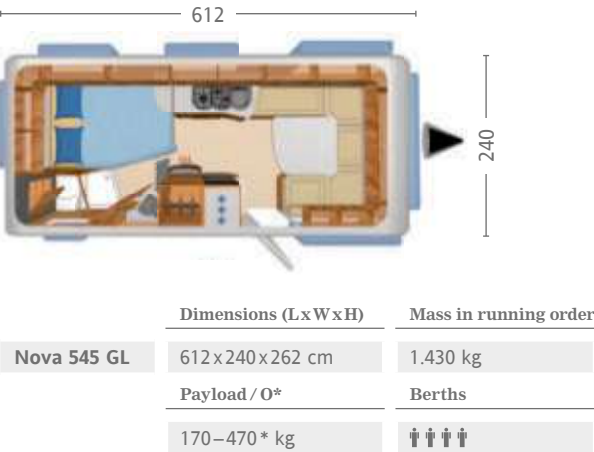
Nova 485 GL “60 Edition”



Nova 541 GL



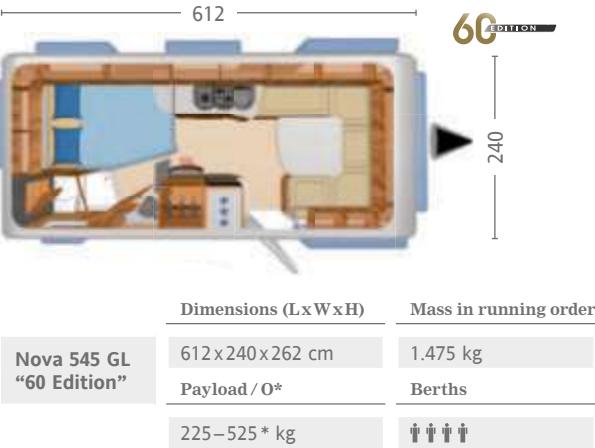
Nova 545 GL



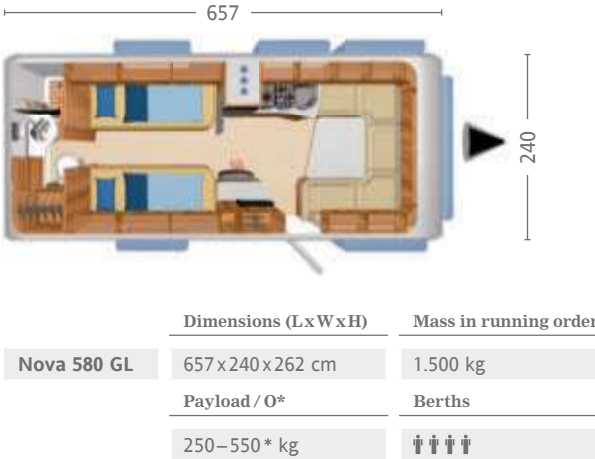
Nova S 545



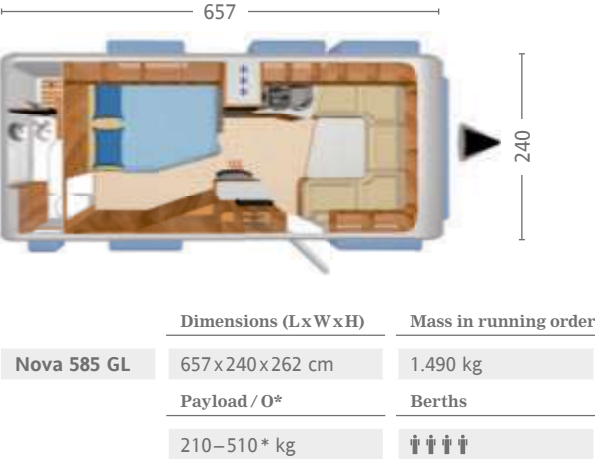
Nova 545 GL “60 Edition”



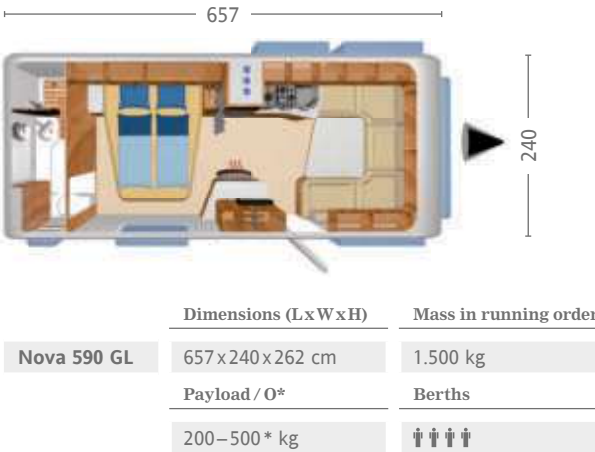
Nova 580 GL



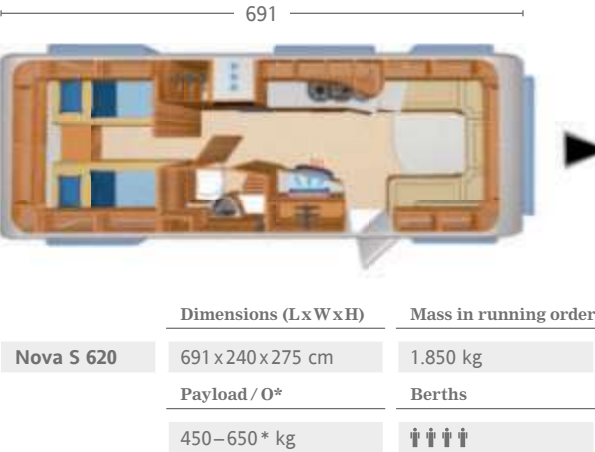
Nova 585 GL



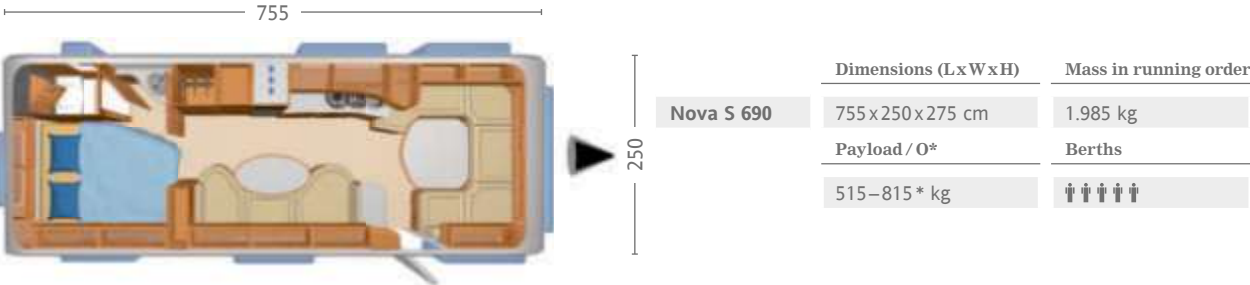
Nova 590 GL



Nova S 620



Nova S 690



*O = optional extras

The interior at a glance

Fabric and leather design, carpet and wood finishes.

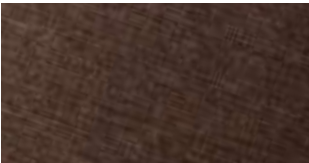
Soft furnishings



London



Cusco



Janeiro



Brighton



Pico

	Soft furnishings				
Nova GL	✓	–	–	○	○
Nova GL “60 Edition”	–	✓	✓	–	–
Nova S	–	–	–	–	–
	London	Cusco	Jeneiro	Brighton	Pico

Real leather

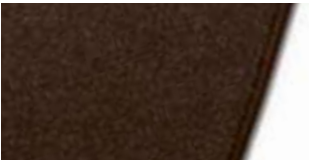


Tortora



Napoli

Carpets



Roma



Samara

Wood finishes



Trentino Pear Wood



Velvet Ash

	Real leather		Carpets		Wood finishes	
Nova GL	○	○	○	○	✓	–
Nova GL “60 Edition”	–	–	○	○	✓	–
Nova S	✓	✓	○	○	–	✓
	Tortora	Napoli	Roma	Samara	Trentino Pear Wood	Velvet Ash

Note

This brochure describes the series status at the time of publication. Despite careful checking of the contents, misprints cannot be ruled out. We reserve the right to modify the equipment or make product improvements during the course of the model year. Before signing a sales contract, please ask one of our authorised HYMER dealers about the current product and series status.

Some vehicles include optional extras which are quoted in the current price list and available at extra cost. The decoration shown is not supplied by HYMER. The details of scope of delivery, appearance, performance, dimensions and weights are valid at the time of going to press – deviations within the factory tolerance limits (max. +/- 5%) are possible and permissible.

These data comply with European homologation regulations, which may change up to the time of vehicle purchase or delivery. Your HYMER dealer will gladly provide you with information on any changes and the standard scope of delivery.

Copyright © 2017 Hymer GmbH & Co. KG



Hymer GmbH & Co. KG
Postfach 1140
D-88330 Bad Waldsee

www.hymer.com

Follow us on Facebook and Instagram:

