

Love  
Challenger



**SWIFT**  
CREATING SMILES FOR LIFE



Love life

LOVE SWIFT

CHALLENGER & CHALLENGER X

## UNDER OUR OWN BLUE SKY

Take me to a place that I call Here,  
Hold me in a time that I call This  
The air is clean, the light is clear  
And now an outdoor kind of bliss  
Draws me to a spot I really love;  
The door wide open, the kettle on,  
A family that fits me like a glove.

A moment's pause for those who've gone  
Who still remain in the mind and heart.

And now, under our very own blue sky  
The rest of our lives can slowly start  
And our spirits can begin to fly  
With memories of where we've been,  
Those mornings we have yet to know  
Those brand new vistas all unseen.  
Love life, I say. And now, let's go!

©Ian McMillan 2021

love life  
LOVE SWIFT

# Contents

PG05 LOVE CHALLENGER - WHICH ONE IS FOR YOU?

PG07 HIGHLIGHTS

PG12 EXTERIOR STYLE

PG14 SMART CONSTRUCTION

PG16 FEATURES

PG18 FABRIC OPTIONS

PG20 TECHNICAL SPECIFICATION

PG24 WHERE TO BUY YOUR CHALLENGER





Love  
Challenger



Made to Match  
Your Lifestyle

WHICH ONE IS FOR YOU?



CHALLENGER

CHALLENGER X

7'4" WIDE

8'0" WIDE

FROM  
£24,595

FROM  
£29,595

Choice, value and sophistication – Challenger is irresistible thanks to an on-trend interior and a host of superb features fitted as standard.

And with five different models available this season, including a choice of two or four-berth, single or twin-axle, it's easy to select your ideal Challenger.

Delivering all the Challenger features, looks and value you love, but with even more space, the 8ft-wide Challenger X is ideal for families, from the wider beds and greater storage to the fully equipped kitchen and washroom.

Select from four models, all of which are four-berth and with a choice of single or twin-axle, including the new X860 layout.



# Highlights

Step inside Challenger and Challenger X to find sumptuous interiors, combining style with function for getaways that are as relaxing as they are practical. Enjoy space, equipment and quality wherever the road takes you, from the fully fitted kitchen and washroom to the indulgently comfortable beds.

- 1** Coyote soft furnishing scheme with contemporary Aralie Sen woodgrain
- 2** Beech slat seat and bed bases with sprung hinged tops and ample storage
- 3** Useful front chest featuring a soft-close drawer, concealed drawer and slide-out extending top
- 4** Swift AirWave cushioning for greater seating and sleeping comfort
- 5** Panoramic front sunroof with integrated curved blind system, recessed lighting and speakers
- 6** Positive overhead locker catches for secure storage on the move





**1** Stylish chrome effect sockets

**2** Ventilated microwave oven with digital controls

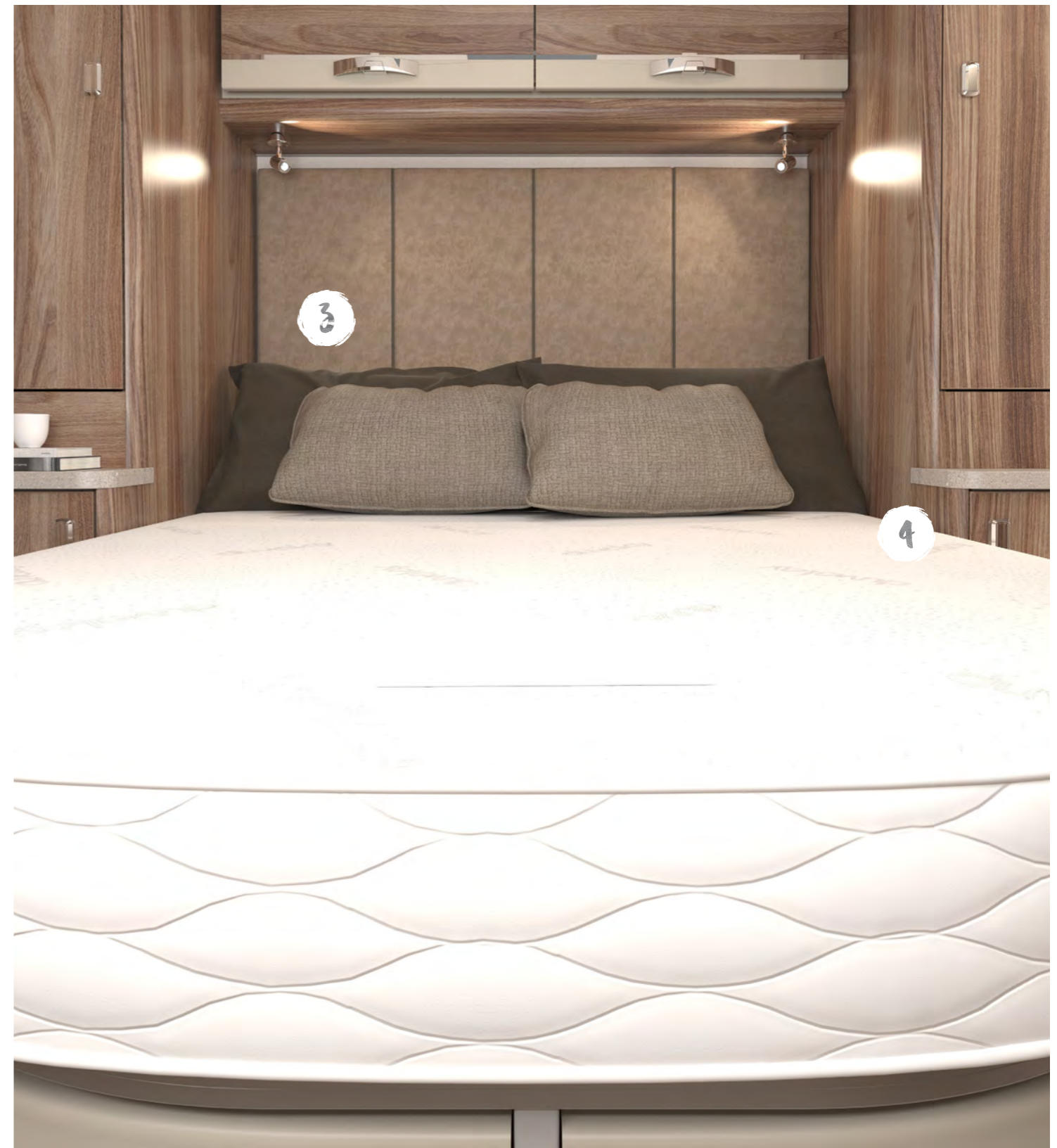
**3** Foldaway kitchen worktop extension for added workspace flexibility\*

**4** Dometic (Series 10) 98 litre undercounter fridge or 133 litre tall slimline fridge with removable freezer compartment

**5** Thetford thermostatic oven and grill with electric hotplate and 3 gas burners

**6** **NEW** adjustable under locker LED spotlights with USB points

\*Model specific



**1** Washroom and areas under beds and seats warmed by Alde perimeter radiators

**4** Exclusive Duvalay Duvalite Gravity Luxe mattress offering superior comfort and firm support (model specific)

**2** Dedicated washroom with shower console and durable shower tray

**5** Ecocamel Jetstorm shower head for a powerful shower that uses less water

**3** Full-height headboard on fixed beds

**6** Alde radiator central and water heating with LCD touchscreen control



Love  
Style



- 1 Panoramic front sunroof and triple flush fitting front window design
- 2 Streamlined aerodynamic profile with stylish exterior graphics
- 3 Stabiliser and shock absorbers for safer, smoother towing
- 4 Fixing bars for optional Thule rear-mounted cycle rack
- 5 Ample LED exterior lighting, including high-level marker, for better visibility
- 6 Hail-resistant exterior GRP roof with **NEW** 100W roof-mounted solar panel
- 7 Fully moulded, sweeping front GRP panel
- 8 Carbon effect easy access gas locker door with single lever three-point locking

# SMART CONSTRUCTION



**SMART is the basis of our intelligent construction system, used across our entire touring caravan range. Strong, Modern, Aerodynamic, Resilient and Tested, you can be assured your Swift caravan is a high quality engineered product.**



## STRONG

The Strong timberless body frame uses PURE, a tough, hard polyurethane based product that is totally impervious to water and has been proven through use.



## MODERN

The SMART construction system uses Modern materials, and has been developed to ensure the exterior profiles maintain the Modern, desirable looks our caravans are renowned for.



## AERODYNAMIC

We continue to lead the way in Aerodynamics, using Computational Fluid Dynamics to help shape the bodysell for better fuel consumption and safer towing.



## RESILIENT

All fixings are made into the PURE material to a pre-defined depth. PURE is totally impervious to water and has no veins. This means there is no passage for water from the outer skin, making the caravan highly Resilient against moisture.



## TESTED

Extensive safety Testing at the Millbrook track, plus cold chamber Testing down to minus 15°C and beyond, puts prototypes through conditions most products will never have to experience in a lifetime; all part of the Swift ethos to deliver the best products to you.



## HAIL RESISTANT GRP ROOF

Woven GRP outer surface provides greater durability from the elements.



## GRP SIDEWALLS

Balanced panel side walls with GRP outer and inner skins. GRP is more impact resistant than aluminium and can be easily repaired, ensuring long lasting good looks and helping protect your investment for the future.



'SMART' GRP sidewall during the production process.



## FLOOR CONSTRUCTION

'Sandwich' floor construction with ply upper, high rigidity Styrofoam core and GRP outer skin to provide greater durability from the elements.



## EXTERIOR & CONSTRUCTION

- European Whole Vehicle Type Approval ensures compliance with strict weight, dimension and safety regulations
- AL-KO galvanised steel chassis with Euro-axle
- EN1645 Grade 3 classification for heating and thermal insulation confirmed by cold chamber testing
- SMART construction with GRP body panels:
  - Strong, moisture proof 'PURE' polyurethane timber-less framed bodyshell with polystyrene insulation core (25mm in sidewalls, 32mm in roof)
  - Robust balanced panel side walls with GRP outer and inner skin
  - 44mm 'sandwich' floor construction with GRP outer skin, ply upper and high rigidity Ravatherm core
  - Hail resistant exterior GRP roof, fully bonded for extra strength and flatness
  - Sweeping front panel in GRP with triple flush fitting opening windows and exclusive LED front marker lights
- Full height GRP rear panel
- Streamlined aerodynamic profile
- Stylish exterior graphics scheme
- Exclusive LED rear light clusters, LED high level marker and brake light which provide better visibility in poor weather
- LED side marker running lights
- LED awning light with key fob control
- Surface mounted impact resistant skirt system
- Edge alloy wheels
- Steel spare wheel
- High tyre rating - a load margin is included in the tyre specifications
- 13-pin Jaeger 12V car connector
- AL-KO Euro overrun device with two-way assisted handbrake
- AL-KO carabiner breakaway cable
- Shock absorbers for a smoother towing experience
- Step-on hitch cover for easy cleaning of front windows
- Chrome effect two part grab handles to front and rear
- **NEW** 100W roof mounted solar panel
- 230V mains socket
- Aerial point in battery box for portable satellite dish connection
- BBQ point and connector
- Exterior access battery box with mains electric inlet (battery not included)
- External service doors - access under nearside front bed and fixed beds (model specific)
- Carbon effect easy access gas locker door with single lever three point locking
- Bulkhead mounted regulator suitable for use with either propane or butane bottles
- Fully double-glazed opening windows
- Screen printed windows with graphite grey tint
- Semi-recessed body colour awning rail on both sides
- Fixing bars for optional Thule rear mounted cycle rack (Elite G2)
- Exterior one-piece door with magnetic stay, interior moulded liner, chrome handle, window with blind, and bin with dust pan and brush
- Entrance step

## LIVING, RELAXING & SLEEPING

- 1.95m (6'5") headroom
- Coyote soft furnishing scheme
- Aralie Sen woodgrain upper locker doors with Oyster Grey panel and chrome detailing
- French Oak effect, high impact, scratch resistant floor lino
- Larger retained embroidered entrance mat
- Panoramic front sunroof incorporating fully integrated curved blind system, recessed lighting and speakers
- Curtains to all windows (except washroom and bunk bed areas - model specific)
- Twin curtain track for improved hanging and ease of use
- Sectioned removable and bleachable carpets for flexibility
- Two large scatter cushions
- Swift AirWave cushioning for greater seating and sleeping comfort, and maintains shape
- Seat and backrest ventilation boards
- Beech slat seat and bed bases for extra comfort with sprung hinged tops for easy access
- Bed make-up system with slats retained on track (mid bed uses the table)
- Exclusive Duvalay Duvalite Gravity Luxe mattress offering superior comfort and firm support (model specific)
- Fixed beds with aluminium bed frames to maximise strength and storage space (model specific)
- Full height headboards to fixed beds
- Midi-Heki rooflight with flyscreen and adjustable concertina blind in lounge
- Mini-Heki rooflights with flyscreens and adjustable concertina blinds in kitchens and bedrooms (model specific)
- Door flyscreen with easy concertina action
- Pleated blinds and flyscreens to all windows

## COOKING & EATING

- Thetford thermostatic oven and grill with three-burner gas hob and one electric hot plate, all with electronic ignition. Hob features a glass lid with auto gas shut-off functionality
- Ventilated microwave oven with digital controls
- Dometic (Series 10) 98 litre under counter fridge with electronic ignition incorporating 12 litre removable freezer compartment (530, 560 & 580)
- Dual hinged Dometic (Series 10) 133 litre tall slimline fridge with electronic ignition incorporating 12 litre removable freezer compartment (480 & 650)
- Foldaway kitchen worktop extension (model specific)
- Removable drainer and food grade nylon chopping board nestle together for easy storage in dedicated location
- Kitchen acrylic splashback
- Beige stone effect worktop
- Durable stainless steel kitchen sink
- Chrome effect swivel spout kitchen tap
- Two pull-out wire baskets in kitchen cupboard
- Two cutlery drawers on smooth-action steel runners (model specific)
- Chrome finish crockery rack
- Freestanding table

## WASHING

- Dedicated washroom incorporating shower console and durable shower tray
- Shower bi-fold door retained on track for improved access (480, 530, & 580)
- One piece 'Vellamo' shower cubicle with curved sliding door (560, & 650)
- Ecocamel Jetstorm showerhead with on/off button for a powerful shower that uses less water
- Chrome effect swivel spout vanity tap
- Thetford toilet with electric flush and 18 litre wheeled waste tank
- Micro-Heki rooflight in washroom
- 31 mm thick washroom door with domestic style lock and handle

## STORAGE

- Useful front chest featuring a soft close drawer with concealed drawer inside and convenient slide-out extending top
- Overhead locker doors with injection moulded spaceframe construction
- Positive overhead locker catches for secure storage on the move with chrome handles
- Upper front corner opening lockers for extra storage
- Seat bases featuring spaceframe construction with full front access and space for larger items

## UTILITIES

- User-friendly 12V control panel with battery selection, battery state, lighting control and water pump circuit control
- Alde radiator central heating and water heating with daily programming with LCD touchscreen control and choice of 1kW, 2kW or 3kW setting
- Digital programmable controller for heating and hot water
- Areas under beds and seats, and washroom areas warmed by Alde perimeter radiators
- High flow rate onboard pump with chrome effect taps for reliable, high performance water supply
- Onboard semi-rigid fresh water pipes
- Large bore underslung rigid waste pipes
- Isolation taps for gas appliances
- Fully protected mains electric system
- 25 metre mains hook-up cable
- 25 amp switchmode charger/transformer
- Low energy LED lighting throughout interior including:
  - Downlights in lounge
  - Over locker lighting
  - **NEW** adjustable under locker LED spotlights with USB points
  - Illuminated pelmets above side windows
  - Downlights set in plinth over kitchen locker
  - Strip lights above wardrobes
- A minimum of four 230V sockets throughout with twin USB points for easy charging of portable devices
- Stylish front binnacle design incorporating dedicated chrome effect socket surrounds
- Chrome effect socket and switch surrounds
- Branded AM/FM Radio with USB connectivity and auxiliary input
- Status 570 directional digital / analogue TV/ FM aerial and booster
- TV point with 230V, 12V and aerial sockets (two in selected models)

## SAFETY & SECURITY

- Convenient one-key high security locks
- Dead lock facility on entrance door for added security
- VIN CHIP™ identification system concealed within construction to deter theft and aid quick recovery
- CRiS identity number labels on windows and caravan chassis
- Passive infra-red alarm system with tilt sensor and key fob operation
- AKS 3004 stabiliser
- Receiver for optional AL-KO Secure wheel lock
- Smoke alarm
- Carbon monoxide alarm

## CUSTOMER SERVICE

- 10 year manufacturer-backed bodyshell warranty

## OPTIONS

### Factory Fit

- Alternative fabric scheme (Zinc based on Conqueror)
- AL-KO ATC trailer stability control

### Dealer Fit

- AL-KO Secure wheel lock
- Wrap-around front seating in addition to drawer chest
- Weight plate upgrade (model dependent)
- Roof mounted air conditioning unit (model dependent)
- Yuasa YBX Active Leisure & Marine L36 battery
- Thule rail mounted rear cycle rack - Elite G2

## CHALLENGER X DIFFERENCES

- Easy Accuride bed makeup system on front beds with beech slat seat and bed bases with fully opening hinged tops for extra comfort and easy access
- Decorative 'Ocean Drive' wall covering (850)
- Shower bi-fold door retained on track for improved access (880)
- One piece 'Vellamo' shower cubicle with curved sliding door (835, 850, 860)
- Mini-Heki rooflight in washroom (835, 850 & 860)
- Dometic (Series 10) 98 litre under counter fridge with electronic ignition incorporating 12 litre removable freezer compartment (860 & 880)
- Dual hinged Dometic (Series 10) 133 litre tall slimline fridge with electronic ignition incorporating 12 litre removable freezer compartment (835 & 850)

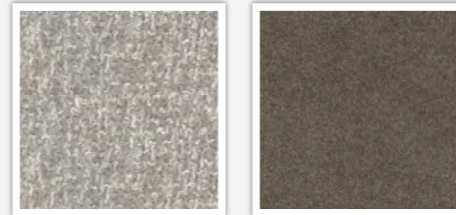


# FABRIC OPTIONS

Within the Challenger range there are two fabric options available; the **Coyote** scheme that comes as standard or the optional **Zinc** soft furnishing scheme (based on Conqueror - see below). Please ask your dealer for full details.

## SEATING

### COYOTE



### ZINC (OPTIONAL)

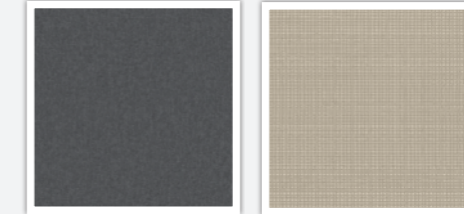


## CUSHIONS

### COYOTE



### ZINC (OPTIONAL)

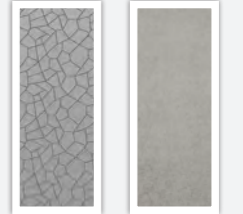


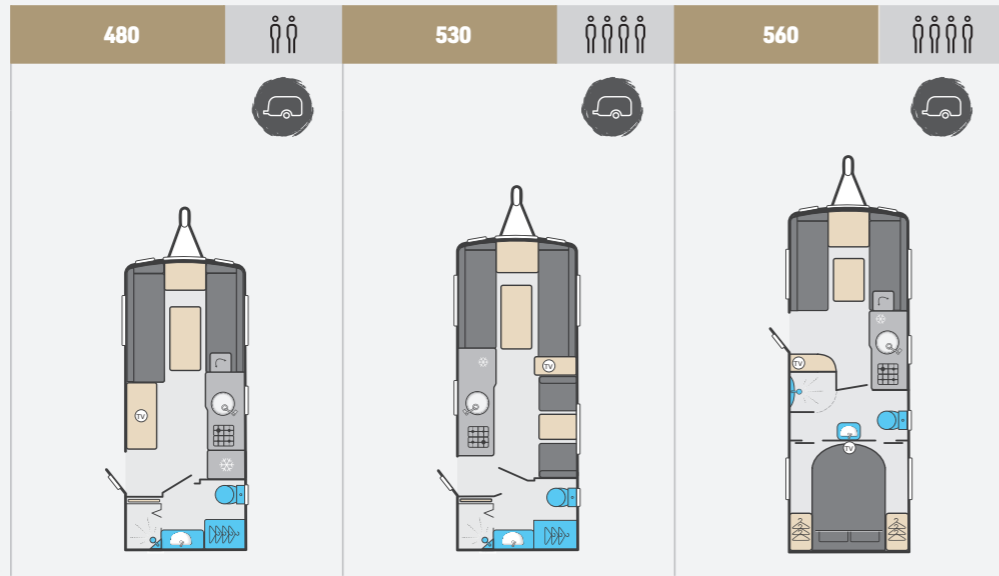
## CURTAINS

### COYOTE

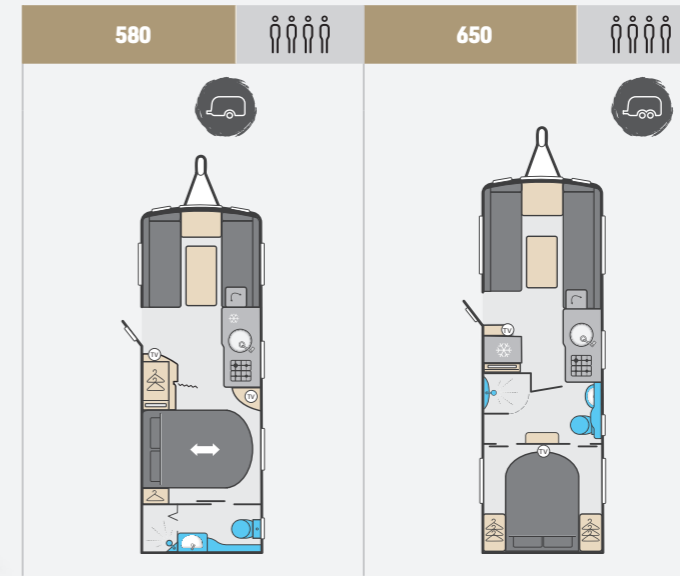


### ZINC (OPTIONAL)





	480	530	560
Berths	2	4	4
Number of axles	1	1	1
Internal length (at bed box height)	4.95m / 16'3"	5.29m / 17'4"	5.83m / 19'2"
Overall width*	2.23m / 7'4"	2.23m / 7'4"	2.23m / 7'4"
Overall height (inc. TV Aerial)*	2.61m / 8'7"	2.61m / 8'7"	2.61m / 8'7"
Maximum internal headroom	1.95m / 6'5"	1.95m / 6'5"	1.95m / 6'5"
Overall length*	6.66m / 21'10"	7.00m / 23'0"	7.54m / 24'9"
Awning A / A dimension	9.32m / 30'7"	10.20m / 33'6"	10.20m / 33'6"
Mass in Running Order (inc. tolerance)	1267kg / 24.9cwt	1330kg / 26.2cwt	1394kg / 27.4cwt
Maximum Technical Permissible Laden Mass	1394kg / 27.4cwt	1481kg / 29.2cwt	1550kg / 30.5cwt
Total user payload	127kg / 2.5cwt	151kg / 3.0cwt	156kg / 3.1cwt
Personal effects payload	127kg / 2.5cwt	151kg / 3.0cwt	156kg / 3.1cwt
Factory fit options	0.0kg / 0.0cwt	0.0kg / 0.0cwt	0.0kg / 0.0cwt
Tyre size	185 R14C 102Q	185 R14C 102Q	185 R14C 102Q
Thermal insulation grade	THREE	THREE	THREE
<b>BED SIZES</b>			
Front double	202cm x 186cm / 6'8" x 6'1"	202cm x 176cm / 6'8" x 5'9"	202cm x 156cm / 6'8" x 5'1"
or front nearside single	196cm x 72cm / 6'4" x 2'4"	176cm x 72cm / 5'9" x 2'4"	156cm x 72cm / 5'1" x 2'4"
and front offside single	186cm x 72cm / 6'1" x 2'4"	186cm x 72cm / 6'1" x 2'4"	156cm x 72cm / 5'1" x 2'4"
Rear double			190cm x 133cm / 6'3" x 4'4"
Side single (offside)		180cm x 62cm / 5'11" x 2'0"	
Side bunk (offside)		176cm x 59cm / 5'9" x 1'11"	



	580	650
Berths	4	4
Number of axles	1	2
Internal length (at bed box height)	5.83m / 19'2"	6.27m / 20'7"
Overall width*	2.23m / 7'4"	2.23m / 7'4"
Overall height (inc. TV Aerial)*	2.61m / 8'7"	2.61m / 8'7"
Maximum internal headroom	1.95m / 6'5"	1.95m / 6'5"
Overall length*	7.54m / 24'9"	7.98m / 26'2"
Awning A / A dimension	10.20m / 33'6"	10.52m / 34'6"
Mass in Running Order (inc. tolerance)	1367kg / 26.9cwt	1549kg / 30.5cwt
Maximum Technical Permissible Laden Mass	1523kg / 30.0cwt	1709kg / 33.6cwt
Total user payload	156kg / 3.1cwt	160kg / 3.1cwt
Personal effects payload	156kg / 3.1cwt	160kg / 3.1cwt
Factory fit options	0.0kg / 0.0cwt	0.0kg / 0.0cwt
Tyre size	185 R14C 102Q	185 / 70 R14 88T
Thermal insulation grade	THREE	THREE
<b>BED SIZES</b>		
Front double	202cm x 156cm / 6'8" x 5'1"	202cm x 156cm / 6'8" x 5'1"
or front nearside single	156cm x 72cm / 5'1" x 2'4"	156cm x 72cm / 5'1" x 2'4"
and front offside single	156cm x 72cm / 5'1" x 2'4"	156cm x 72cm / 5'1" x 2'4"
Rear double	185cm x 133cm / 6'1" x 4'4"	185cm x 133cm / 6'1" x 4'4"
Side single (offside)		
Side bunk (offside)		

**MASSSES:** The masses are calculated in accordance with EU regulation 1230 / 2012 and NCC code of practice 304.

The Mass in Running Order (MRO) comprises:

1. The mass of the empty caravan as supplied by Swift including loose items such as the hook-up cable, kit bag, entrance step, manuals etc.
2. 10kg allowance for LPG

The MRO is calculated with the fresh water tank, toilet flush tank and water heater empty. If you travel with water in the fresh water tank, toilet flush tank and the water heater the payload will reduce accordingly.

The personal effects is based on the number of berths and the length of the caravan, and includes an allowance of 20kg for a leisure battery.

The Maximum Technical Laden Mass (MTPLM) is the maximum mass allowed when the caravan is fully laden.

**WARNING:** Under no circumstances should the MTPLM be exceeded.

**BED SIZES:** Please note that the front double bed sizes quoted are for seating configurations without chest of drawers. The front double bed width for a layout with a chest of drawers fitted will be reduced by 0.4m (1'4") from that stated.

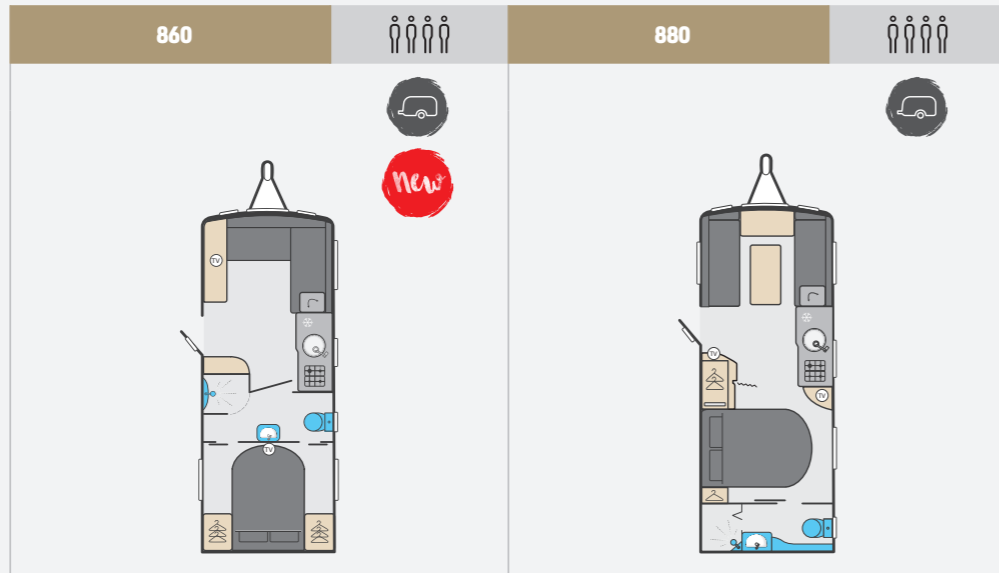
**AWNING SIZES:** Due to the varying awning designs and sizes the awning sizes given are approximate only. Specific awning sizes must be confirmed by your dealer or the awning manufacturer prior to purchase.

# The dimensions given are approximate due to slight variations in suspension ride heights, loading conditions and tyre pressures. Customers should verify the actual dimensions of their touring caravan before committing to anything that could be impacted by these dimensions.

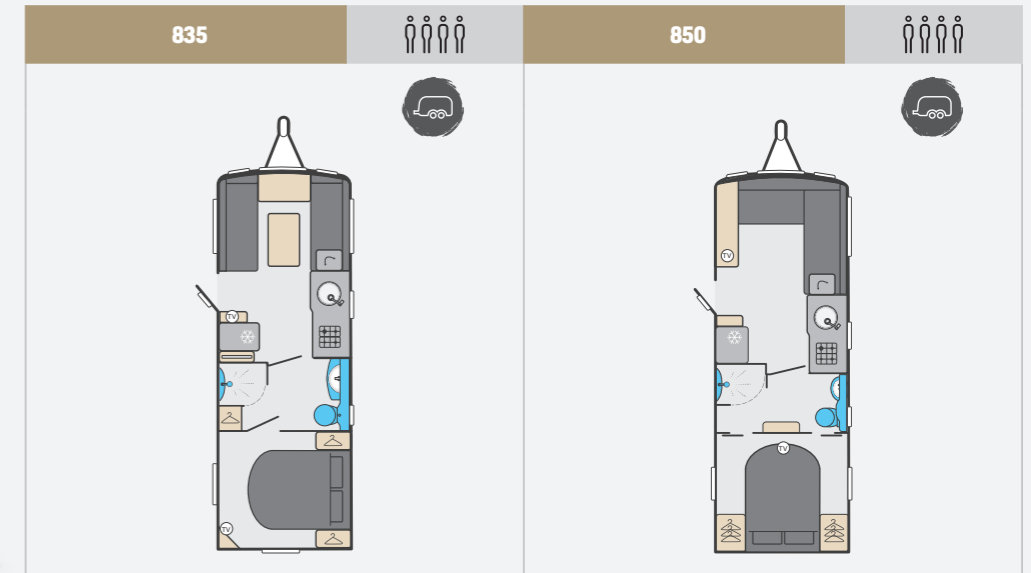
Please note: Any dealer fit options will reduce the overall payload available to the user of the caravan. If you require additional payload it is possible to

upgrade the MTPLM to the upper limit. Please contact your caravan dealer for more information.

**LED ROAD LIGHTS:** Certain vehicles may require a secondary fuse box when towing models fitted with LED road lighting.



	860	880
Berths	4	4
Number of axles	1	1
Internal length (at bed box height)	5.83m / 19'2"	5.83m / 19'2"
Overall width*	2.45m / 8'0"	2.45m / 8'0"
Overall height (inc. TV Aerial)*	2.61m / 8'7"	2.61m / 8'7"
Maximum internal headroom	1.95m / 6'5"	1.95m / 6'5"
Overall length*	7.54m / 24'9"	7.54m / 24'9"
Awning A / A dimension	10.20m / 33'6"	10.20m / 33'6"
Mass in Running Order (inc. tolerance)	1504kg / 29.6cwt Est	1460kg / 28.7cwt
Maximum Technical Permissible Laden Mass	1660kg / 32.7cwt Est	1616kg / 31.8cwt
Total user payload	156kg / 3.1cwt	156kg / 3.1cwt
Personal effects payload	156kg / 3.1cwt	156kg / 3.1cwt
Factory fit options	0.0kg / 0.0cwt	0.0kg / 0.0cwt
Tyre size	195 / 70 R15C 104 R	195 / 70 R15C 104 R
Thermal insulation grade	THREE	THREE
<b>BED SIZES</b>		
Front double	197cm x 127cm / 6'6" x 4'2"	225cm x 159cm / 7'4" x 5'3"
Or front nearside single and front offside single	159cm x 73cm / 5'3" x 2'5"	159cm x 73cm / 5'3" x 2'5"
Rear double	187cm x 143cm / 6'2" x 4'8"	187cm x 133cm / 6'2" x 4'4"



	835	850
Berths	4	4
Number of axles	2	2
Internal length (at bed box height)	6.27m / 20'7"	6.27m / 20'7"
Overall width*	2.45m / 8'0"	2.45m / 8'0"
Overall height (inc. TV Aerial)*	2.59m / 8'6"	2.59m / 8'6"
Maximum internal headroom	1.95m / 6'5"	1.95m / 6'5"
Overall length*	7.98m / 26'2"	7.98m / 26'2"
Awning A / A dimension	10.52m / 34'6"	10.52m / 34'6"
Mass in Running Order (inc. tolerance)	1621kg / 31.9cwt	1639kg / 32.3cwt
Maximum Technical Permissible Laden Mass	1781kg / 35.1cwt	1799kg / 35.4cwt
Total user payload	160kg / 3.1cwt	160kg / 3.1cwt
Personal effects payload	160kg / 3.1cwt	160kg / 3.1cwt
Factory fit options	0.0kg / 0.0cwt	0.0kg / 0.0cwt
Tyre size	185 / 70 R14 88 T	185 / 70 R14 88 T
Thermal insulation grade	THREE	THREE
<b>BED SIZES</b>		
Front double	225cm x 159cm / 7'4" x 5'3"	197cm x 127cm / 6'6" x 4'2"
Or front nearside single and front offside single	159cm x 73cm / 5'3" x 2'5"	159cm x 73cm / 5'3" x 2'5"
Rear double	187cm x 133cm / 6'2" x 4'4"	187cm x 143cm / 6'2" x 4'8"

**MASSSES:** The masses are calculated in accordance with EU regulation 1230 / 2012 and NCC code of practice 304.

The Mass in Running Order (MRO) comprises:

1. The mass of the empty caravan as supplied by Swift including loose items such as the hook-up cable, kit bag, entrance step, manuals etc.
2. 10kg allowance for LPG

The MRO is calculated with the fresh water tank, toilet flush tank and water heater empty. If you travel with water in the fresh water tank, toilet flush tank and the water heater the payload will reduce accordingly.

The personal effects is based on the number of berths and the length of the caravan, and includes an allowance of 20kg for a leisure battery.

The Maximum Technical Laden Mass (MTPLM) is the maximum mass allowed when the caravan is fully laden.

**WARNING:** Under no circumstances should the MTPLM be exceeded.

**BED SIZES:** Please note that the front double bed sizes quoted are for seating configurations without chest of drawers. The front double bed width for a layout with a chest of drawers fitted will be reduced by 0.4m (1'4") from that stated.

**AWNING SIZES:** Due to the varying awning designs and sizes the awning sizes given are approximate only. Specific awning sizes must be confirmed by your dealer or the awning manufacturer prior to purchase.

# The dimensions given are approximate due to slight variations in suspension ride heights, loading conditions and tyre pressures. Customers should verify the actual dimensions of their touring caravan before committing to anything that could be impacted by these dimensions.

Please note: Any dealer fit options will reduce the overall payload available to the user of the caravan. If you require additional payload it is possible to

upgrade the MTPLM to the upper limit. Please contact your caravan dealer for more information.

**LED ROAD LIGHTS:** Certain vehicles may require a secondary fuse box when towing models fitted with LED road lighting.

Est = Estimated

## ENGLAND - NORTH WEST

01. Bardsea Leisure, Ulverston  
bardsealeisure.co.uk
02. Lancaster Motorhomes and Caravans, Carnforth  
lancastermotorhomesandcaravans.co.uk
03. Leisure Sales, Sandbach  
leisuresales.co.uk
04. Preston Caravans & Motorhomes, Preston  
prestoncm.co.uk
05. North Western Caravans, Cheadle Hulme  
northwesterncaravans.co.uk
06. Stewart Longton Caravans Ltd, Chorley  
stewartlongton.co.uk

## ENGLAND - NORTH EAST

07. Kimberley Caravans, Darlington  
kimberleycaravans.co.uk
08. Teesside Caravans, Thornaby  
teessidecaravans.co.uk
09. Tyneside Leisure World, Birtley  
leisureworldgroup.com
10. United British Caravans, Newcastle upon Tyne  
unitedbritishcaravans.co.uk

## ENGLAND - YORKSHIRE

11. Wandahome South Cave Ltd  
caravanbuys.com
12. Yorkshire Coast Caravans, Bridlington  
yorkshirecoastcaravans.co.uk
13. Catterick Caravans, Richmond  
leisureworldgroup.com
14. Ebor Leisure World, York  
leisureworldgroup.com
15. Sheffield Caravans, Swallownest  
qualitycaravans.com
16. Yorkshire Caravans Of Bawtry  
yorkshirecaravans.com
17. Lowdhams Leisure World, Huddersfield  
lowdhams.com

## ENGLAND - WEST MIDLANDS

18. Salop Leisure Ltd, Shrewsbury  
salopleisure.co.uk
19. Spinney, Silverdale  
spinney.co.uk

20. Broad Lane Leisure, Alcester  
broadlane.co.uk
21. Broad Lane Leisure, Kenilworth  
broadlane.co.uk

22. Black Country Caravans  
blackcountrycaravans.co.uk

## ENGLAND - EAST MIDLANDS

23. Glossop Caravans  
glossopcaravans.co.uk
24. Robinsons Caravans  
robinsonscaravans.co.uk
25. Ryedale Caravan & Leisure Ltd, Shepshed  
ryedaleleisure.com
26. Brayford Leisure, Lincoln  
brayford-caravans.co.uk
27. Couplands Caravans, Louth  
couplandscaravans.co.uk
28. Grantham Caravans, Grantham  
granthamcaravans.co.uk
29. Torksey Caravans, Lincoln  
qualitycaravans.com

30. White Arches Caravans, Rushden  
white-arches.co.uk

31. Lowdhams Leisure World, Gunthorpe  
lowdhams.com

## ENGLAND - SOUTH WEST

32. Davan Caravans Ltd, Weston-Super-Mare  
davan.co.uk
33. Tamar Caravans, Plymouth  
tamartowing.co.uk
34. Forest Of Dean Caravans, Lydney  
forestofdeancaravans.co.uk
35. Golden Castle Caravans Ltd, Churchdown  
goldencastle.co.uk
36. Highbridge Caravan Centre, Highbridge  
highbridgearavans.co.uk
37. Swindon Caravan Centre, Wootton Bassett  
swindoncaravansgroup.com
38. Tilshead Caravans, Salisbury  
tilshead-caravans.com
39. Winchester Caravans, Winchester  
winchestercaravans.com

## ENGLAND - SOUTH EAST

40. Pioneer Caravans, Peterborough  
pioneercaravans.co.uk
41. Homestead Caravan Centre, Weeley  
homesteadcaravans.co.uk
42. MG Caravans, Royston  
mgcaravans.com
43. Norwich Caravans  
norwich-caravans.co.uk
44. Greentrees Caravan Store  
greentrees-caravanstore.co.uk
45. Bicester Caravans & Leisure  
bicestercaravanandleisure.co.uk
46. Oxford Caravan Centre  
swindoncaravansgroup.com
47. Caravan Tech  
caravantech.co.uk
48. Chichester Caravans, Nutbourne  
chichestercaravans.co.uk
49. Winchester Caravans  
chichestercaravans.co.uk

## SCOTLAND

50. Dee Valley Caravans, Drumoak  
deevalleycaravans.co.uk
51. Burnhouse Caravans, Beith  
halleycaravans.co.uk
52. Dumfries Caravans Centre  
dumfriescaravans.com
53. Kirkcaldy Caravans  
kirkcaldycaravans.com
54. S & D Harper Ltd, Elgin  
sdharper.co.uk
55. Gnr Sutherland Caravan Sales, Tain  
sutherlandcaravans.co.uk
56. Duncans Caravans, Wishaw  
duncancaravans.co.uk
57. Perthshire Caravans, Perth  
perthshire-caravans.co.uk
58. Knowepark Caravans, Livingston  
kpcm.co.uk

## WALES

59. 3 As Caravan Co, Carmarthen  
3acaravans.co.uk
60. Spinney Flintshire, Deeside  
spinney.co.uk
61. Threeways, Abergele  
threewaysmotorhomes.net

## NORTHERN IRELAND

62. LPC Leisure Ltd, Bangor  
lpccaravans.co.uk
63. Cookstown Caravans Ltd  
cookstowncaravans.com





**SWIFT**  
CREATING SMILES FOR LIFE

VIEW & DOWNLOAD  
YOUR COMPLETE RANGE  
OF SWIFT BROCHURES HERE  
[swiftgroup.co.uk/downloads](https://swiftgroup.co.uk/downloads)

OR SCAN THE QR CODE



SCAN FOR MORE

[swiftgroup.co.uk](https://swiftgroup.co.uk)

## DISCLAIMER

This brochure does not constitute an offer by Swift Group Limited (Swift). Swift reserves the right to alter specifications and prices at any time as materials and conditions demand. Distributors and dealers sell Swift products on their own account and not as agents of Swift. Accordingly, they have no authority to bind Swift or to make any representation or undertaking whatsoever on behalf of Swift. All props are for photographic purposes only and are not included in the specification. Models shown may be fitted with optional extras. Issued September 2021.

CARAVANS • MOTORHOMES • HOLIDAY HOMES - MADE IN BRITAIN BY SWIFT

